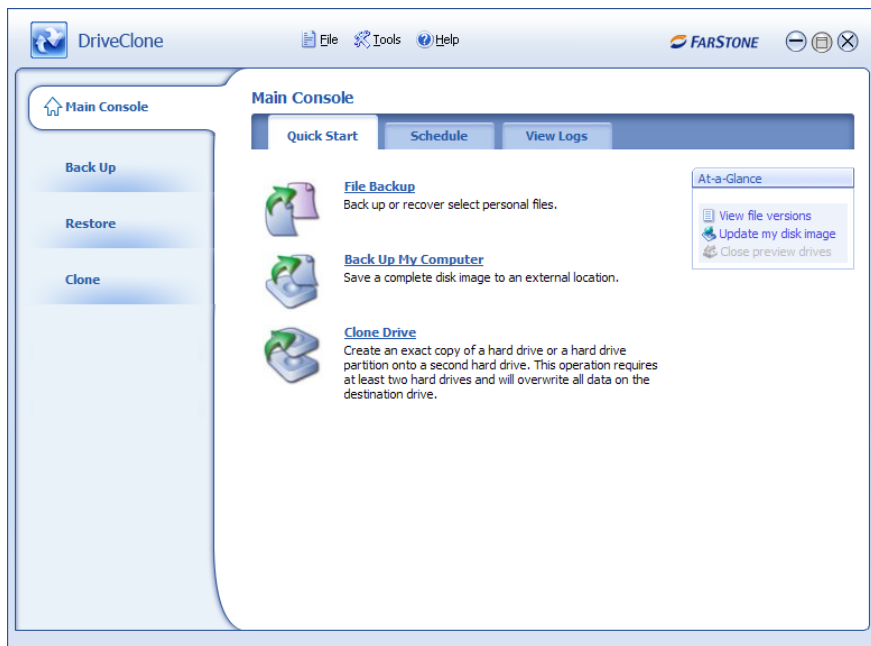


DriveClone Pro 5



DriveClone Pro 5 supports IDE, SATA, SCSI, and USB hard drives and hardware RAID. Partition support includes FAT 16, FAT 32, NTFS, Linux, ext2, ext 3, Reiser, and other unknown partitions.

DriveClone Pro 5 is the only solution that offers three different types of backup: System Snapshot, Complete Backup, and File Backup

System Snapshot: Our fastest, most efficient backup. System Snapshot backs up the computer in a mere 5-10 seconds, and restores it within 1 minute.

Complete Backup: Our most comprehensive backup. Back up your entire computer, including your operating system, programs, documents, music, photos, everything. Your hard drive is saved as a compressed image file, saving hard drive space.

File Backup: Back up only the files you want to back up! Choose specific files or folders and back them up incrementally, saving both time and space.

Pre-Windows Recovery: Even if your operating system fails, you can still restore your computer to a working state. DriveClone loads before the operating system, and allows you to restore your computer, regardless of operating system functionality.

FEATURES

- **System Snapshot:** Back up your computer in a mere 10 seconds, regardless of hard drive size! A 300GB and 120GB HD both take the same amount of time to back up.
- **Universal Restore:** Restore to dissimilar hardware, regardless of brand, size, or OS
- **Pre-Windows Recovery:** DriveClone works even when your operating system doesn't. Restore your computer when your OS fails.
- **File Level Backup:** Retrieve a lost file from an automatic record of saved versions
- **Flexible Backup:** Copy a single partition, multiple partitions, or an entire hard drive
- **Ease of Use:** Perform most imaging functions within a familiar Windowslike environment
- **Partition Support:** DriveClone supports FAT16, FAT32, NTFS, Linux and other unknown partitions
- **Incremental Updates:** Quickly update your saved disk image without ever leaving Windows.
- **Recovery CD Creation:** Create a recovery DVD. You can recover your computer by booting from the recovery disc.

SYSTEM REQUIREMENTS

- CPU: Intel Pentium 486 or higher
- RAM: 256 MB or more (1 GB for Vista)
- Hard Drive: 130 MB free space
- Operating System: Windows 2000, XP or Vista (64-bit or 32-bit systems)

DriveClone 5 Series Features list

Features		DriveClone Pro 5	DriveClone 5
Disaster Recovery			
Boot from	USB Disk / CD / DVD	✓	✓
Complete Backup			
Backup	Backup Level	Sector	Sector
	Hot Imaging (Live Backup)	✓	✓
	Clone Disk/Partition	✓	✓
	Incremental Backup	✓	✓
	Schedule Backup (Multiple Task/Project)	✓	✓
	Compression	✓	✓
	Password protection	✓	✓
	Image Integrity Check	✓	✓
	Create Recovery CD/DVD	✓	✓
Restore	Resize Partitions while Restoring	✓	✓
	Mount image to retrieve individual folder or files with Windows Explorer	✓	✓
	Restore non-system partition in Windows	✓	✓
	Recover system in Pre-OS	✓	✓
	Bare mental recovery (Disaster recovery) via Start-up disc, USB key, or Recovery CD/DVD	✓	✓
Advanced	Image Integrity check	✓	✓
	Create Start-up Disk	✓	✓
	Image Archive Splitting	✓	✓
	Universal Restore	✓	
File Backup			
Backup	Backup Level	File	File
	Backup your email, music, video, photo, etc.	✓	✓
	Backup selected files/folders	✓	✓
	Schedule Backup (Multiple Task/Project)	✓	✓
	Keep multiple version of each file in on Project	✓	✓
	Backup files to external Device, network or CD/DVD	✓	✓
Universal Rrstore	Restore/Migrate system to dissimilar hardware	✓	
System Snapshot			
Backup	Backup Level	Sector	Sector
	Create Snapshot manually or scheduled	✓	
	Instant system backup and store backup data to Secure Area (Virtual Partition)	✓	
Restore	Instantly undo changes to your system after virus or hacker attacks, etc.	✓	
	Restore Snapshot manually or scheduled	✓	
	Preview/Mount Snapshot before restoring	✓	