

DriveClone Server

Users' Manual

Contents

Chapter 1: Introduction.....	3
Chapter 2: Install and uninstall DriveClone Server.....	3
2.1 System Requirement	3
2.2 Installing DriveClone Server	4
2.3 Uninstalling DriveClone Server.....	5
Chapter 3: Start Using DriveClone Server	5
3.1 Main Console	6
3.2 One-Time Cloning	6
3.3 Multiple-Time Cloning/Mirror Drive.....	8
3.4 Advanced Settings	11
3.5 Clone/Convert to VM files.....	13
3.6 Logs	13
3.7 Fix PC Boot Problems	14
3.8 Cloned Drives	15
3.9 Help Menu.....	16
Chapter 4: Restore a UEFI-Based Computer.....	16
4.1 Introduction to UEFI.....	16
4.2 Set bootable hard drive for legacy UEFI computer	17

Chapter 1: Introduction

DriveClone Server is designed to completely copy all files, applications and Windows system from one Hard Drive/SSD/Flash to another Hard Drive/SSD/Flash. You can easily clone your Hard Drive/SSD/Flash to a different size SSD drive (smaller or bigger) for better performance. DriveClone Server will automatically adjust and resize partitions during cloning process to reduce the process complications.

For all our valuable customers, we provides a Free to use, buy when satisfied service model. This means that our 14 days trial version is a complete software with all its features available. Feel free to clone and upgrade your disks, just don't forget to purchase once you're satisfied with our product.

Chapter 2: Install and uninstall DriveClone Server

2.1 System Requirement

Desktop or notebook computer running

Windows® XP (32-bit & 64-bit)

Windows® Vista (32-bit & 64-bit)

Windows® 7 (32-bit & 64-bit)

Windows® 8 (32-bit & 64-bit)

Server computer running

Windows® Server 2003 (32-bit & 64-bit)

Windows® Server 2008 (32-bit & 64-bit)

Windows® Server 2012 (32-bit & 64-bit)

1GB or more RAM

2.2 Installing DriveClone Server

If you purchased a CD:

Insert the CD into your CD-ROM drive. The setup program should start automatically. If it doesn't, browse the CD and double-click on the **Setup.exe**. Follow the prompts displayed to finish installation.

If you purchased an electronic download:

Save the executable file to the hard drive. Double-click the file to launch DriveClone Server installer. Follow the prompts displayed to finish installation.



1. Double click **Setup**, the above interface will pop up. Then click **Next**.
2. Carefully read the software license agreement, once accepted, select **I Agree**.

3. Enter your User Name, Company Name and Serial Number, and then click **Next**.
4. Click **Install** to install to the default folder, or click **Browse** to select another location.
5. Click **Finish** to complete the installation.

2.3 Uninstalling DriveClone Server

1. From the Windows Start menu, select **Start -> Control Panel -> Programs**.
2. Double-click **Programs and Features**.
3. Select **DriveClone Server**, and click **Uninstall** to begin uninstalling the associated component.

Chapter 3: Start Using DriveClone Server

For individual users, there are two ways to begin the cloning process:

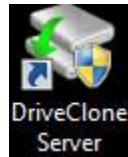
1. Clone through USB enclosure (adapt to laptop and desktop)

Put Hard Drive/SSD/Flash into the USB enclosure, and clone with **DriveClone Server**. Once finished, configure the cloned Hard Drive/SSD/Flash into the target computer.

2. Clone through connecting line (adapt to desktop)

Open computer case, use two connecting lines (IDE/SATA etc.) to connect external Hard Drive/SSD/Flash to the computer, and then clone with DriveClone Server. Once finished, configure the cloned Hard Drive/SSD/Flash into the target computer.

3.1 Main Console



Double click icon to start **DriveClone Server**.



3.2 One-Time Cloning

Clone Drive/Partition(s) duplicates one hard drive or SSD to another hard drive or SSD, and it is immediately bootable. It eliminates the need of re-installing the operating system, drivers and applications when upgrading to a new hard drive or SSD with only a few mouse clicks.



Tip

To use this function; you will need at least two hard drives on the computer.

The target hard drive should have enough space to store the data of source hard drive.

1. Click **One-Time Cloning**.
2. Select a Source Disk/Partition (top pane) and then a Destination Disk/Partition (bottom pane).

The screenshot shows the DriveClone 11 Server interface. The title bar reads "DriveClone™ 11 Server" and "Welcome WIN-8GLDMH1EKVR". The main window is titled "One-Time Cloning" and contains the following elements:

- Cloned Drive(s):** A sidebar on the left shows "None" under "Cloned Drive(s)".
- Step 1: Select a source disk or partition to clone:** A table with columns: Partition, Capacity, Used Size, Status, Type. The selected row is "Local Disk(C:)" with Capacity 40.00 GB, Used Size 15.60 GB, Status "System, Active", and Type "NTFS".
- Step 2: Select a destination disk or partition:** A table with columns: Partition, Capacity, Used Size, Status, Type. The selected row is "e(E:)" with Capacity 60.00 GB, Used Size 12.10 GB, Status "System, Active", and Type "NTFS".
- Buttons:** "Previous", "Next", and "Cancel" buttons are located at the bottom right.
- Checkbox:** "Keep hard drive ID (only for advanced users)" is located at the bottom left.
- Footer:** "Free FarStone Total Backup Recovery" logo and text are at the bottom left.

3. Click **Next** to continue, then following window will pop up:



4. Click **Yes** to continue.

5. Check **Rapid Cloning** or **Normal Cloning**, and click **Next**. Rapid cloning is much faster than normal cloning, but it will not perform perfect defragmentation and cannot clone to a smaller hard drive.

6. After confirming your selections, click **Start** to proceed or **Previous** to modify settings.

7. Click **Finish** to complete the cloning process.



Note

If the cloned target is a USB device, you need take the hard drive out from the capsule and insert into your target computer by IDE/SATA connection.

3.3 Multiple-Time Cloning/Mirror Drive

Mirror Drive allows you to run an incremental cloning of a mirrored drive and set file versions keeping rules.

Incremental Cloning: Check this function on your own needs to run an incremental cloning which would only take a few minutes.

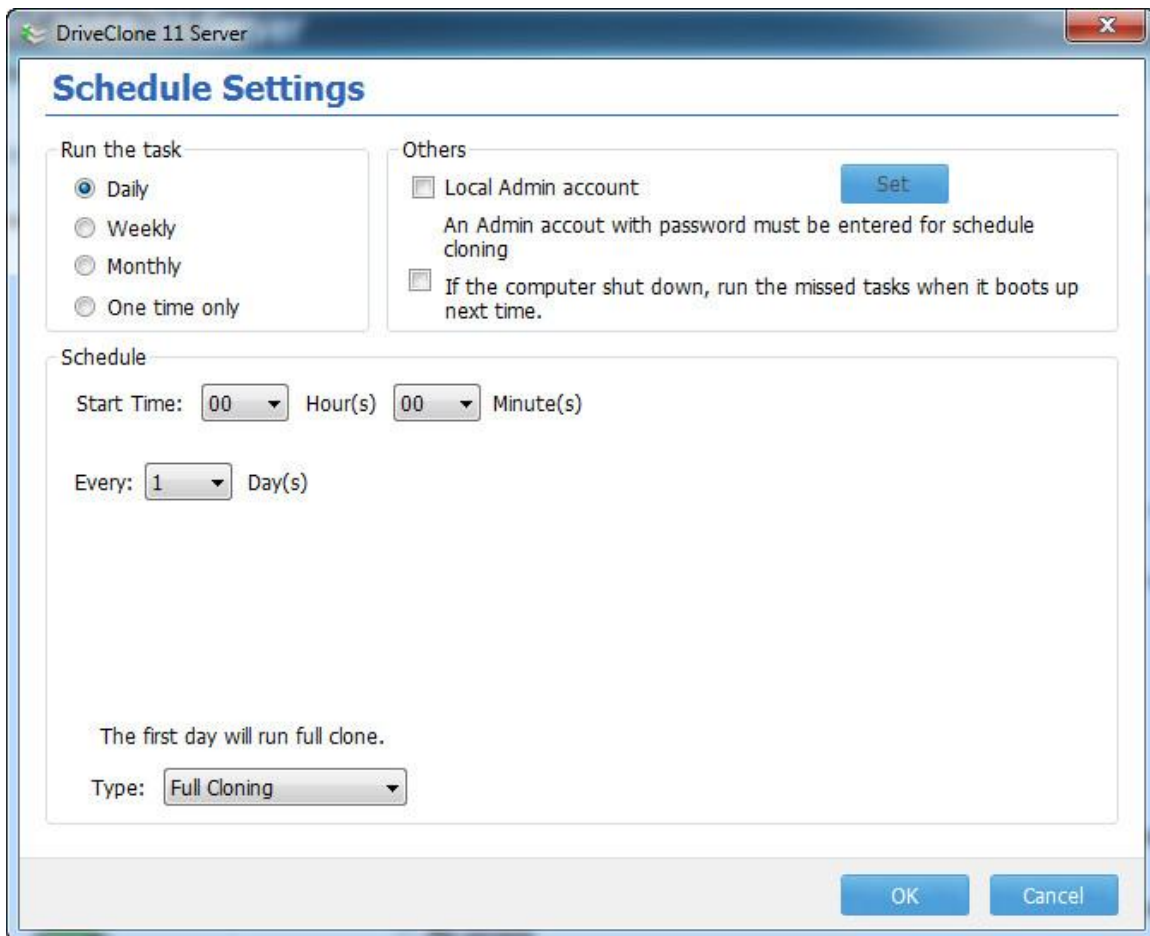
Save () File Versions: Choose to set copies of old files that you would like to save in a folder named "dcbkYYYY-MM-DD", this folder was created automatically once an incremental clone was executed to save old files.

Schedule Cloning: Check it to set an automatic cloning schedule. All scheduled cloning will perform incremental cloning.

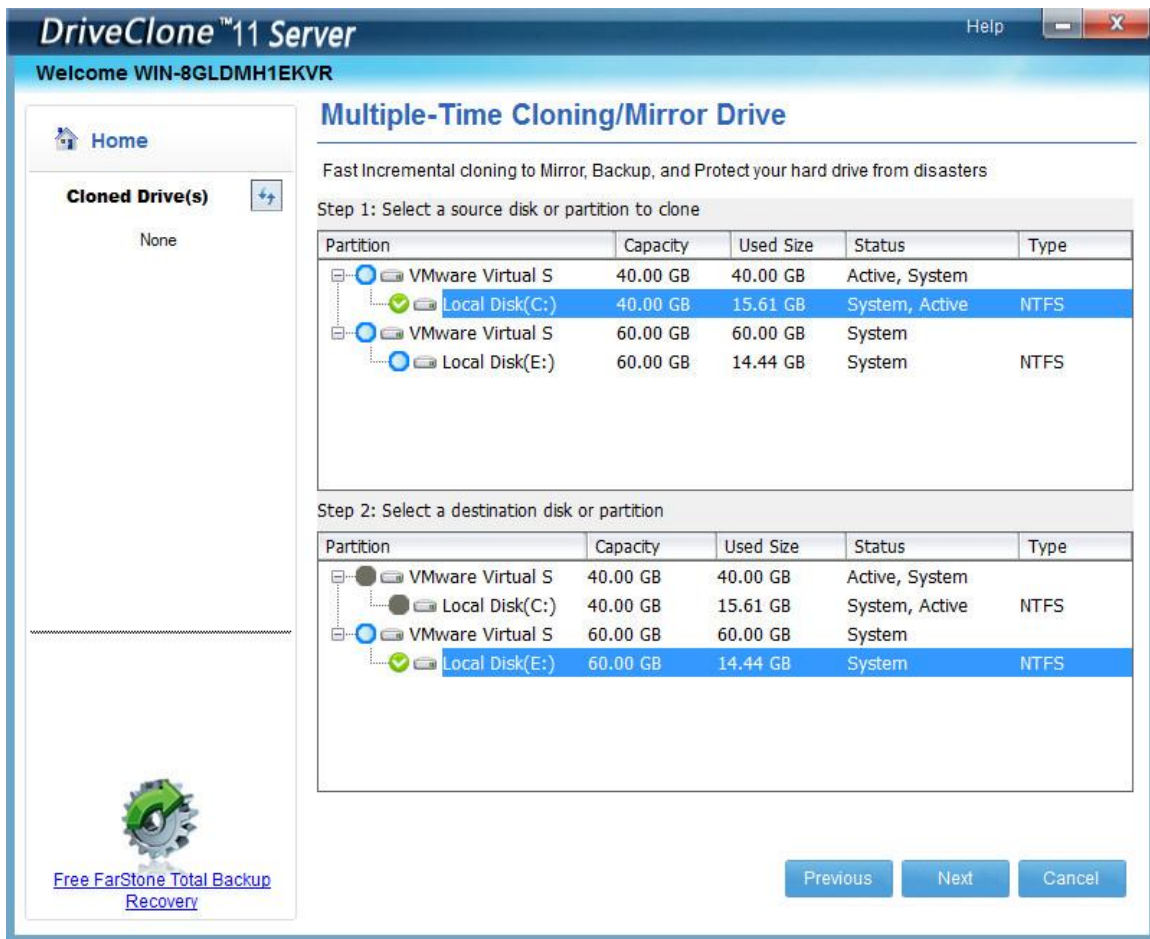
Keep () Versions of Legacy Files: Backup number of copies of old files that you would like to save to a folder named "#dcbkYYYY-MM-DD", this folder is created automatically once an scheduled cloning was performed.

Merge or delete all previous history versions when no available space for current file version: all previous history files will be deleted when there are no free space available.

1. After checking **Schedule Cloning**, below window will pop up after clicking **Next**.



2. Select a Source Disk/Partition (top pane) and then a Destination Disk/Partition (bottom pane).



3. Click **Next** to continue, then following window will pop up:



4. Click **Yes** to continue.

5. Check **Rapid Cloning** or **Normal Cloning**, and click **Next**. Rapid cloning is much faster than normal cloning, but it will not perform perfect defragmentation and cannot clone to a smaller hard drive.

6. After confirming your selections, click **Start** to proceed or **Previous** to modify settings.

7. Click **Finish** to complete the cloning process, and run an incremental cloning thereafter at **Cloned Drive(s)** column.

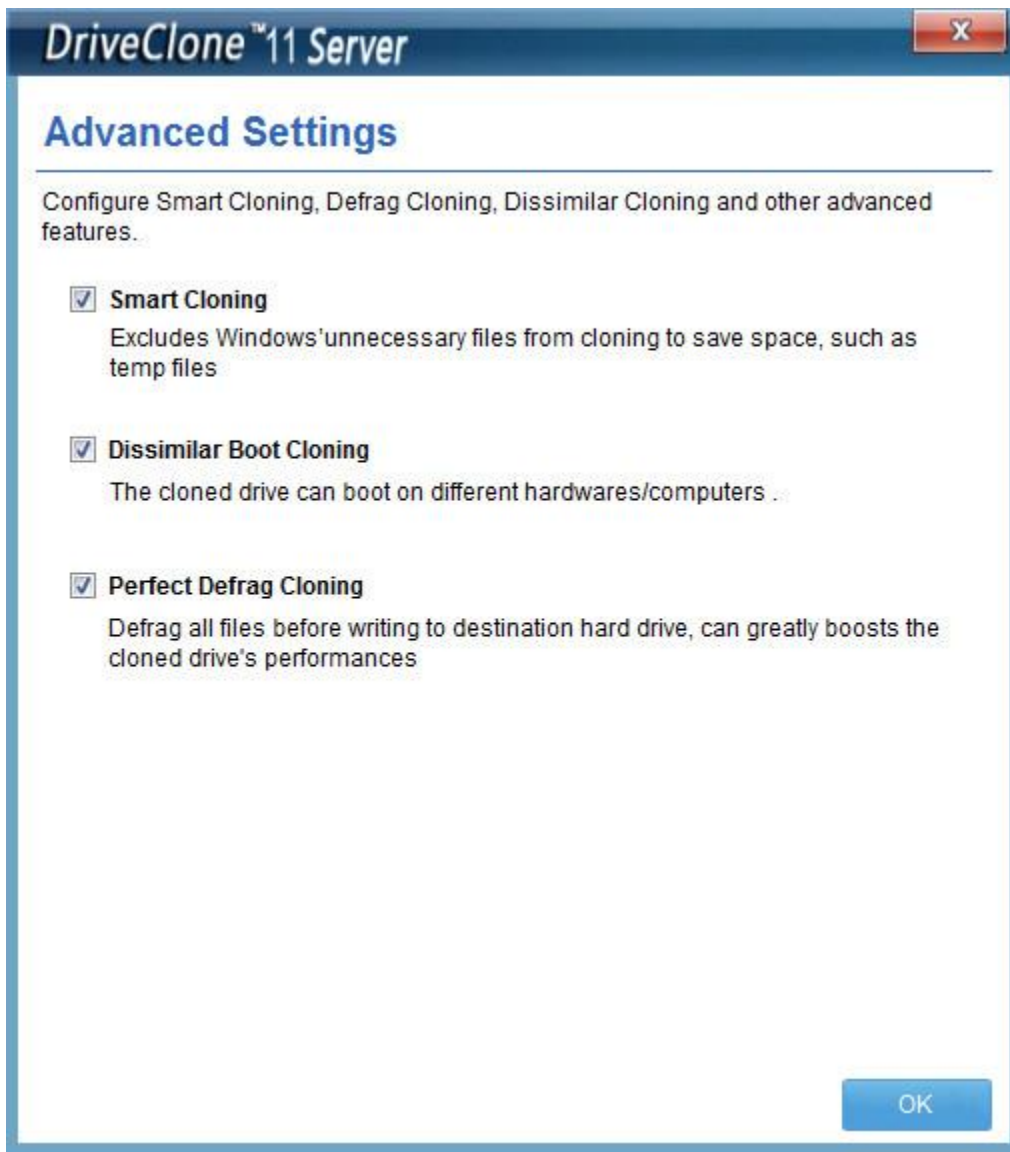


Note

If the cloned target is a USB device, you need take the hard drive out from the capsule and insert into your target computer by IDE/SATA connection.

3.4 Advanced Settings

You can configure smart cloning, defrag cloning and dissimilar cloning here.



Smart Cloning: With this function, redundant Windows data, such as browser's temporary file, Windows caching swapping files, Windows hibernation and temp files, etc., could be excluded during cloning for making cloning faster.

Dissimilar Boot Cloning: Choose to check it so that the cloned drive can be bootable on different computers.

Perfect Defrag Cloning: Defrag all files before cloning to the destination hard drive, boosts the cloned drive's performance 20% faster.

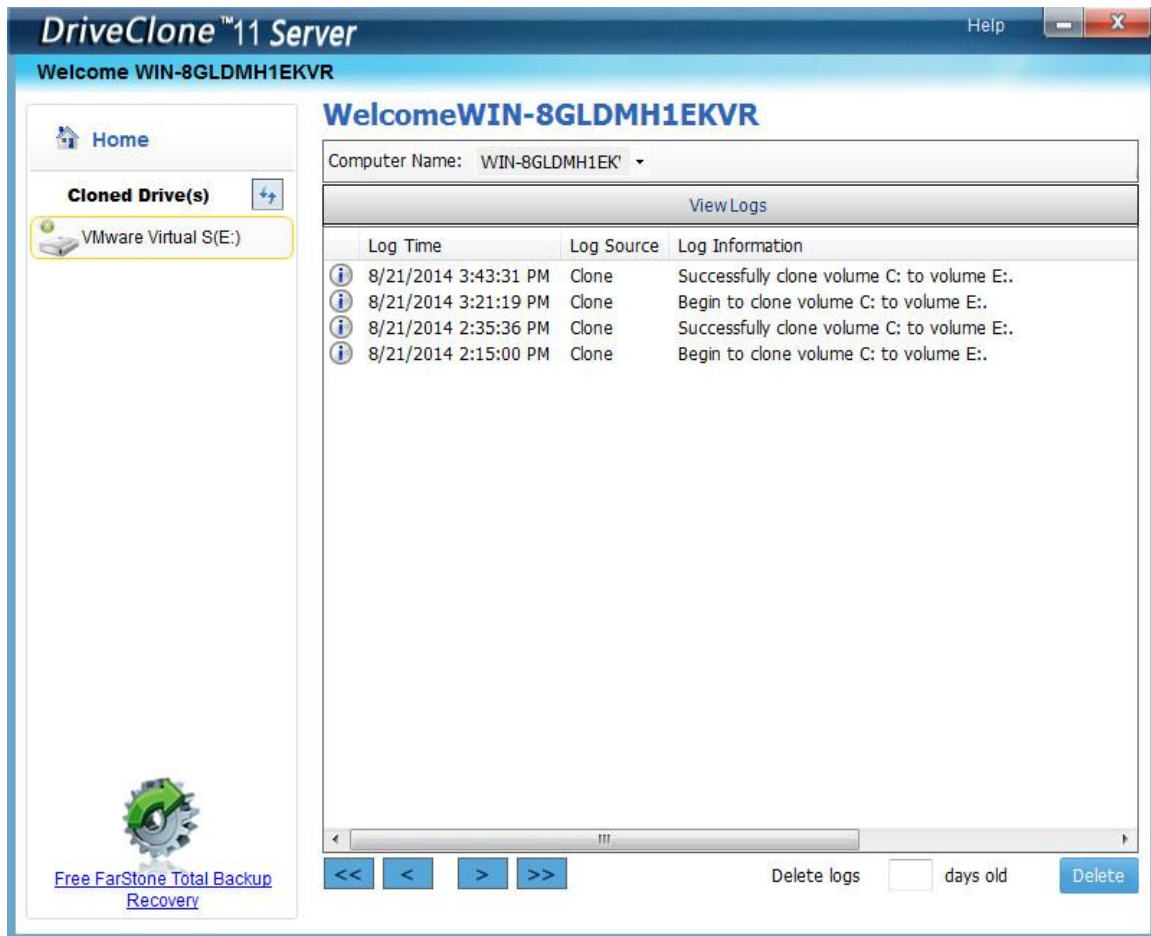
3.5 Clone/Convert to VM files

Convert a hard drive or partition to virtual format, such as Microsoft VHD, or VMWare VMDK.

1. Select a source disk or partition needed to be converted, then choose wanted virtual format and a storage path, click **Next** to continue.
2. After confirming your selections, click **Start** to proceed or **Previous** to change selection.
3. Click **Finish** to complete the converting process.

3.6 Logs

All logs related with cloning and conversion will be saved in Logs section.



The screenshot shows the DriveClone 11 Server interface. The title bar reads "DriveClone™ 11 Server" and "Help". The main window title is "Welcome WIN-8GLDMH1EKVR". On the left, there is a "Home" button and a "Cloned Drive(s)" section containing "VMware Virtual S(E:)". The main area displays "Welcome WIN-8GLDMH1EKVR" and "Computer Name: WIN-8GLDMH1EKVR". Below this is a "View Logs" section with a table of logs:

Log Time	Log Source	Log Information
8/21/2014 3:43:31 PM	Clone	Successfully clone volume C: to volume E:.
8/21/2014 3:21:19 PM	Clone	Begin to clone volume C: to volume E:.
8/21/2014 2:35:36 PM	Clone	Successfully clone volume C: to volume E:.
8/21/2014 2:15:00 PM	Clone	Begin to clone volume C: to volume E:.

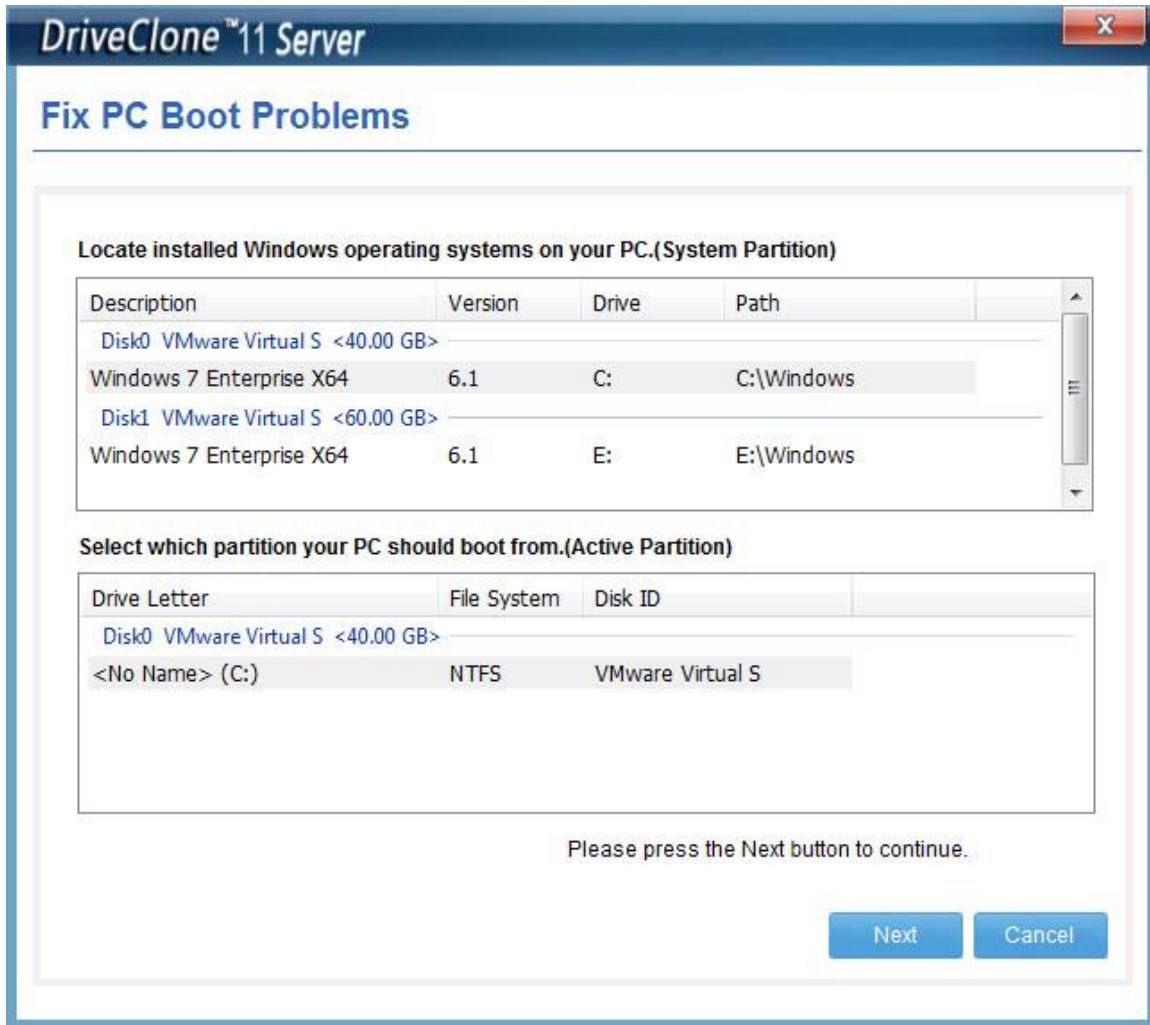
At the bottom, there are navigation buttons (left, right, first, last), a "Delete logs" checkbox, a "days old" input field, and a "Delete" button. A logo for "Free FarStone Total Backup Recovery" is visible in the bottom left corner.

Delete - Delete logs prior to a date.

3.7 Fix PC Boot Problems

Should Windows have boot failure issue with the cloned disks, this function will help you repair and fix booting issues.

1. Select **Fix PC Boot Problems**.



2. Select the installed Windows operating system on your PC.
3. Choose a partition that your PC should boot from (in general, this partition resides in the same hard drive of the system partition), and click **Next** to continue.
4. Check items you would like to fix, such as Boot Configuration Database and BOOT.INI, partition boot code, Master Boot Record (MBR) and boot disk unique ID (GUID).



Note

For most cases, check the first three options will fix boot issues.

5. Click **Start** and click **Finish** once it is completed.

3.8 Cloned Drives

Once a drive or partition was cloned at **Mirror Drive** column successfully, this job will be listed under **Cloned Drive(s)** column. Click that cloned drive or partition to run mirror drive.

Basic	(E:)
60.00 GB	60.00 GB NTFS
No media	14.46 GB Used

Legend: ■ Normal Partition ■ Used Space ■ Free Space

[Mirror Now](#) [Mirror Settings](#)
[Schedule Settings](#) [View Previous File Version\(s\)](#)

Protected Area: Partition
Mirror Drive: 5 Backup Points
Last Cloning: 8/21/2014 3:21:16 PM

[Free FarStone Total Backup Recovery](#)

Mirror Now: Click here to run an incremental cloning (only clone changed files) immediately.

Mirror Settings: Click here to configure incremental cloning and legacy files keeping

rules.

Schedule Settings: Set cloning task running time, "daily", "weekly", "monthly" or "one time only".

View Previous File Version(s): Click here to check saved history files.

3.9 Help Menu

The **Help** menu has technical support, manual looking up and other options available.



Choose one in the dropdown menu or use the corresponding shortcut key combination to get information you need.

Register Activate: Click here to activate DriveClone Server via Internet or email.

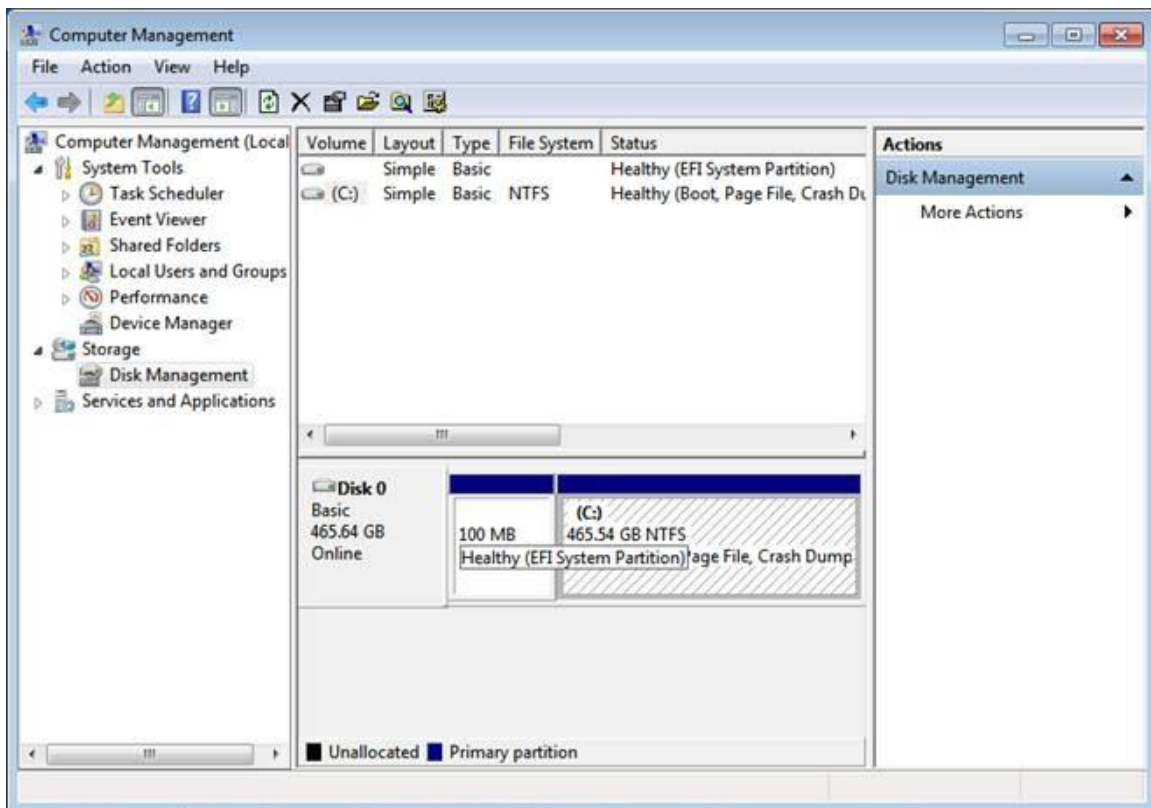
Chapter 4: Restore a UEFI-Based Computer

4.1 Introduction to UEFI

UEFI is short for Unified Extensible Firmware Interface. It's an advanced standard compared to legacy BIOS, such as it supports bootable GPT hard drive, larger capacity more than 2T, etc.

Since UEFI-based computers have bootable information written in their motherboards, you must set related hard drive information into the target computer after cloning. However, traditional BIOS-based computers don't need such step: you only need plug a cloned hard drive into a target computer and it should be immediately usable.

You can make use of Windows Disk Management tool to check if your computer is UEFI. This tool (the screenshot below) is available in every Windows.



If the type of hard drive where system partition resides is GPT, like above picture shows (EFI System Partition), your computer must be UEFI. But if it displays MBR, then your computer is traditional BIOS.

4.2 Set bootable hard drive for legacy UEFI computer

If your hard drive still fails to boot after running "Fix PC Boot Problems" introduced in Chapter [3.7](#), you may configure it in BIOS environment or set it using our Pre-OS environment tools.

1. Set bootable hard drive in BIOS mode

Different motherboard manufacturers have different flows for setting bootable hard drive. Please refer to your computer manual for details.

2. Set Bootable hard drive under our Pre-OS environment

- 1) Download FarStone bootable ISO from <http://www.farstone.us/download/boot/TBR9-RM-ISO-64bitCPU.zip>, and burn it into a DVD
- 2) Start your target computer with the DVD, and enter into Pre-OS environment
- 3) Select **Tools** tab and click **Set Bootable Hard Disk for UEFI Motherboard** icon. Then choose an UEFI-based hard drive in the dropdown menu to make it bootable, click **Next** to complete the steps.