

FarStone
DriveClone System Recovery
User's Guide

For OEMs and System builders

1. Glossary

FBP: Factory Backup Point

2. DriveClone System Recovery Overview

DriveClone System Recovery provides PC factory recovery solution for system builders and PC manufacturers.

With DriveClone System Recovery, OEMs and system builders can save an entire system, including the operating system, drivers, and third party applications in a hidden partition for restoration to original factory settings. Users can restore their systems to an original factory configuration with the simple touch of a hotkey (by pressing UP or DOWN arrow key when boot up), or alternatively, using a Recovery CD/DVD.

3. Benefits and Features

- ✚ In case of system failure, DriveClone System Recovery can be launched easily with a simple touch of a hotkey. Even users with minimal computer knowledge can restore their system to a preset backup point.
- ✚ As a result, DriveClone System Recovery dramatically reduces the frequency and duration of tech support calls with its easy-to-use interface.
- ✚ DriveClone System Recovery allows users to make recover CD/DVD's, giving them an added layer of protection.
- ✚ DriveClone System Recovery allows users to restore lost or damaged systems to their original factory state.

4. Pre-Installation Configuration (System Builder)

Before installing DriveClone System Recovery, make sure all required applications and drivers are installed on this computer. DriveClone System Recovery will create a complete Factory Backup Image of all installed data and store it into a protected, hidden partition.

Silent Installation

1. Decompress the installation package, and open the corresponding directory.
2. Search and open setup.ini.
3. Seek out the AUTOSETUP keyword. AUTOSETUP = TRUE means silent installation; If AUTOSETUP = FALSE, there will be messages displayed during product installation.

Boot Menu

1. Decompress the installation package, and open the corresponding directory.
2. Search and open language-sign-dcsr.ini.
3. Seek out the TIME keyword. TIME = 3 means the boot menu will be displayed for 3 seconds. User can press UP or DOWN arrow key to enter into Factory Recovery function. This value can be modified as needed, and value = 0 means boot menu function is disabled. If TIME = 0, please create a bootable rescue CD manually with DCSR program.

5. Install DriveClone System Recovery

Step 1 Install Windows on Original PC

Install the Windows Operating System to your master PC

Step 2 Install Drivers on Original PC

Install needed Drivers for all hardware to the master PC.

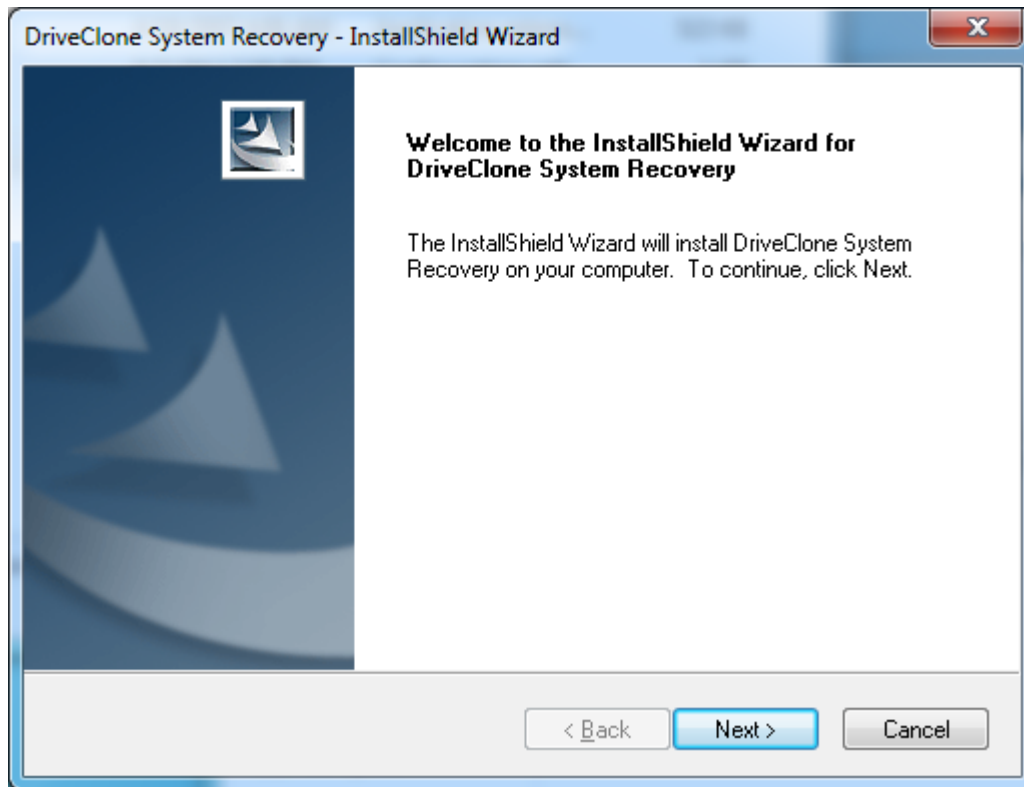
Step 3 Install Applications on Original PC

Install all necessary applications to the master PC, such as anti-virus software.

Step 4 Install DriveClone System Recovery on Original PC

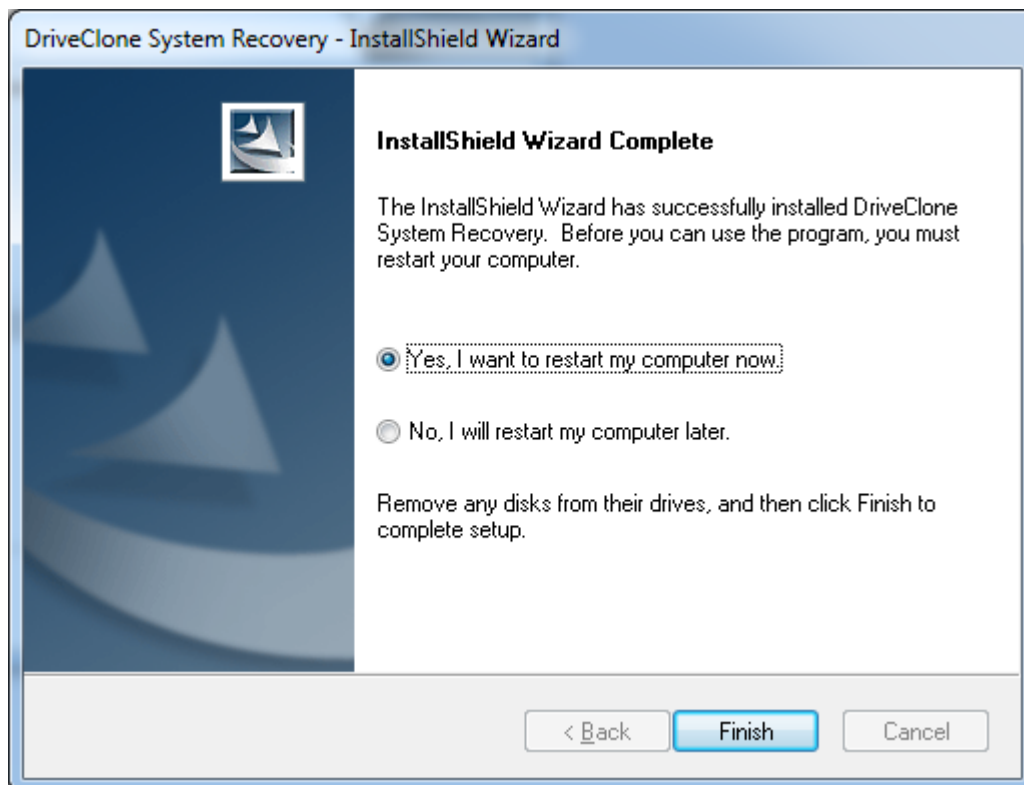
Make sure you have completely installed all drivers, applications and software before installing DCSR.

- a. Run the DriveClone System Recovery Installation Program.
- b. Below screen will appear, click “**Next**” to continue.



c. Click **Install** to begin installation.

As soon as this stage of installation completes, you will be asked to restart the computer. Click **Finish** to complete the installation in Windows (see below screen).

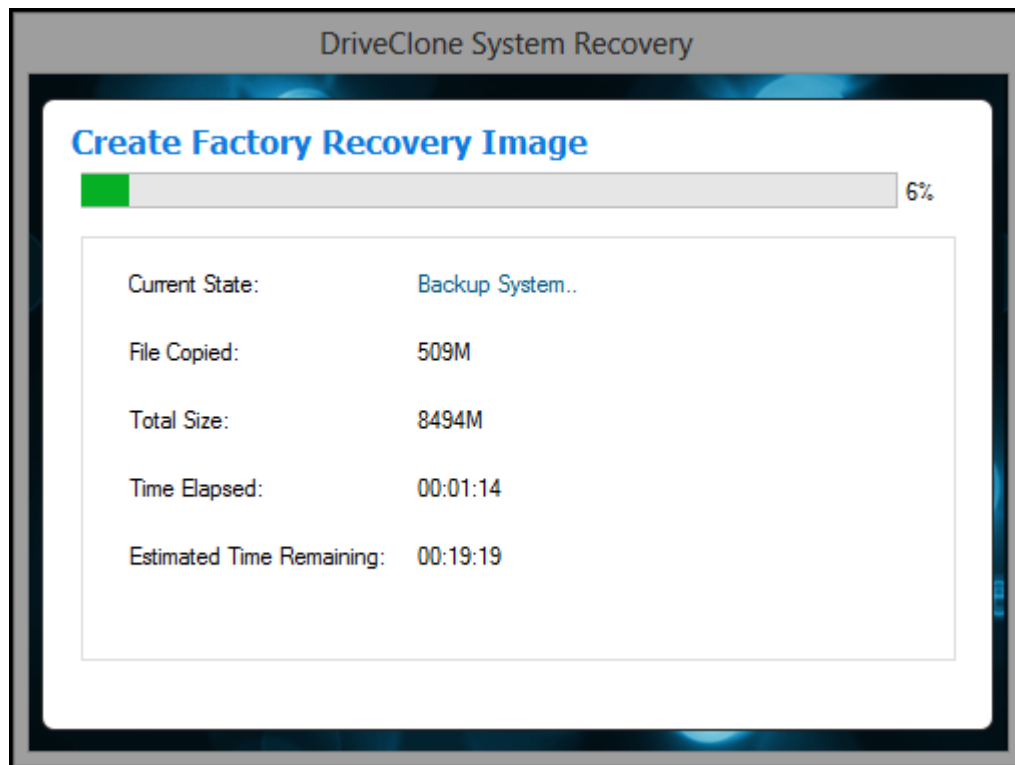


Step 5 Seal the Original PC

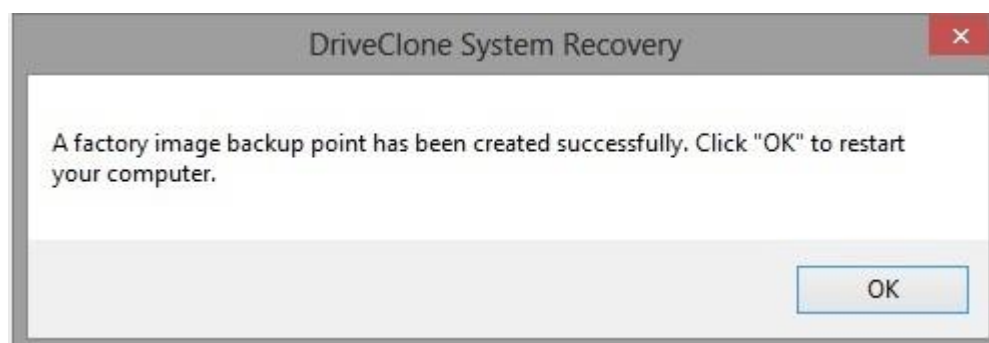
Use Sysprep to seal the system, and then restart your system manually.

Step 6 Create Factory Backup Point (FBP) on Original PC

The system will automatically enter DriveClone System Recovery Pre-OS Configuration to create a Factory Backup Point (FBP) (see below screen) in the hidden partition. The FBP image will be used to restore system to your manufacturer's factory PC configuration in the future when disasters strike.



Once the Factory Backup Point is created, click **OK** to shut down your computer.



At this stage, DriveClone System Recovery installation is completed.

Step 7 Duplicate Original PC Hard Drive

After you have successfully created a Factory Backup Point (FBP) on the original PC (Master PC), you can duplicate it for mass productions. There are tools for the duplication, such as disk copier, or DriveClone software. Please refer to their user's guides for more information.

Step 8 Packing & Shipping for New PCs

"Burn-in & test" then packing/shipping your New PC to customers.

6. DriveClone System Recovery End User Functions

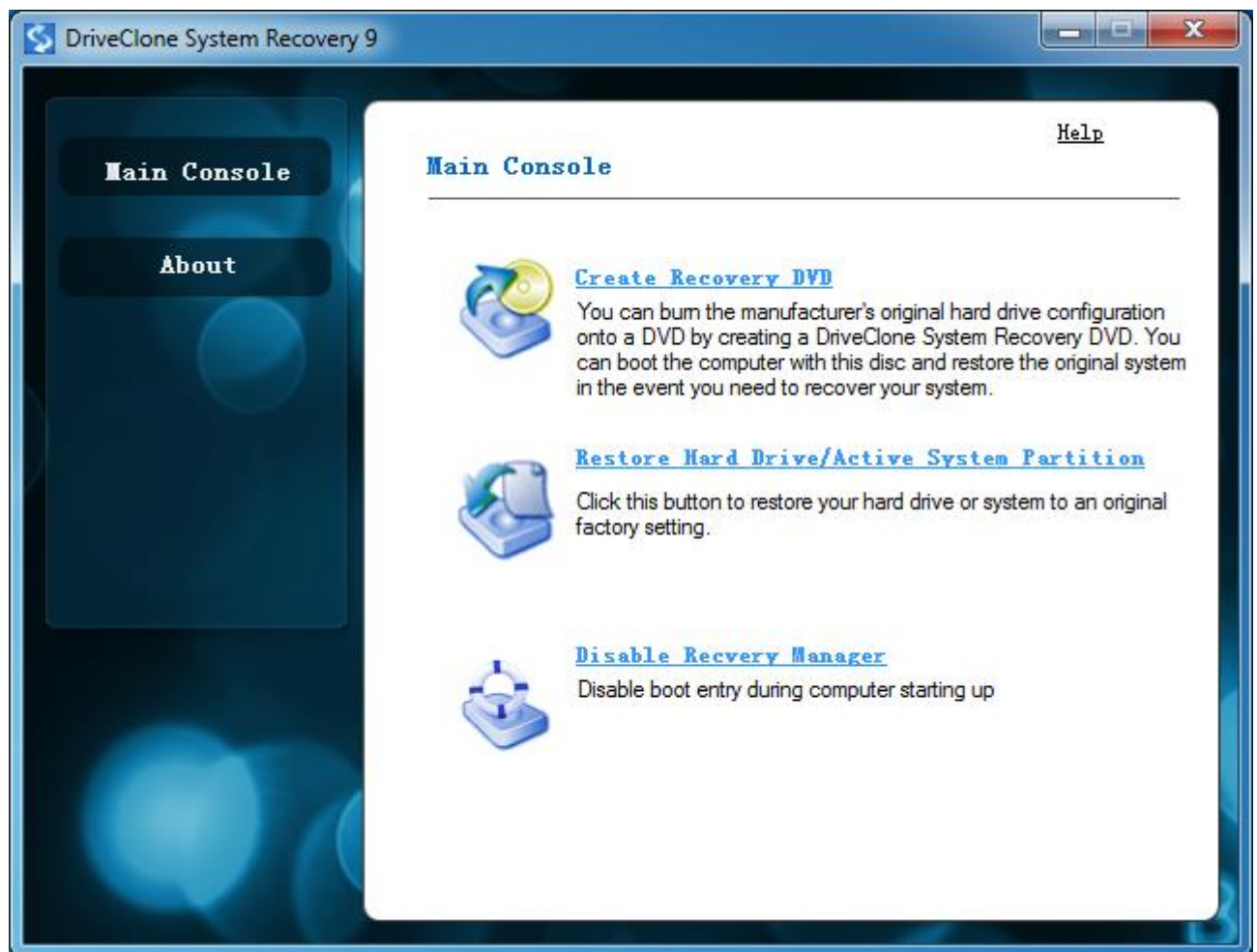
This chapter is for end users only.

6.1 Create Recovery DVD

Step 1 Launch DriveClone System Recovery

Within Windows, double click DriveClone System Recovery icon from the desktop.

The screen below will appear. Click **Create Recovery DVD** from the Main Console.



Step 2 Select Media

Choose the DVD writer to create the Recovery DVD.

Step 3 Follow Instructions

- Click **Next** to continue.
- A dialog box will appear and prompt you to insert a blank disc. Click **Yes** to start making the Recovery DVD. If More than one DVD is to be burned, the image

integrity will be checked, if it is available, the next one can be burned.



Note

If there is data on the disc, you will be asked to erase the data on the disc. Click Erase to erase the data on the disc, click **Change** to insert another blank disc, or click **Cancel** to stop burning process.

7. Uninstall DriveClone System Recovery

Uninstall DriveClone System Recovery:

Click Start Menu→Control Panel→Add or Remove Program→DriveClone System Recovery→Remove



Note

The Un-installation of DCSR will remove not just DCSR programs but also the hidden partition in whole.