

# **FarStone Virtual Drive Network**

## **User's Guide**

# Copyright Notice

No part of this publication may be copied, transmitted, stored in a retrieval system or translated into any language in any form or by any means without the expressed written permission of FarStone Technology, Inc.

FarStone grants you the right to use one copy of the enclosed software program ("SOFTWARE") on a single computer. If the SOFTWARE is installed on a network, or more than one user can run the SOFTWARE at the same time, you must purchase an additional license for each additional user or computer.

## **Trademark**

FarStone® is a trademark of FarStone Technology, Inc. Microsoft, Windows® and MS-DOS® are registered trademarks of Microsoft Corporation. Other product names mentioned in this User's Guide may be trademarks or registered trademarks of their respective companies.

## **FarStone Technology, Inc.**

### **U.S. Headquarters:**

10415 Slusher Drive, Unit 1,  
Santa Fe Springs, CA 90670, USA  
Phone: +1-562-373-5370  
Fax: +1-562-946-6030  
[www.farstone.com](http://www.farstone.com)

## **Technical Support**

Answers to frequently asked questions are posted on our website at [www.farstone.com/support/product-support.htm](http://www.farstone.com/support/product-support.htm). For other support issues, please contact FarStone Technical Support at [www.farstone.com/support](http://www.farstone.com/support).

[Copyright© 2000-2011 FarStone Technology, Inc. All rights reserved.](#)

## Contents:

Copyright Notice.....	2
Chapter1:Introduction.....	5
1.1 What is VirtualDrive Network .....	5
1.2 Features and benefit .....	6
1.3 Benefits for Schools and Businesses .....	8
1.3.1 Benefits for Schools.....	8
1.3.2 Benefits for Businesses .....	9
Chapter 2: Installing VDN.....	9
The Brief guide to VDN installation.....	9
2.1 System requirements.....	11
2.2 Installing the VDN (VirtualDrive Network) Server.....	11
2.3 Installing the VDN Console or Client programs.....	12
Chapter3: Using the VDN Console Program.....	13
3.1 Starting the VDN Console.....	13
3.1.1 The VDN Console.....	15
3.1.2 VDN Right-Click Menu in Taskbar.....	16
3.1.3 VDN Console Settings.....	17
3.2 Building Virtual CDs (VCDs).....	18
3.2.1 Create a Virtual CD from CD/DVD/Blu-ray Disc .....	18
3.2.1.1 Advanced setting.....	19
3.2.2 Building an Image from files or folders .....	21
3.2.2.1 Creating a CD/DVD/BD project .....	21
3.2.2.2 Adding Files and Folders to a Project.....	22
3.2.2.3 Save the created files to be projects.....	23
3.2.3 Creating a Virtual CD from a Project .....	24
3.2.4 Custom virtual CD .....	26
3.2.5 Conversion between an ISO 9660 image file and a VCD file .....	28
3.3 VirtualDrive CD/DVD/Blu-ray Burning Program.....	29
3.3.1 Burn CD/DVD/Blu-Ray from a Virtual CD .....	29
3.3.2 Burn a Custom CD/DVD/Blu-ray Disc .....	30
3.3.3 Burn MP3 files onto a CD/DVD/Blu-ray Disc .....	30
3.3.4 Burn an audio CD .....	31
3.3.5 Burn a CD/DVD/Blu-ray Disc from a Project .....	32
3.3.6 Viewing Device Info.....	33
3.4 Managing VCD access on the VDN Server.....	35
3.4.1 Users and Groups - Overview.....	35
3.4.1.1 Adding/Removing Users.....	35
3.4.1.2 Adding Users to Groups .....	39
3.4.2 Sharing VCD Folder.....	42
3.4.2.1 New Sharing .....	42
3.4.3 VCD License .....	43
3.4.3.1 Set License for a VCD File .....	44
3.4.3.2 View License.....	44
3.5 Managing VCDs in the VDN Server.....	45
3.5.1 Adding VCD folders (CD Jukebox).....	45

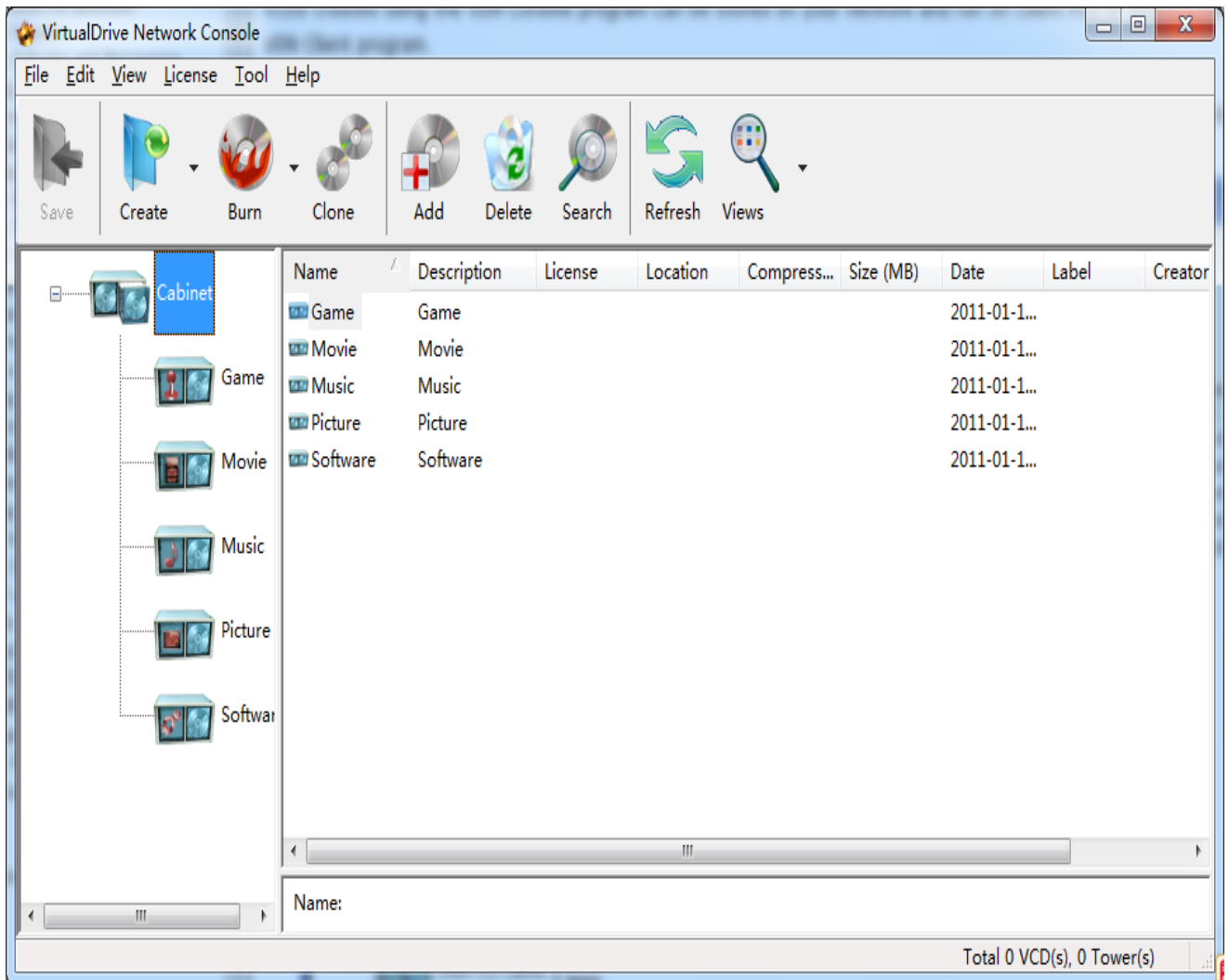
3.5.2 Changing a VDN Folder Description .....	46
3.5.3 Adding VCDs to a VCD Folder .....	46
3.5.4 Deleting a VCD Icon or VCD File .....	49
3.5.5 VCD properties & Custom Auto-run Function.....	49
3.5.6 Searching VCD .....	50
3.5.7 Software information .....	54
3.5.8 Extracting files from VCD .....	54
3.6 Viewing Client VCD Usage .....	56
3.6.1 Viewing VCD Usage .....	56
3.6.2 Viewing User Statistics .....	57
3.7 Backing up VCD List .....	58
3.7.1 Backing Up VCD list .....	58
3.7.2 Restoring VCD List .....	60
3.8 Cloning CD/DVD or BD .....	61
Chapter 4: Using the VDN Client Program.....	63
4.1 Starting the VDN Client Program .....	63
4.2 Running Virtual CD-ROMs (VCDs) .....	64
4.3 Ejecting a VCD .....	65
4.4 Viewing VCD Properties .....	66
4.5 Searching VCD .....	67
4.6 Setting the Number of Virtual Drives.....	68
4.7 Updating changes from the VDN Server .....	69
Chapter 5: Uninstalling VirtualDrive Network.....	70
5.1 Uninstalling VirtualDrive Console .....	70
5.2 Uninstalling VirtualDrive Client .....	70
5.3 Uninstalling VirtualDrive Network Server .....	71
Chapter 6: Appendix.....	71
6.1 FAQ.....	71
Software License Agreement.....	74

# Chapter1:Introduction

## 1.1 What is VirtualDrive Network

VirtualDrive Network (VDN) from FarStone Technology Inc., includes the VDN Server, VDN Console and VDN Client programs. VCDs created using the VDN Console program can be stored on your network and run on Client PCs or Workstations using the VDN Client program.

The VDN Console can turn your CDs into VCDs that will run on the VDN Client just like if it were in a physical CD drive.



You can create up to 23 Virtual CD/DVD Drives that are accessible through Windows Explorer just like a regular physical CD/DVD Drive. You no longer need to change CDs by hand, deal with the hassle of trying to find them, and keeping them clean and working.

## **1.2 Features and benefit**

### **1. Runs applications without CD-ROM:**

Select and insert a VCD into the VirtualDrive and the VCD appears as though a CD is actually in a physical CD drive.

### **2. Supports most disc formats, including:**

CD-ROM, Audio CD, DVD-ROM, DVD-Video, Video CD, Mixed-Mode CD, Multi-Session CD, CD-Extra, CD-Text, BD and Photo CD.

### **3. Automatically recognize CD format**

VirtualDrive can distinguish the type and format of the CD it is compressing, and run the correct program.

### **4. Faster than a 200X CD-ROM drive:**

Run CDs directly from the hard drive with incredible 200X speed. (with Ultra DMA drives)

### **5. 1000 Virtual Jukeboxes:**

VirtualDrive Network supports up to 1000 Virtual CD Jukeboxes (CD folders), with each folder able to hold an unlimited number of CDs.

### **6. Burn your VCDs onto a recordable disc**

VirtualDrive combines the functions of CD/DVD/BD emulation software with CD/DVD/BD burning capabilities. It allows users to copy CD/DVD/BD images from the hard disk to a recordable medium.

### **7. Easy Management:**

The Console creates and configures the VirtualDrive Network. Changes affect clients instantly. Clients have no need to worry about the details. VirtualDrive doesn't copy hundreds of thousands of files from the CD. Rather, it actually creates a CD image file on the hard drive. Only this image file needs to be created or removed.

#### **8. Compression:**

VirtualDrive incorporates a high performance compression engine and automatically decompresses on the fly when the VCD is accessed.

#### **9. Removable media:**

VCD files can be placed on many different types of removable media extending the capability of such systems.

#### **10. Saves space and hardware costs:**

Take no physical space in your office and has no hardware maintenance costs.

#### **11. 100% compatible:**

VirtualDrive is completely compatible with all types of CD applications. Some CD applications only run (lock) from a physical CD drive. These applications will not run from a mapped network drive, like a drive mapped to your server CD drive (or Jukebox). VDN supports all such CD applications.

#### **12. Share Resources:**

Storing Virtual CD's on a file server allows CD resources to be shared throughout the network.

#### **13. Built in CD benchmark and browser:**

Evaluate the data transfer rate and access time for any of your CD drive(s).

#### **14. CD Audio Compression:**

Listening to your favorite music has never been easier. Just select the tracks you like and they will be automatically compressed and converted to an VCD file.

#### **15. VirtualDrive Custom AUTORUN feature:**

VirtualDrive Network provides a (built-in) comprehensive way to automatically startup VCDs.

#### **16. Create Custom Virtual CDs from selected files:**

Customize your own VCDs by removing unnecessary files from the source CD.

#### **17. Easy CD Management:**

Organize CDs and manage all CD access from a single workstation.

#### **18. Security**

The VirtualDrive Network can set security properties according to clients' demand. Each client can only use the Virtual CD authorized by Console.

#### **19. ISO Support**

VirtualDrive Network supports the ISO image file format, so you can transfer you data more conveniently.

## **1.3 Benefits for Schools and Businesses**

### **1.3.1 Benefits for Schools**

1. **Easy management:** As many as 500 CD-ROMs may be needed for a class with 25 computers and 20 educational CD titles. With VDN you no longer have to manage all the discs and worry about damaged discs or losing them. You only need one copy of each title to create a VCD image.

2. **Client machines don't need CD/DVD drive:** Students are unable to install their own personal CD software. You save money by buying computers without CD/DVD Drives.

3. **The VDN Server:** Everyone has 24/7 access to the VCDs on the server from any computer on the network.

## 1.3.2 Benefits for Businesses

1. **RD departments:** Information is at your fingertips. Keep everything on the VDN CD server such as MSDN resource CDs, and reference guides.
2. **Education:** Employee trainings can be more efficient and cost effective by storing training materials on the VDN Server.
3. **Information Management:** The amount of data to be stored is always increasing. VDN CD server can be used to efficiently manage data resources or totally replace CD Jukeboxes systems.

# Chapter 2: Installing VDN

## The Brief guide to VDN installation

VirtualDrive Network(VDN) consists of Server, Console and Client. You need to install Server first, and then continue to install Console and Client through the network folder shared by Server.

### 1. Install the VDN Server

Please log on Windows through administrator user account, run the installation Program.

Please Pay attention in installation process:

- (1) You need to enter company name;
- (2) You should select folder to store Console & Client installation application. And the program will share it.

In the last step for installing VDN Server, it will show you the shared folder (e.g. \\Local IP\VDN) which VDN Console and VDN Client located in. You need to access this shared folder through the computer you want to install Console and Client to complete installation process of Console and Client.



#### **Note**

If the computer which installed VDN Server did not execute "Network Sharing Wizard" before, you may cannot access the shared folder it shared. Please run "Network Sharing Wizard" manually to share the folder which contains Console and Client installation application.

## **2. Install the VDN Console**

Please Use administrator user account to log on the computer which you want to install Console. Then, access to the shared folder (\\VDNServer\VDN), run Setup.exe in it to begin installation process.



#### **Note**

In the interface to choose storage path, you need to check "VirtualDrive Network Console" to install Console. After finishing installation, you can run console to Create Virtual Disc , burn disc, manage cabinet and so on.

In order to keep the stability and efficiency of VDN, we suggest you just install one Console.

## **3. Install the VDN Client**

Please use administrator user account to log in the computer which you want to install Client. Then, access to the shared folder (\\VDNServer\VDN), run Setup.exe in it to begin installation process.



#### **Note**

If you have installed Console, please do not check "VirtualDrive Network Console" in the interface to choose storage path.

After installation complete, you can run Client to insert Virtual disc and other operations.

## 2.1 System requirements

### 1. VDN Server

Windows XP/Server 2003/Vista/Server2008 (32-bit & x64) /Windows 7  
70 MB HDD space

### 2. VDN Console:

Windows XP/ Server 2003/Vista/Server2008 (32-bit & x64) /Windows 7  
A CD/DVD drive  
40 MB HDD space if working peer to peer

### 3. VDN Clients:

Windows XP/Server 2003/Vista/Server2008(32-bit & x64) / Windows 7  
No CD/DVD drive is required.  
40 MB HDD space if working peer to peer

## 2.2 Installing the VDN (VirtualDrive Network) Server

### Pre-Installation

Be sure to install the VDN components according to the following order: Please install VDN Server first, then VDN Console/VDN Client. Make sure that VDN Server works normally during the installation of VDN Console and VDN Client.

Follows the steps below to install VDN Server:

**Step 1** Insert the VDN CD into the CD drive and run the VDN installation program (Setup.exe) or run self-extracting installation package(EXE) downloaded from the Internet.

**Step 2 Select** your language preference and click **OK**.

**Step 3** Click **Next** to continue.

**Step 4** Carefully read the **License Agreement** and select **Yes**, if you accept the license conditions.

**Step 5** Enter your personal information and then click **Next** to proceed.

**Step 6** Select the installation location(e.g.C:). And then click **Next** to begin the installation.

**Step 7** Carefully read the note, if you haven't shared a file or folder before, our program's share folder may can't be accessed. Please run the "Network Setup Wizard " or "Just enable file sharing". Click **OK** to continue.

**Step 8** A dialog box pops up to tell you the success of installing VDN Server. It also shows you the shared folder (e.g. \\Local IP\VDN) which VDN Console and VDN Client located in. Click **Finish** to complete installation of the VirtualDrive® Network program files.

You will need these two shared directories to install the VDN Administrator/ VDN Client, and make those two work properly. So it is suggested that you check the share setting prior to installing the other two components.

## 2.3 Installing the VDN Console or Client programs

Once the VDN Server have been installed into a shared directory, both the VDN Console and the VDN Client installations can be executed by running the **setup.exe** file from the VDN Server shared directory. There are two methods to install the VDN Console and Client programs ---manual installation and silent installation.

Follow the steps below to run manual installation:

**Step 1** Select **Start** on the Windows taskbar, then **Run**.

**Step 2** Enter the UNC path to the setup program, the shared VDN Server directory.



### Note

The shared VDN Sever directory is composed of the computer name and shared folder name where VirtualDrive® Network sever program is installed. (e.g. [\\local IP\vdn\setup](#)). The "local IP" is the IP address where the shared folder in, and "vdn" is the shared folder name.

**Step 3** Click **Run** to launch the VDN Setup Wizard.

**Step 4** **Select** your language preference and click **OK**

**Step 5** Click **Next** to continue.

**Step 6** Carefully read the **License Agreement** and select **I accept the terms in the license agreement**, if you accept the license conditions. Click **Next** to continue.

**Step 7** Select the installation location(e.g.C:). Select the checkbox below if you want to install the VDN Console. If you do not want to install VDN Console, do not select it. And then click **Next** to begin the installation.

- a. If you do not select to install VDN Console, you will install VDN Client only. VDN Client will require you to enter the product serial number: You also can use an evaluation version without a product serial number for 15 days. And you just need to enter serial number in VDN Client, VDN Console do not need to enter serial number. will Click **Install** to begin the process. Then click **Finish** to finish installation.
- b. If you select to install VDN Console, click **Install** to begin installation. Then click **Finish** to finish installation.

## Chapter3: Using the VDN Console Program

### 3.1 Starting the VDN Console

The "VirtualDrive" icon will be displayed in the bottom-right corner in the Windows Taskbar after the VDN console program is successfully installed on the console workstation.




To start the VDN console program, double click on the VirtualDrive tray icon or right click on the tray icon and select "VirtualDrive Network Console".



Click **Continue** and a dialog box will pop up:

**Logon** ✕

Enter your password for VirtualDrive Network Administrator.



User Name: Administrator

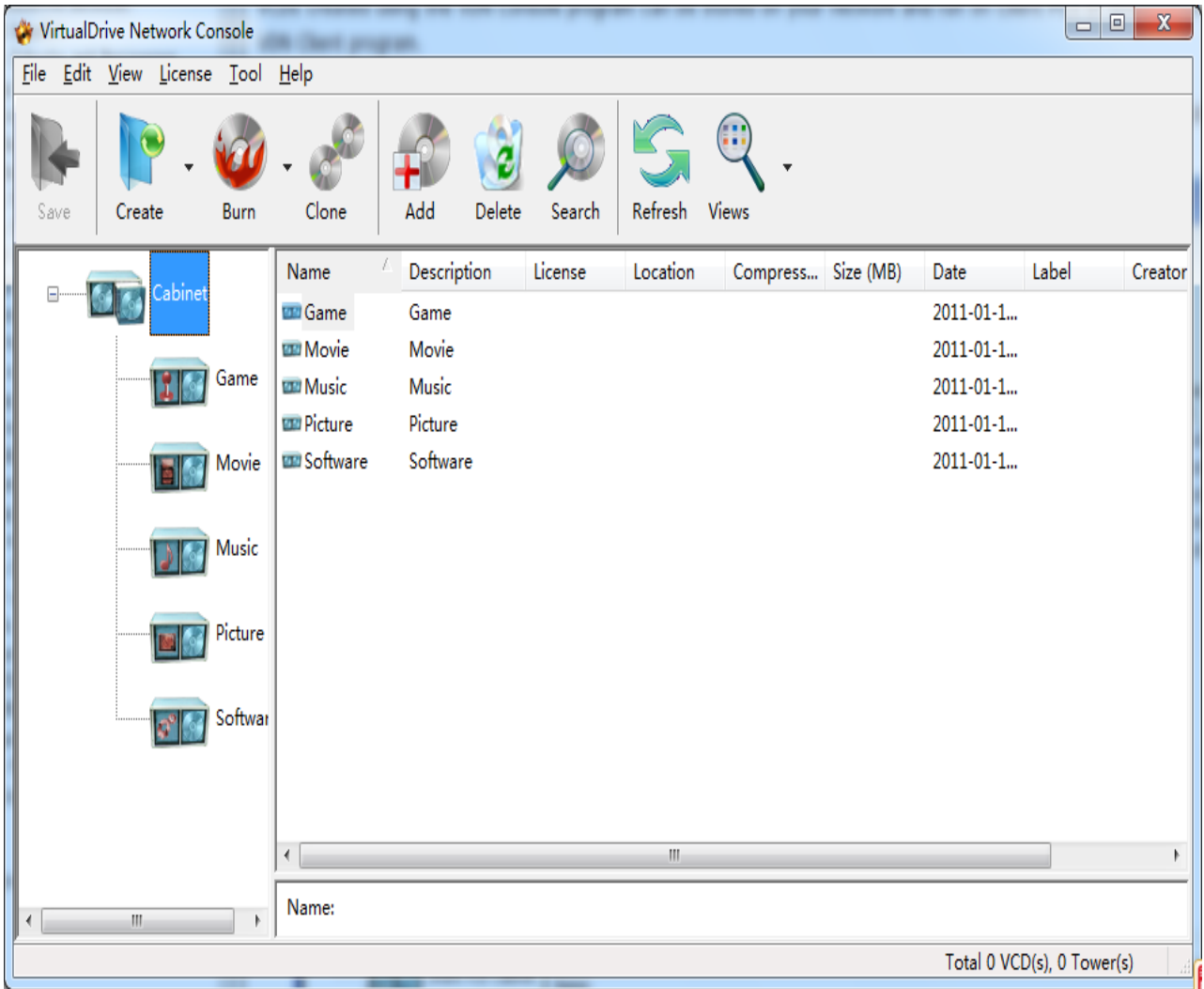
Password:



**Note**

The default password is nothing.

Click **OK** and you will enter the VDN Console:



### 3.1.1 The VDN Console

**Toolbar:**



The above figure is the default toolbar of VDN Console.

### 3.1.2 VDN Right-Click Menu in Taskbar

After successfully installing the VDN Console program on the Console workstation, the "VirtualDrive" icon will be displayed at the bottom-right corner in the Windows Taskbar.



Right-click on this icon will open the figure:



**VirtualDrive Network Console:** Launch VDN Console

**VirtualDrive Client:** Launch VDN Client

**New Custom Image :** Start CD/DVD Burning

**New Virtual Drives:** Set the number of virtual drives

**Device Properties:** Check the Device Information and Disc Contents

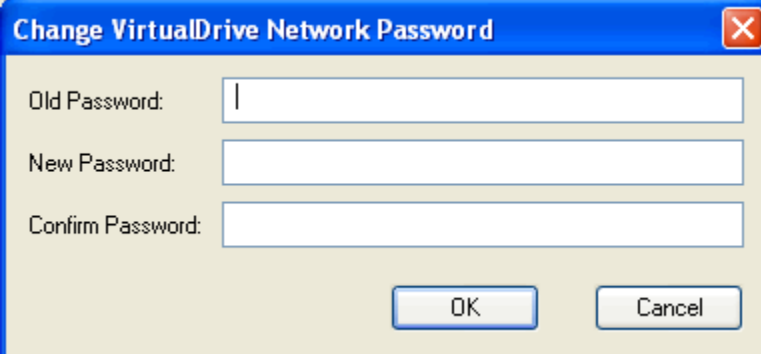
**Browse:** Check the number of virtual drives and inserted CD information

**Exit:** Quit VirtualDrive Network

### 3.1.3 VDN Console Settings

#### Changing the Password

Click View up the toolbar, then select Option. A dialogbox pops up. Click the checkbox to select **Verify the authority for VCD folder----** Enables the Password dialog on client side computers.



The image shows a dialog box titled "Change VirtualDrive Network Password". It has a blue title bar with a close button (X) in the top right corner. The dialog box contains three text input fields: "Old Password:", "New Password:", and "Confirm Password:". Below the input fields are two buttons: "OK" and "Cancel".

You can set or change the password to the VDN Console by selecting Security on the menu bar. Then select **Password**.

You will be required to enter the current Console Password, type in the new password and then re-enter the new password to confirm.

#### VDN Console Setup -Views

Select **Views** on the menu bar .

**large Icons:** You will see the large icons on the interface if you select it.

**Small Icons:** You will see the small icons on the interface if you select it.

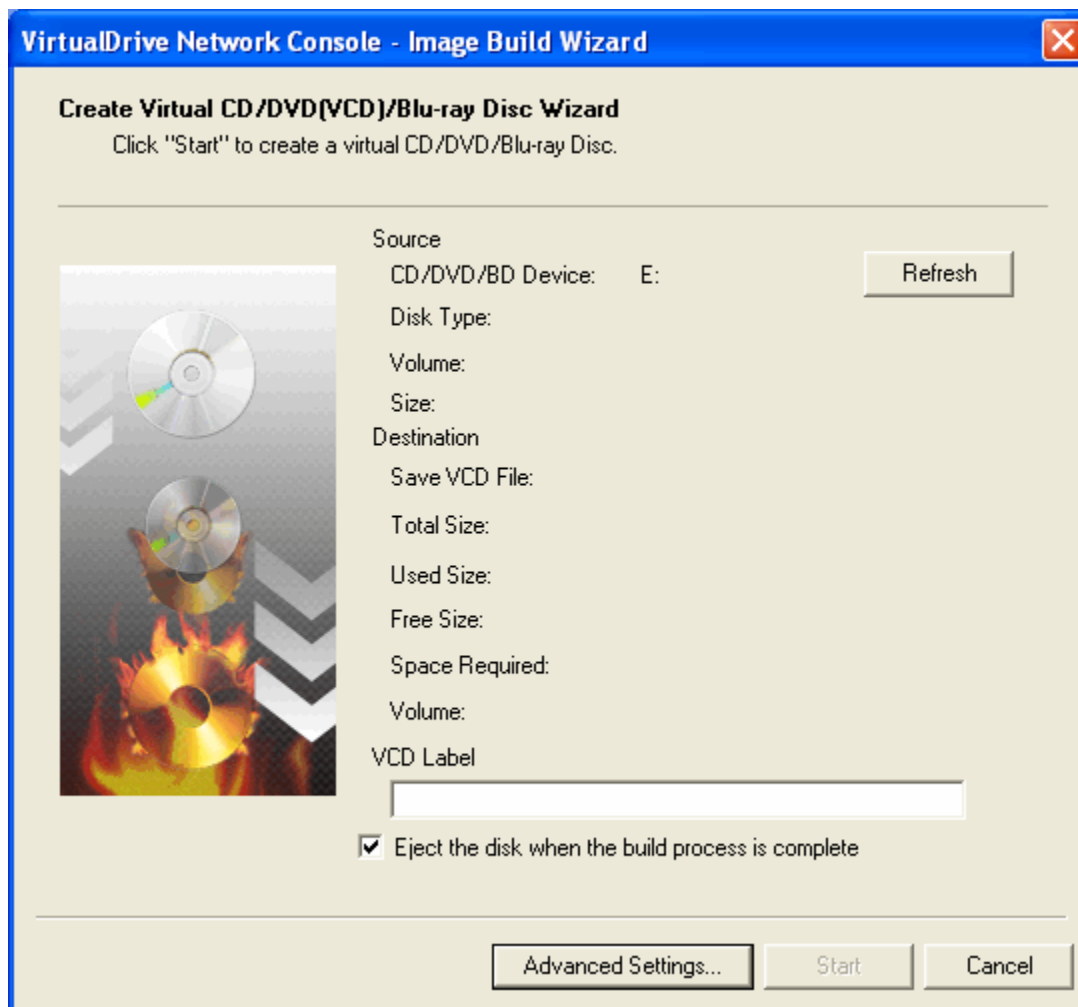
**Cover View :** You may customize CD covers by adding or editing the pictures. The utility enables you to easily find the virtual CD you want to access.(refer to [3.2.4](#))

**Detail:** Select this to see the detail of file folders below.

## 3.2 Building Virtual CDs (VCDs)

### 3.2.1 Create a Virtual CD from CD/DVD/Blu-ray Disc

Click **Create** up the toolbar, you can create a Virtual CD from CD/DVD/Blu-ray Disc.



Insert a CD into your drive to create a virtual CD. Follow the steps. If you do not need to create an image from CD/DVD/BD, please choose "**Cancel**".

1. Insert the CD/DVD/BD into drive.

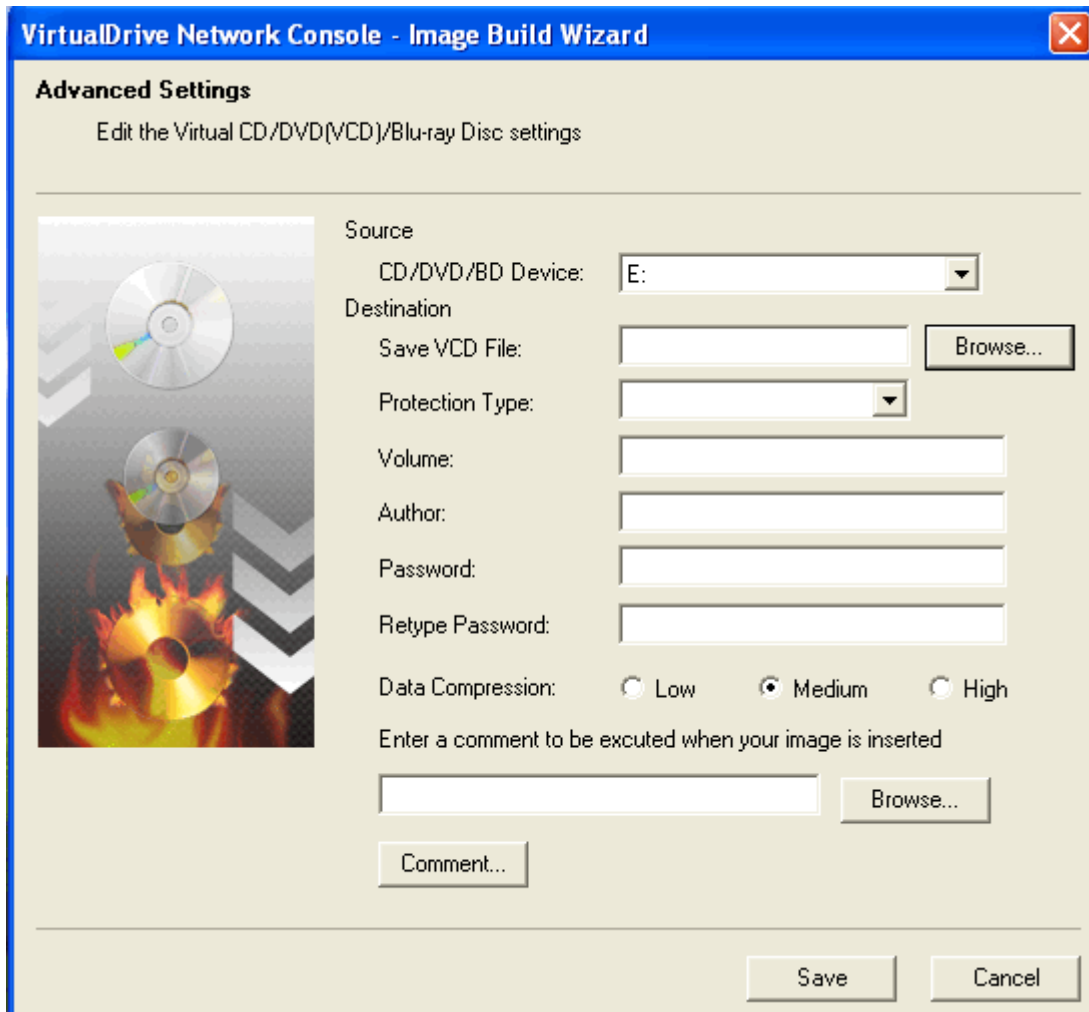
2. Click "**Refresh**". Details of source CD/DVD/BD and the default setting for the file destination will appear in the box.
3. Click **Advanced setting** to reselect source drive, store path for disc image, set password protection for VCD and so on. Click **Save** to save your settings.

**Tip**

If you want the virtual CD you created added to the cabinet automatically, please keep the store path as defaulted(e.g.C:\users\user\Documents\VCD\ ).

4. Click "**Start**". Create a virtual CD image.
5. When the process finished, Click "**Finish**". Now, if you store the image in default path or network share, Virtual CD will be added into the cabinet automatically. Otherwise you can add it manually.

### **3.2.1.1 Advanced setting**



**Protection Type:** select a known protection type from the dropdown list. Intelligent extraction is the recommended choice for you to protect your image.

**Author:** Enter the name of the CDs publisher or author (i.e., FarStone Technology).

**Password:** set a password for VCDs which will be required when accessing the VCD

**Data compression:** save hard drive space; however, the "low" to "high" options will shorten or prolong the time it takes to build a VCD.

**Comments:** the comments are the descriptions of the image.

Once Advanced setting is complete, click "save". Start creating the virtual CD/DVD.

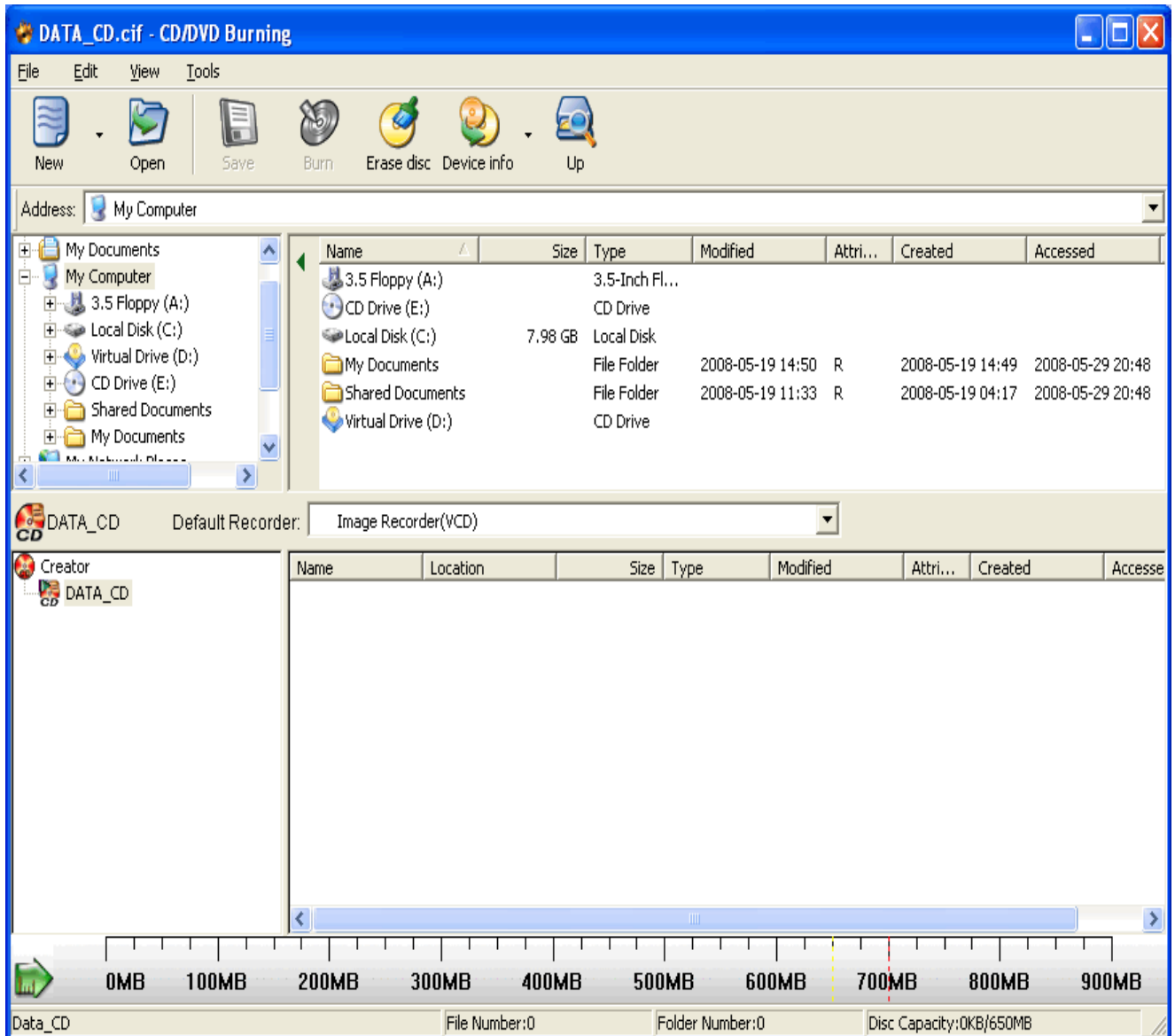
## 3.2.2 Building an Image from files or folders

You can burn a project of selected files to CD/DVD and BD or save it as a virtual CD (VirtualDrive Network Image file). Because disc types are created using the same method, we describe how to make them here.

### 3.2.2.1 Creating a CD/DVD/BD project

You can create various types of projects in the utility by clicking **Create**. To start a new Data CD/DVD/BD project, select any of the following options from the VDN Console:

1. Click "**create virtual CD/DVD from files/folders**". You may directly enter into the interface of the project.
2. **New - Data CD/Data DVD/data BD** or;
3. Click the small triangle to the right of the **New** button, then select **Data CD/Data DVD/data BD**, or;
4. Right-click in the Project Pane and select **New - Data CD/Data DVD/data BD**.



### 3.2.2.2 Adding Files and Folders to a Project

You can now add files and folders to your project using any of the following methods:

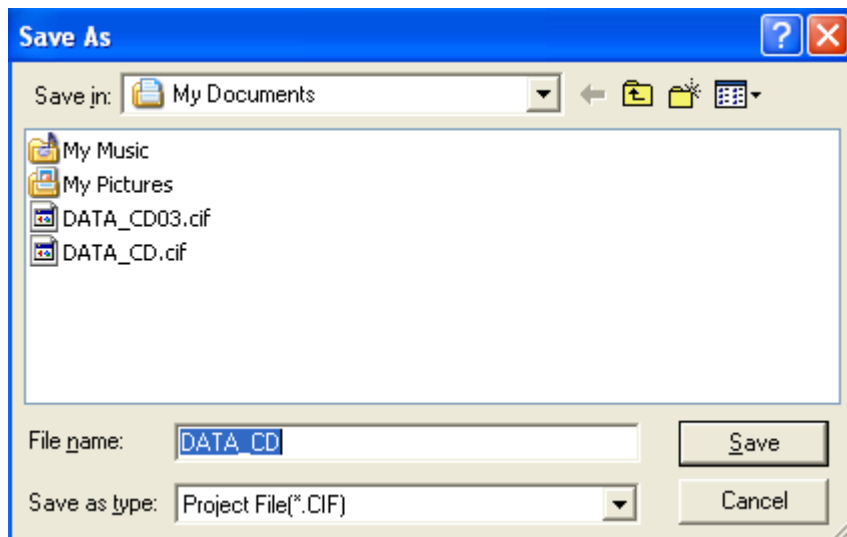
1. Drag files and folders from the Source Pane or from Windows Explorer to the Current Project Pane. (Windows 2000/XP available only)
2. Copy and paste files and folders from the Source Pane or Windows Explorer to the Current Project Pane.
3. Select files and folders from the Source Pane, right-click on the selected objects, and click **Add**.

4. Select files and folders from the Source Pane and choose **Edit - Add to Project**.
5. Select **Edit - Add File** to display the Open dialog box. You may then select your files and folders.
6. Right-click the Destination Project (to which the file will be added) or a destination folder from the Project Pane and choose **Add File**. This will display the Open dialog box, where you can select your files and folders.
7. Right-click on any blank area of the Current Project Pane and select **Add File** to display the Open dialog box. Select your files and folders.

### 3.2.2.3 Save the created files to be projects

If you prefer to save the files as projects anywhere on your computer when the image is complete, you can do the following:

1. Click **Save** button or Right-click in the Project Pane and select **Save**.
2. A box pops up in which you can choose the location where the project is saved and set a name for it.



3. Click **Save**



#### Note

As you add files to your project, you can preview documents, photos, videos, and audio files by double-clicking on their icons in the Source Pane.

You can also view the contents of a folder by right-clicking on the folder and selecting **Open**.



#### Note

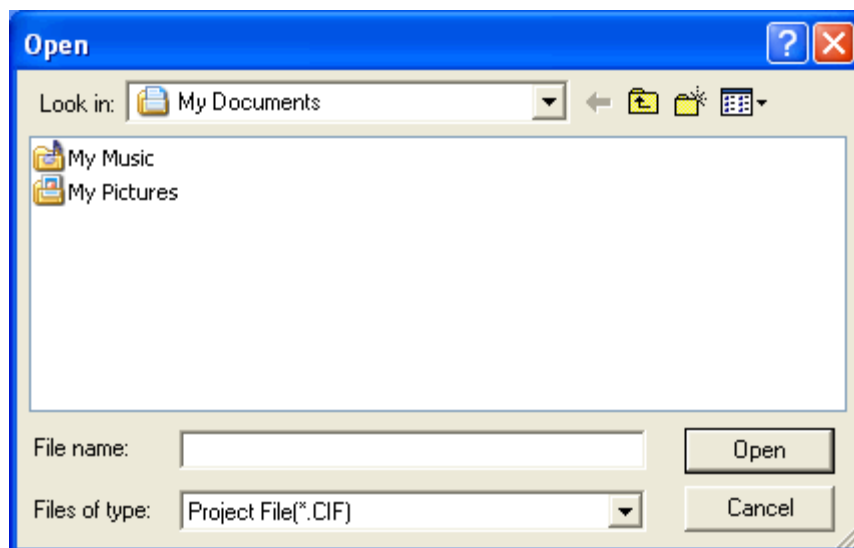
The horizontal scale bar at the bottom of the Project Pane displays the total size of the project. The default scale is set automatically according to the project type you are creating.

You can change the scale by clicking the icon in the left corner of the toolbar.

### 3.2.3 Creating a Virtual CD from a Project

Whether do you have previously created a project or it is your first time to create, the feature can help you customize the project by following these steps:

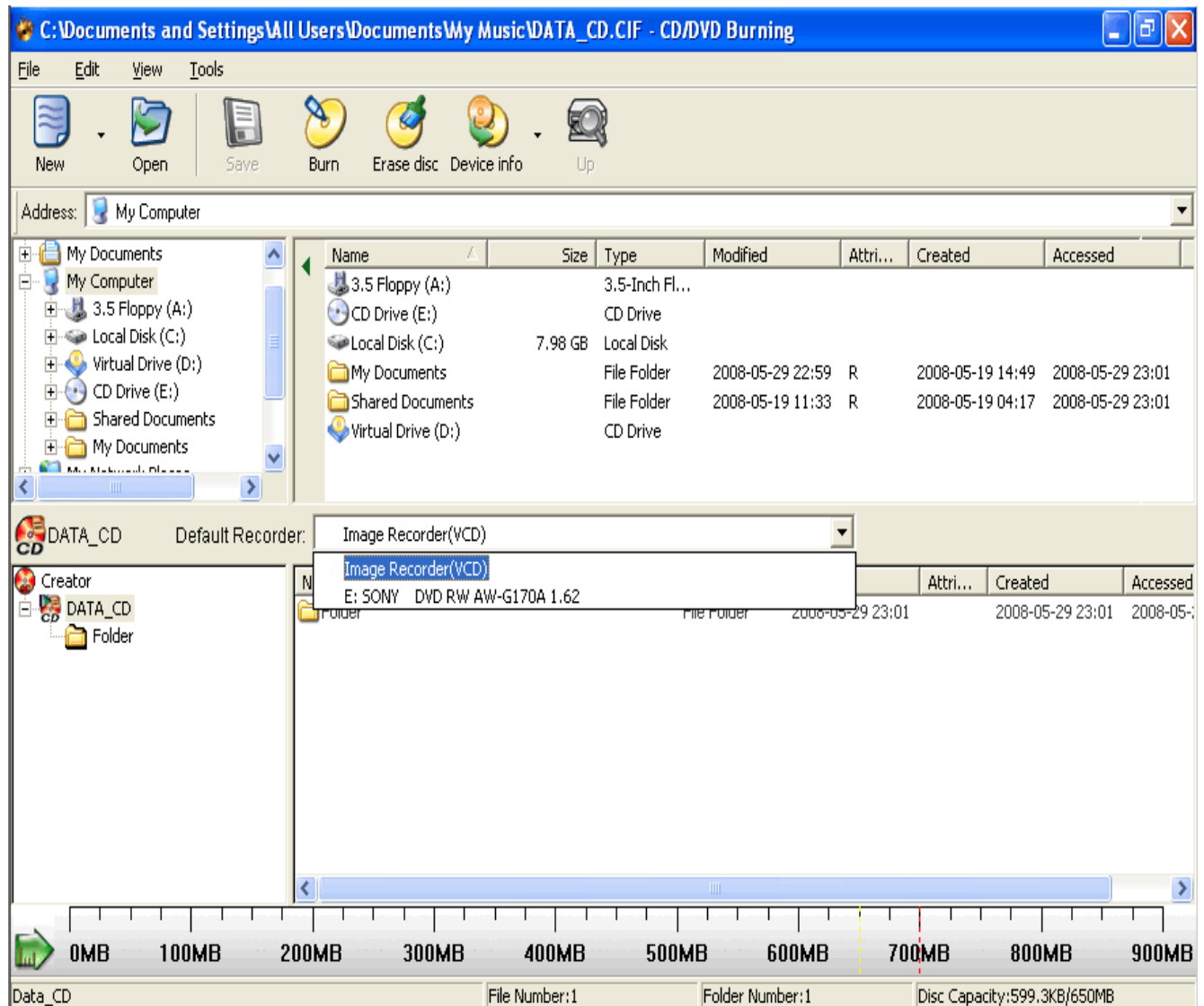
1. Choose a project which you previously created or create a project now (Details refer to [3.2.2.2](#))
2. Select the project you want to customize.



3. Click "**open**". Customize the files or folders.

4. Right click in the project pane, you can add, delete and rename the files to customize the virtual CD.

5. After customization is complete, choose the default location. There are two conditions for you to choose which are:



a. If you prefer to burn the project to an actual CD, you can choose the name of your drive.

b. If you prefer to burn it as an image to a location on your computer, choose "image recorder (VCD)".

6. Click "**burn**" to begin building the image.

### 3.2.4 Custom virtual CD

After creating the image, you may customize CD covers by adding or editing the pictures, the way you want it. The utility enables you to easily find the virtual CD you want to access.

1. Select virtual CD that you will customize in the cabinet.
2. Click the small triangle to the right of the **views** button, then click **Cover view**.
3. Right click the virtual CD that you plan to edit, select **Edit CD/DVD artwork**.
4. Select the covers from your specified location.
5. Click **Open**.



### Tip

The edited covers can help to differentiate the virtual CDs from one another.

### 3.2.5 Conversion between an ISO 9660 image file and a VCD file

You may convert an ISO 9660 image file into a VCD file as well as convert a VCD file into an ISO 9660 image file.

**Step 1** Select **File** on the menu bar, then select **Convert** from the drop menu to open the Convert file window.

**Step 2** Click the **Browse** button to open the Windows file browser.



**Step 3** Select the ISO/VCD file you want to convert, then select **Open** to continue.

**Step 4** Select **Convert** to start the conversion.



#### Note

Audio VCD, DVD and compressed VCD file cant convert into ISO file.

## 3.3 VirtualDrive CD/DVD/Blu-ray Burning Program

VirtualDrive® combines the functions of CD/DVD/Blu-ray emulation software with CD/DVD/Blu-ray burning capabilities. It allows users to copy CD/DVD/Blu-ray images from the hard disk to a recordable medium.

### 3.3.1 Burn CD/DVD/Blu-Ray from a Virtual CD

Create a CD/DVD/Blu-Ray which can protect all types of files and folders and is available in all supported windows systems.

1. Insert a recordable Disc into a rewritable drive.
2. Click **Burn** in the upside of the interface and select **Burn CD/DVD/Blu-Ray from a virtual CD**.
3. Click the browse button  to select an Image file you want to burn and click **Next**.
4. Entering the burning setup of the new Image in the description box, you can choose the following option to custom it

**Device information:** you may find details about your drive

**Buffer underrun protection :** When system resource is not enough, the feature can protect the CD that is recording and prevent burning failure.

**"Close CD"** : the CD you record will stop adding data

**Verify data:** make sure the data on the CD is correct

**Number of copies:** you can choose the number of copies to make based on your demand

5. Click **Burn** to begin building the Image on actual CD.

### 3.3.2 Burn a Custom CD/DVD/Blu-ray Disc

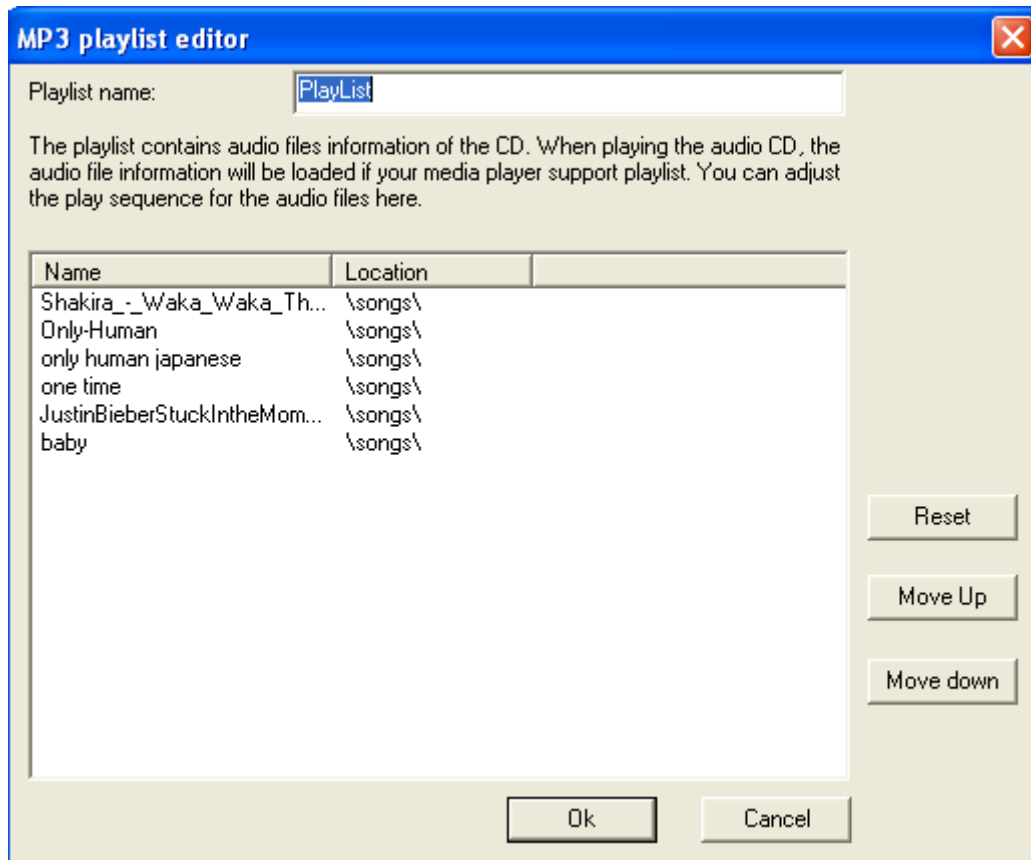
You can create a CD/DVD/Blu-ray in which you can customize the type of files or folders based on your preference and which files and folders are available in all windows systems

1. Click " **Burn a custom CD/DVD/Blu-ray Disc** ".
2. Select Files and Folders you prefer to add to the Project (details refer to [3.2.2.2](#))
3. Right click in the project pane. You may add, delete and rename the files to customize the virtual CD.
4. After customization is complete, choose the default location. There are two options for you to choose:
  - a. If you would like to directly burn the project to an actual CD, you can choose the name of your drive
  - b.If you would like to burn the project as an image to a preferred location on the computer, choose "image recorder (VCD)".
5. Click "burn" to begin building the image.

### 3.3.3 Burn MP3 files onto a CD/DVD/Blu-ray Disc

Burn all your collective MP3 files onto a CD/DVD/Blu-ray disc. The CD/DVD/Blu-ray can be played on any computer or player that supports MP3. It can store more music files than a typical CD.

1. Choose MP3 files or folders and add them to the project.
2. Click "**PlayList**",
3. Enter the playlist editor box. In this box, you can change the name of the image and adjust the turn of songs by moving them up or down.



4. You can save them as a project to the location you want or burn them directly onto the CD.
5. Click "**Burn**" to begin building image.

### 3.3.4 Burn an audio CD

Create a standard music CD which can be played on any audio player. When creating, you can select any music from your hard drive.

1. Select audio files or folders and add them to the project. The program will automatically determine which files are audio files.
2. You can save them as the project to the location where you want or burn them directly into the CD. ([3.3.5](#))
3. Click "**burn**" to begin building image.

**Tip**

If you burn the **WAVE** files to audios, it is recommended to use files of WAV Digitization Quality, 44.1 K, 16-bit sound depth (bit rate=705 kbps).

### 3.3.5 Burn a CD/DVD/Blu-ray Disc from a Project

1. Click **Burn -Burn a CD/DVD/Blu-ray Disc from a Project** or Click the small triangle to the right of the **Burn** button, then select **Burn a CD/DVD/Blu-ray Disc from a Project**.
2. A pop up box will appear. Choose which project to burn.
3. Before burning, there are two default recorders for you to choose:

**If you would like to directly burn the project to an actual CD, set the default recorder to be hard drive.**

- a. Insert a recordable CD into the drive.
- b. Click the **Burn** button in the optional menu.
- c. The burning setup box pops up and you can custom it by following options.

**Device information:** you may find details about your drive

**Buffer underrun protection :** When system resource is not enough, the feature can protect the CD that is recording and prevent burning failure.

**"Close CD":** the CD you record will stop adding data.

**Verify data:** make sure the data on CD is correct.

**Number of copies:** you can choose the number of copies to make based on your demand.

- d. Click **burn**.

**If you would like to burn it as an image to a preferred location on the computer, choose "image recorder (VCD)" as the default recorder.**

- a. Click "**Burn**"
- b. Enter a description of the new Image in the description box. Click the browse button to set an image name for your VCD file and save it to the default location C:
- c. A dialog box will display the attributes of the Image that will be created.

d. Click **Next**.

e. Enter the option box.

**Description:**define the file type

**Author:** Enter the name of the CDs publisher or author (i.e., FarStone Technology).

**Comments:** The comments are the descriptions of the image.

(Optional) You can set a password for Image files. The password will be required if you attempt to insert the Image or view the content of the Image.

(Optional) If the CD does not have an Auto-run file, you can specify a program to run it when the Image is inserted.

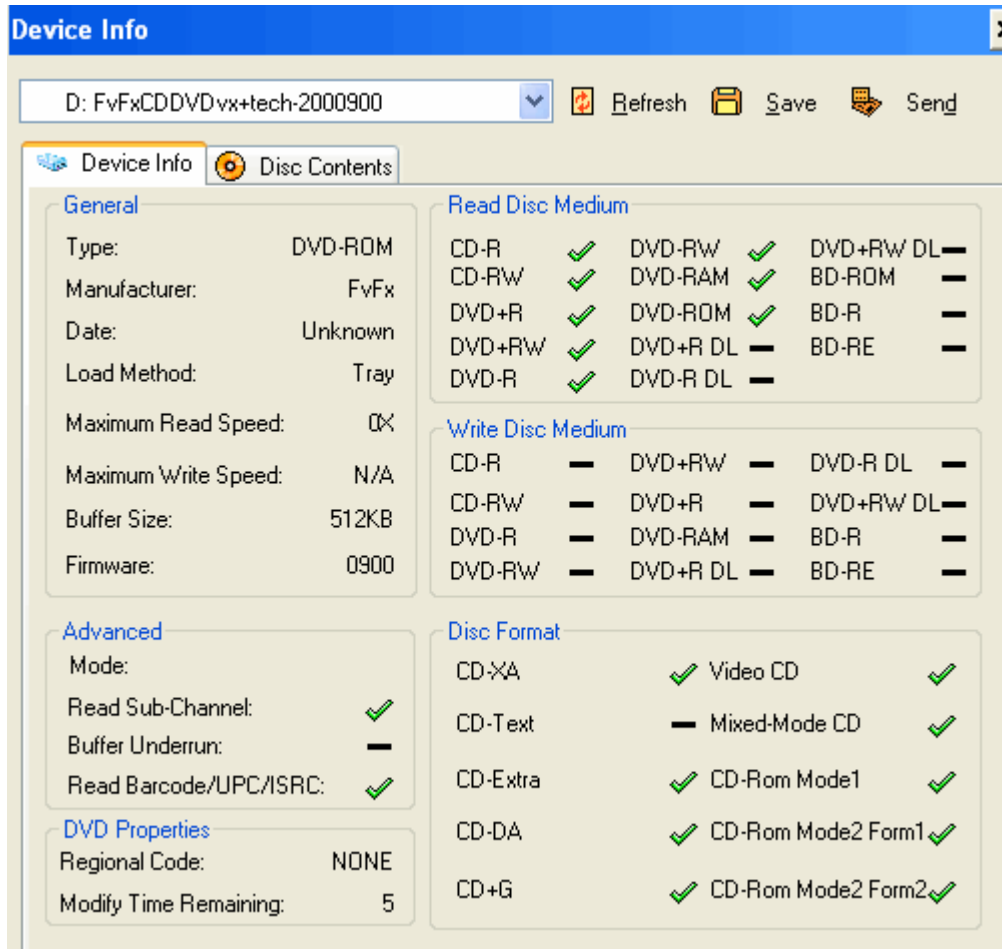
Using data compression will save hard drive space but will also require more time to build the Image.

f. Click "**Burn**" to begin building image.

### 3.3.6 Viewing Device Info

The **Device Info** provides the detailed information of the installed CD/DVD device and the inserted CD/DVD.

Select **Tools** from the VirtualDrive menu bar and then select **Device Info** from the dropdown menu to display the device information.



There are three buttons on top right side of the Device Info page:

	Refresh current device information.
	Save your current device information as a text file on your hard disk.
	Send an e-mail about your device information to FarStone Technology. This feature will be helpful for users to collect their system information and report it to FarStone technical support when errors occur when they are using VirtualDrive.

## **3.4 Managing VCD access on the VDN Server**

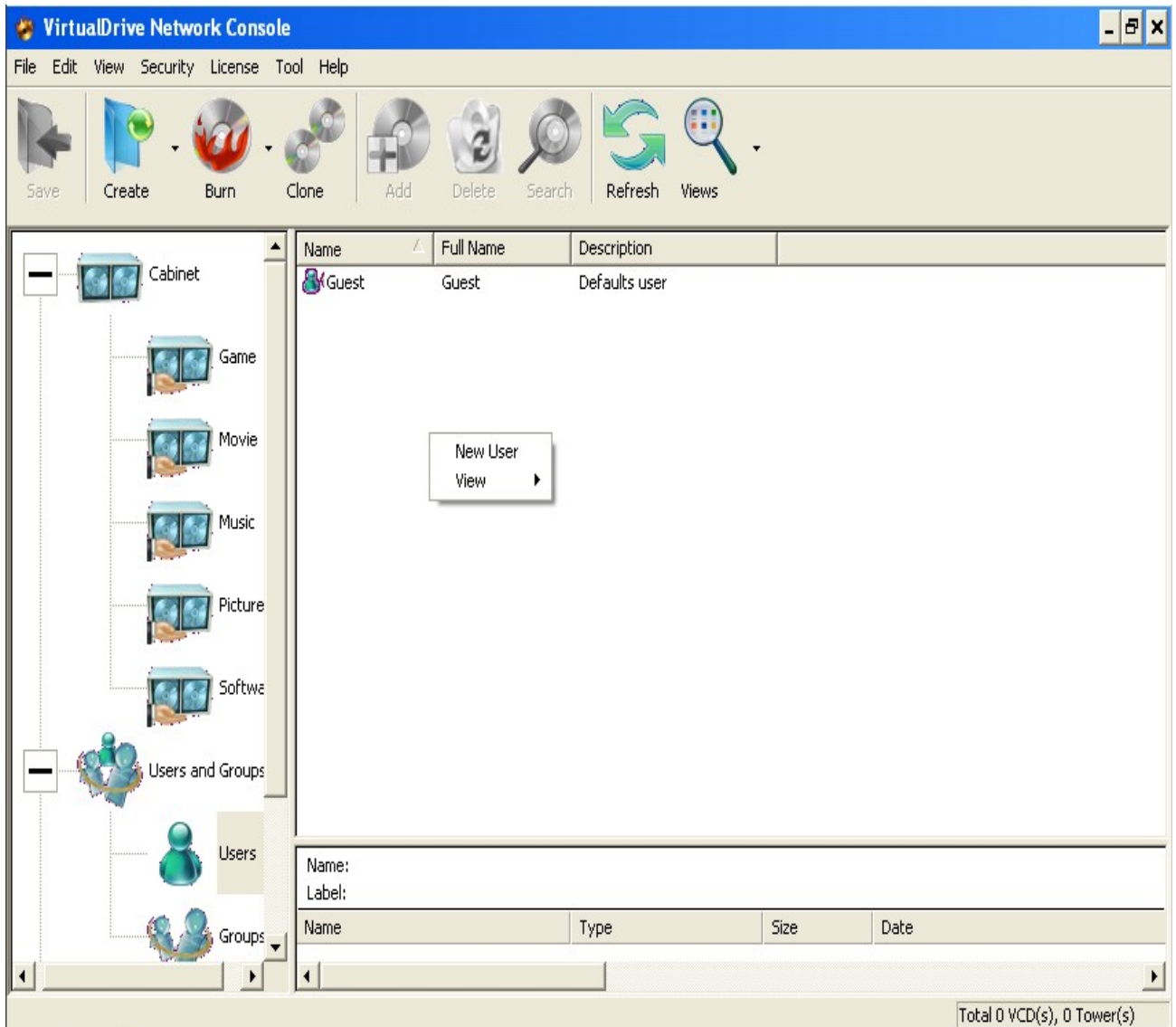
### **3.4.1 Users and Groups - Overview**

A Group can be created to manage multiple users access to a VCD Cabinet.

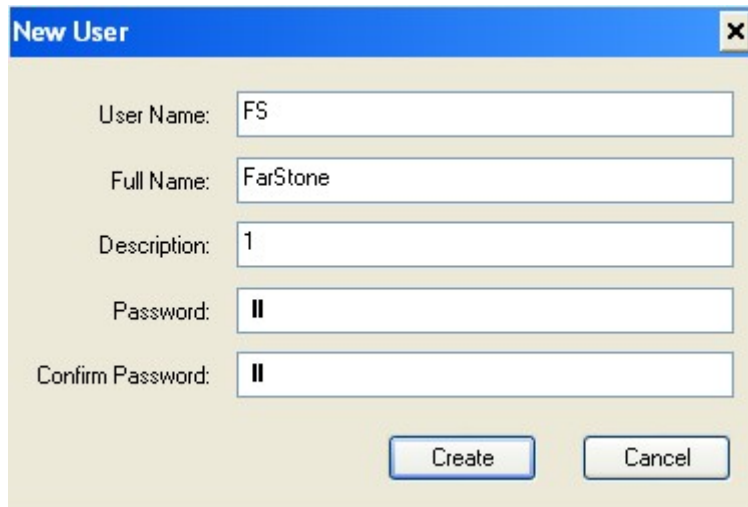
If you use Groups to manage access rights then you must create User Accounts for everyone using VDN and assign them to groups.

#### **3.4.1.1 Adding/Removing Users**

Add a new User by right-clicking in the Users and Groups frame then selecting **New User** from the drop menu to open the New User dialog(Figure below).



Enter the User details and a Password if required.



The image shows a 'New User' dialog box with the following fields and values:

Field	Value
User Name:	FS
Full Name:	FarStone
Description:	1
Password:	
Confirm Password:	

Buttons: Create, Cancel

click **Create** to add the User, or **Cancel** to close the dialog.

Finally, click on **Save** to save the new configuration.



#### Note

No period, blank, or characters as [\ / [ ] : | < > + = )°, ? \*] can be included in the user name.

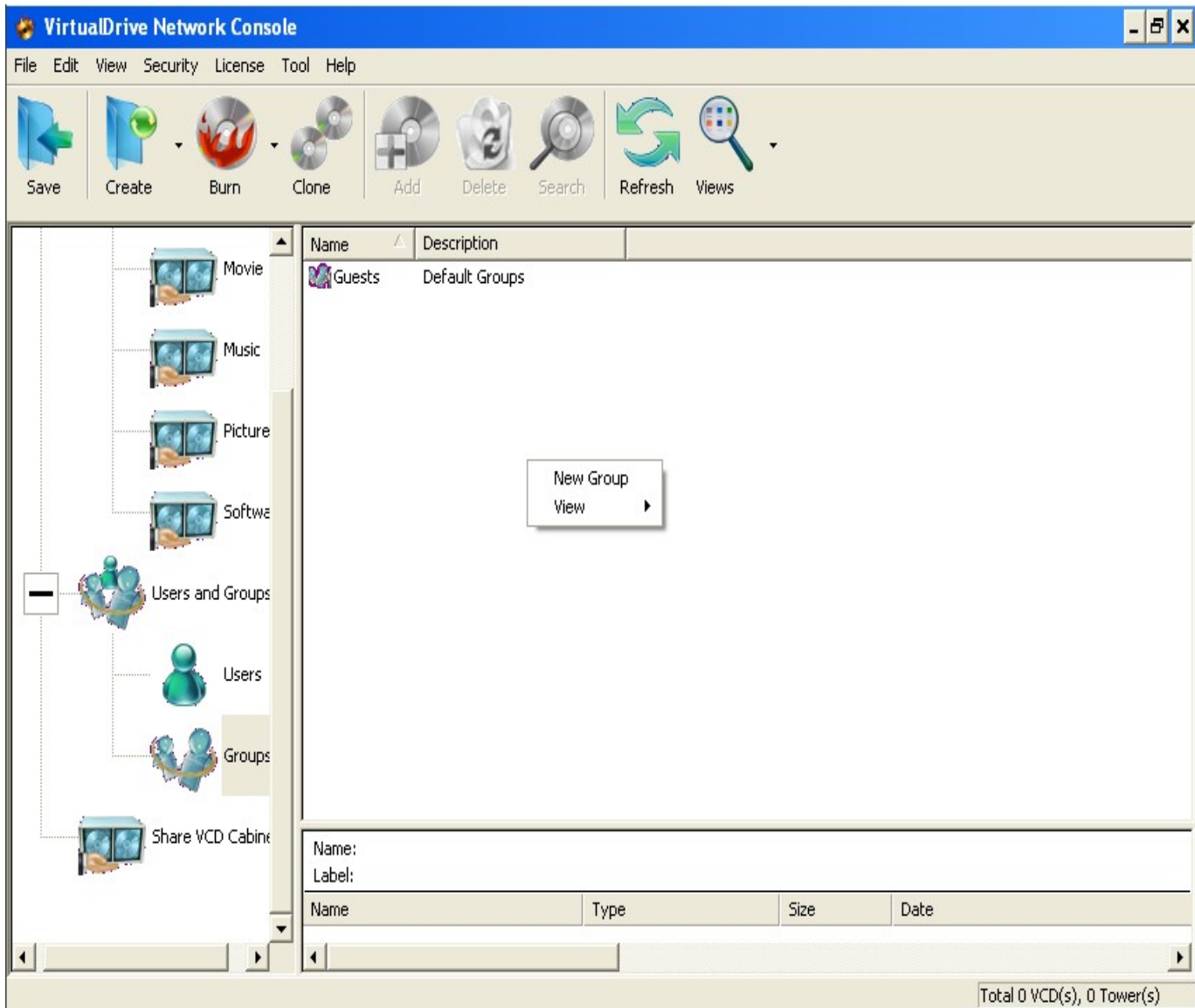
The new user is added into **guests** group at default setting. Please refer to [3.4.1.2](#)

**Adding users to group** if you want to assign users to another group.

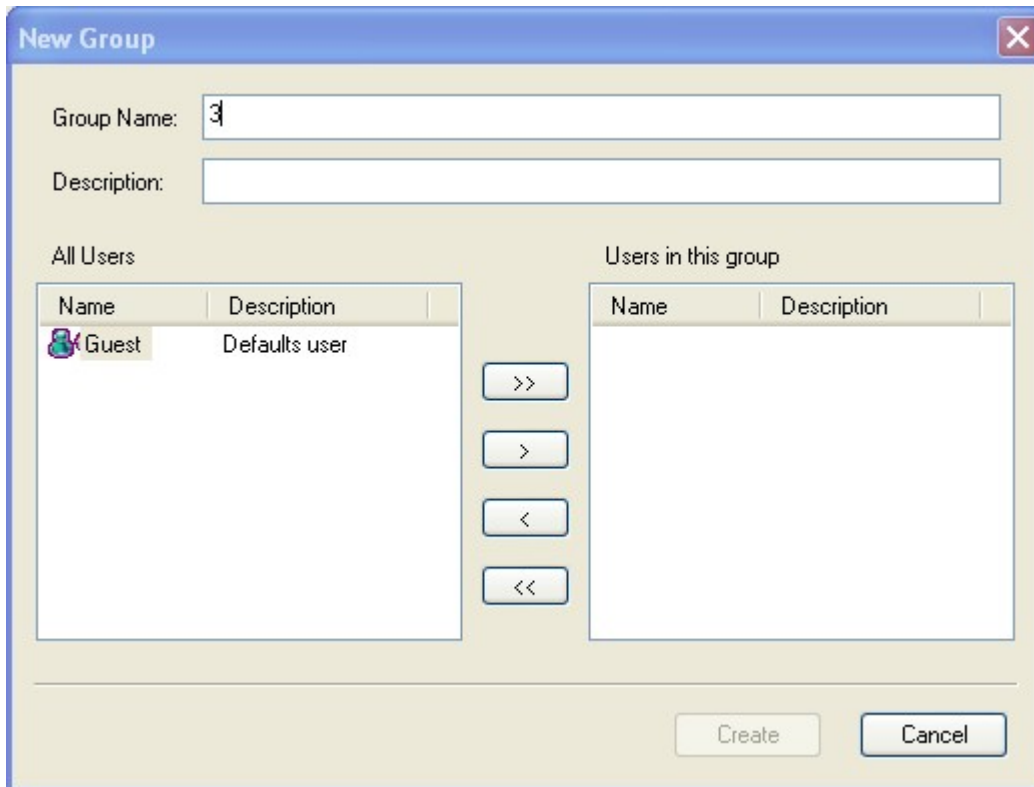
To remove a user select the User Name, right-click and select **Delete** from the popup menu.

#### Adding/Removing Groups

Right-click on the Groups icon and select **New Group** to open New Group dialog box.

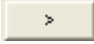
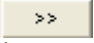
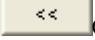
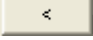


Give the New Group a Name and Description then click on the Create button (figure below).

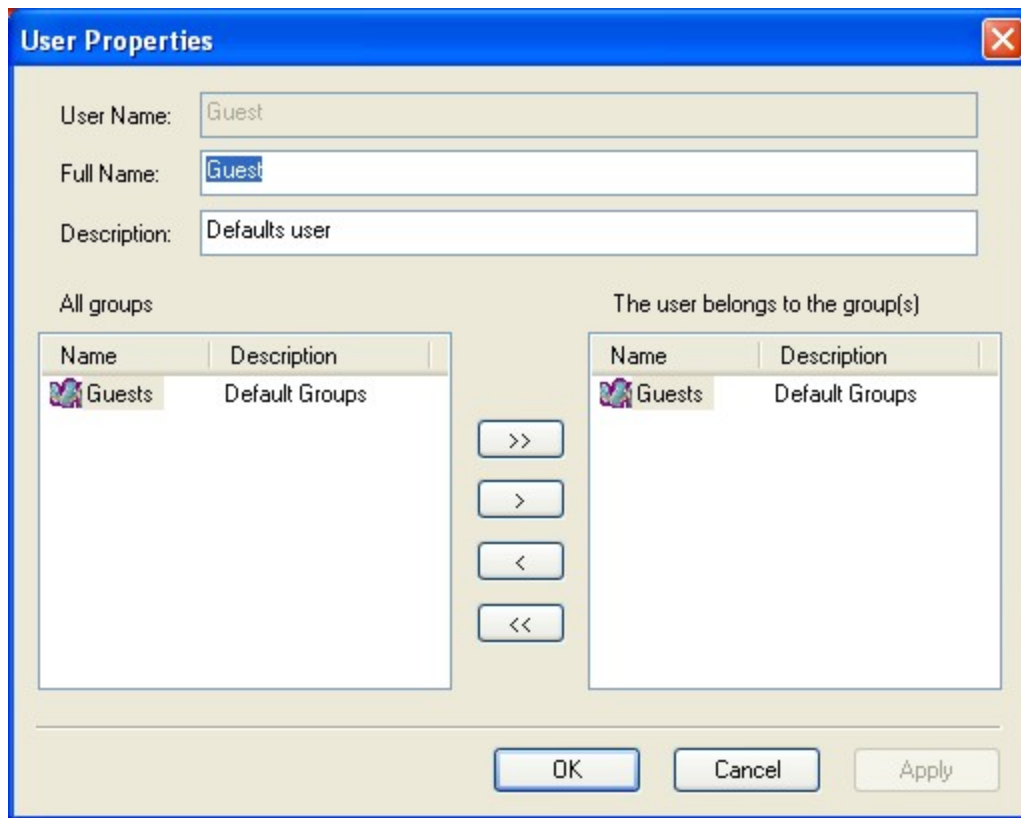


To remove a group, you can either (a) right click the group and select **Delete** from popup menu or (b) select the group and press **Delete** key on keyboard.

### 3.4.1.2 Adding Users to Groups

Select the User Name right-click and select User Properties from the popup menu. In the popup box, you can either assign single user by using the  button or assign all users by clicking on  button to any of the listed Groups. On the contrary, use  or  button to remove users from groups.

You can then use the arrow buttons to assign the User to any of the listed Groups.

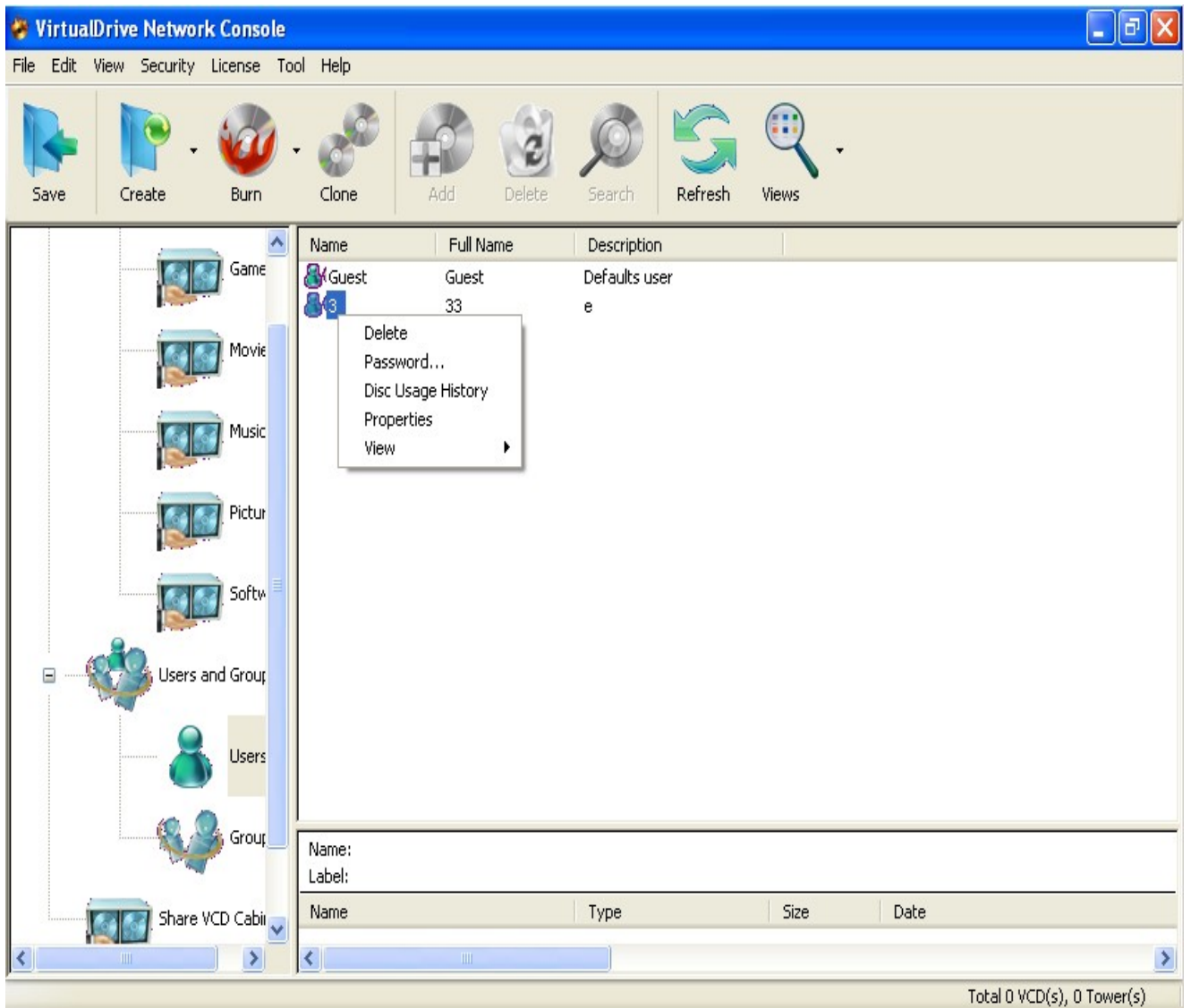


**Note**

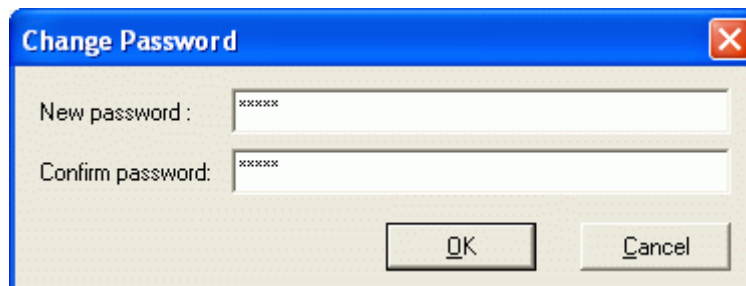
A user in a group has the same access as the group he is subject to.

**Changing a User Password**

Select the user's name, right-click and select **Password** from the popup menu.



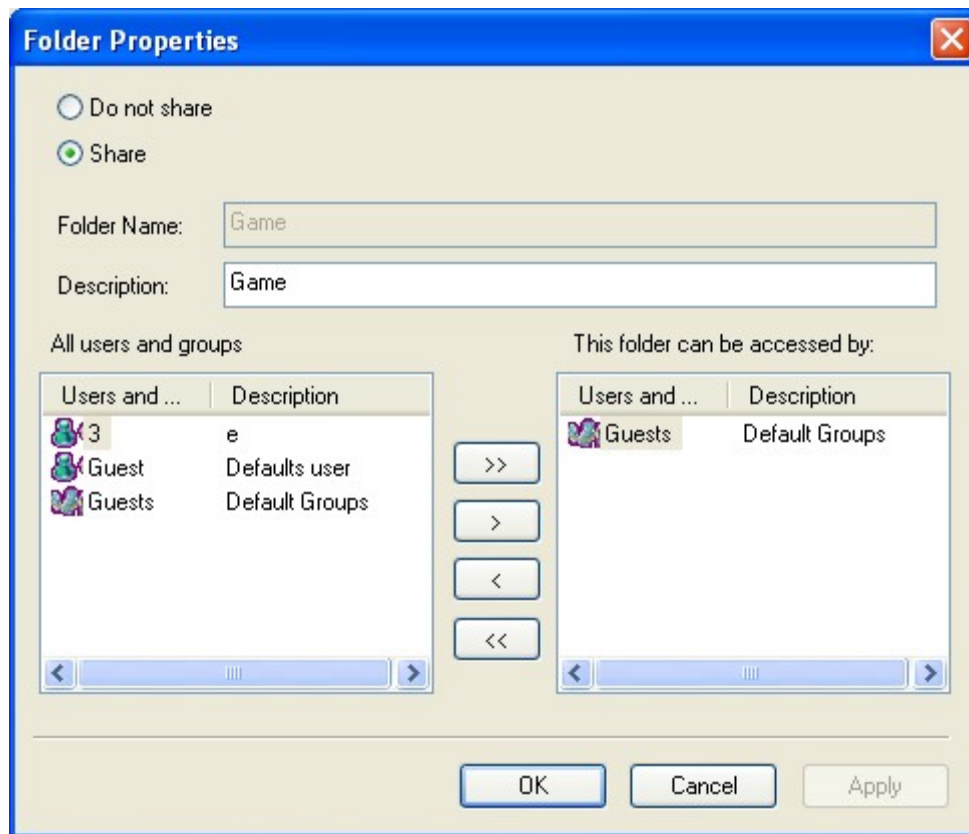
Type the password and confirm it. Click **OK** to finish.



## 3.4.2 Sharing VCD Folder

Users have access to the VCD files in VCD folders only if they have access privilege assigned by VirtualDrive Console.

To share a VCD cabinet to users, select a VCD cabinet, select **File -> Share** or right click on it and select **Sharing**.



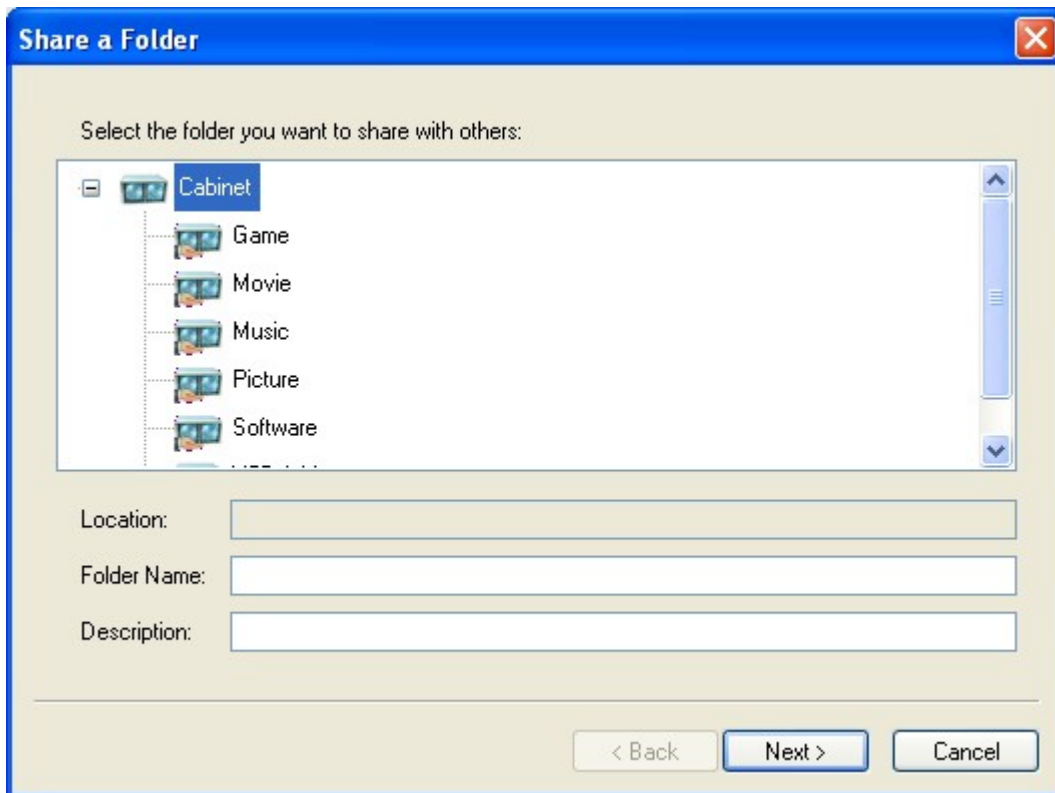
You can share the cabinet with users and groups by adding or removing them from right pane of the Window.

### 3.4.2.1 New Sharing

Right click on **share VCD Cabinet** in left pane of VirtualDrive Console, select **new sharing** from the popup menu to open select folder window.



Select a folder in this window and click **Next** to enter the next step.



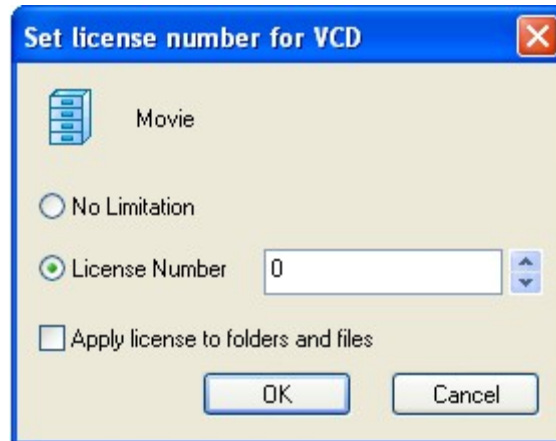
If you want to share this folder with users or groups, add them into the right pane of this window.

### 3.4.3 VCD License

By using VCD license, you can specify how many users may access VCD files at one time.

### 3.4.3.1 Set License for a VCD File

You can set the license for a VCD file by (a) Selecting a VCD file and pointing to **License->Set License** on the file menu or (b) Right clicking on a VCD and clicking **Set License** from the drop menu, either method will open the license window (figure below).

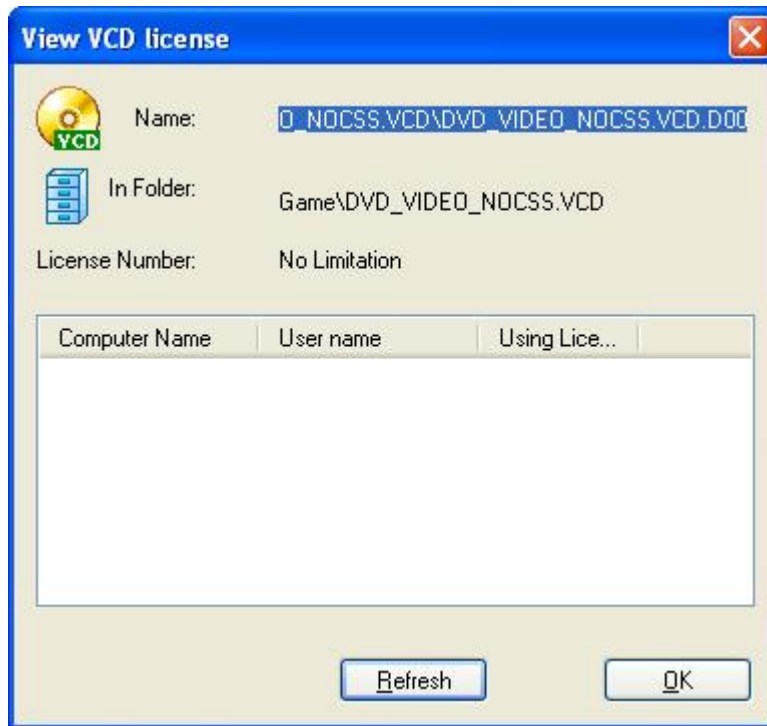


The default setting is **NO Limitation**. You may change the license count by entering a number in the blank box.

AS well, you may set VCD license number for a VCD folder and VCDs in it by repeating the process.

### 3.4.3.2 View License

You may inspect current license usage of a VCD file by (a) Selecting a VCD and pointing to **License->View License** on the file menu or (b) Right clicking on a VCD and clicking **View License** from the drop menu, either method shall open the window as below.



VCD license information is displayed in this window, includes: VCD license number, the location of this VCD and who are using it.

## 3.5 Managing VCDs in the VDN Server

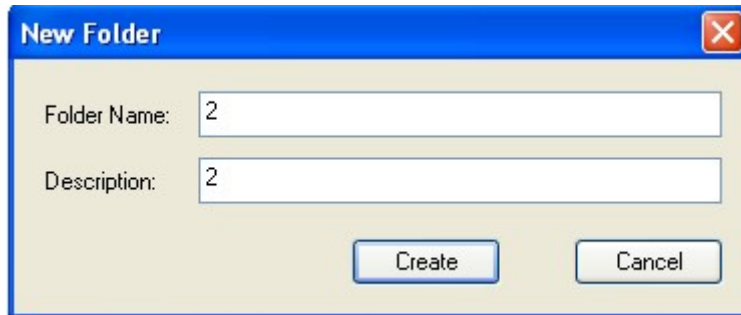
### 3.5.1 Adding VCD folders (CD Jukebox)

Before VCDs can be added to the VDN Server, a Folder or CD Jukebox must first be created to hold the VCDs.

**Step 1** Click on **Cabinet** located on the left side of the VDN Console program window. Then right click on the blank space in right panel of the VDN Console window. A popup menu will be displayed. Select "**New Cabinet**".

(The same function can also run from the Menu bar by selecting **New** then **New Cabinet**)

**Step 2** Type in the new Cabinet Name and Description then click **Create** to add the folder. When you have finished adding new folders, click **Cancel** to close the dialog.



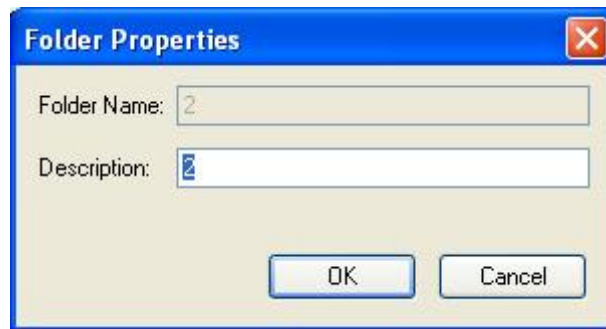
**Step 3** Save the new VDN Folder Configuration



Save the new configuration by clicking on the **"Save"** button or click **"File"** on the Menu bar and select **"Save"**. VDN Clients will see the new configuration only after "Refreshing" their screen or restarting the Client program.

### 3.5.2 Changing a VDN Folder Description

Open the Folder Properties dialog by right-clicking on the folder and selecting **Properties**. Or, go to **File -> VCD Folder -> Properties** from the **File** menu.



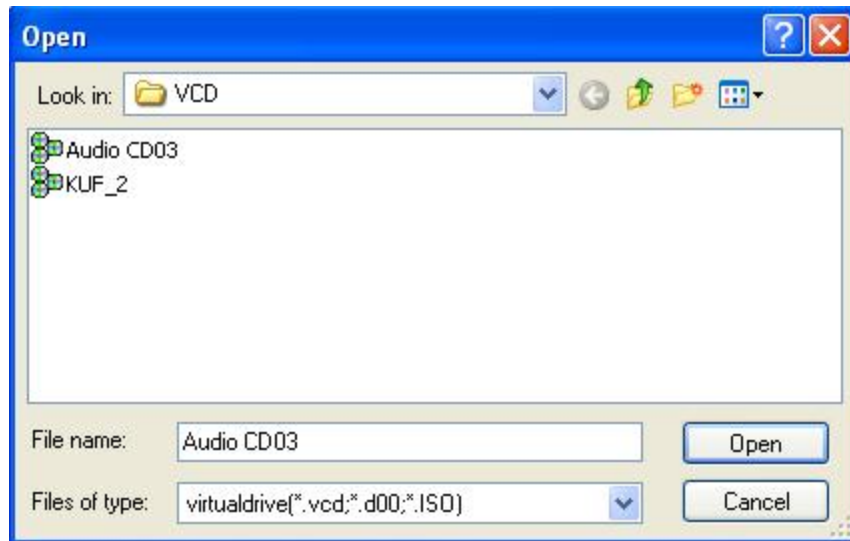
The Folder Properties dialog only allows the editing of the VCD folder description.

### 3.5.3 Adding VCDs to a VCD Folder

**Step 1** To add VCDs to a VCD folder, first click on the VCD Folder name listed on the left side of the VDN Console program window. Then right click on the blank space in right panel of the VDN Console window. A popup menu will be displayed. Select **"Add VCD"**.

(The same function can also run from the Menu bar by selecting File then VCD files)

Select the files that you want to add to the VCD folder and then click "**Open**". All of the selected VCD files will be added to the VCD folder.



**Note**

Files selected from the Network Neighborhood are UNC compliant.



**Important !**

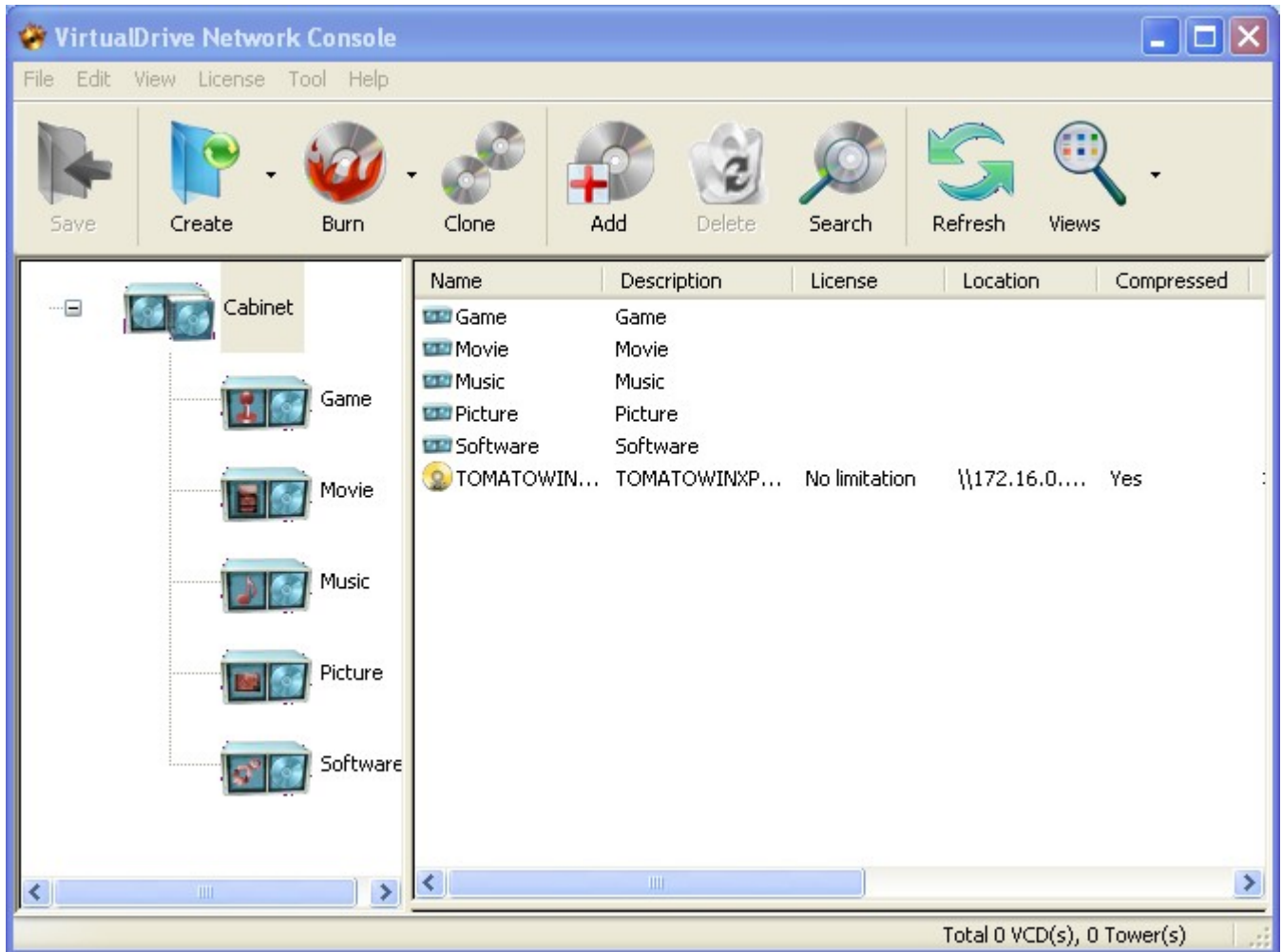
VCDs cannot be added to the VDN server Console from:

- a local drive e.g. C:\vcds\mykids play.vcd or a mapped drive e.g. F:\math1.vcd (while f: is mapped to \\server\vdn)

VCD files must be stored within Shared folders and may be located on different file servers (as in a distributed network system).

### Tips

To add multiple VCD files at a time. Hold down the Ctrl key and click on each VCD to select, or hold the SHIFT down key to select block of VCD files in the file list.



The added VCDs will appear in the Console window.

### Step 2 Save the new VDN Folder Configuration

Save the new configuration by clicking on the **"Save"** button or Click **"File"** on the Menu bar and select **"Save Configuration"**. VDN Clients will see the new configuration only after "Refreshing" their screen or restarting the Client program.

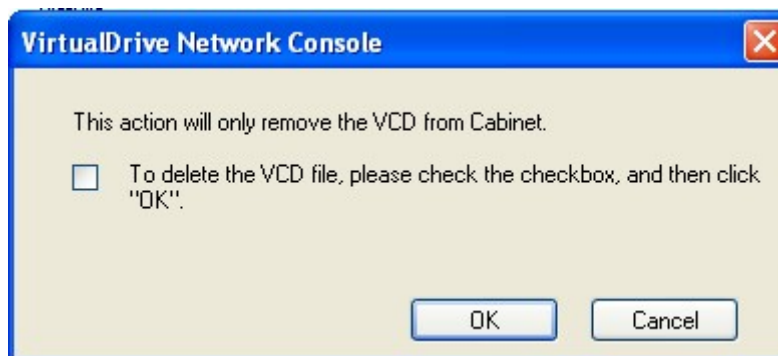


#### Note

The VDN configuration file is stored in the [\\server\vdn\TvConfig.Bny](#). Before updating the configuration file, the VDN Console program will make a backup copy to "\$TvConfig.nnn". VDN maintains backups for the last 4 configurations.

### 3.5.4 Deleting a VCD Icon or VCD File

Right click on the VCD icon and select "Delete" to open the popup menu shown below.



Click **OK** to Delete the VCD icon from the VDN Console. Only the VCD icon displayed in the VDN Console is removed from the VDN CD server, the VCD file remains on the network and may be added to the VDN Server again.

To delete the VCD file and its icon check the **Delete VCD files in the disk** then click **OK**. This will remove the VCD icon from the VDN server and VCD file from the network.

### 3.5.5 VCD properties & Custom Auto-run Function

To view a VCD's properties, right click on that VCD's icon and select "**Properties**" from the drop menu to open the VCD Properties dialog box (shown below). A VCD's description can be edited from here.

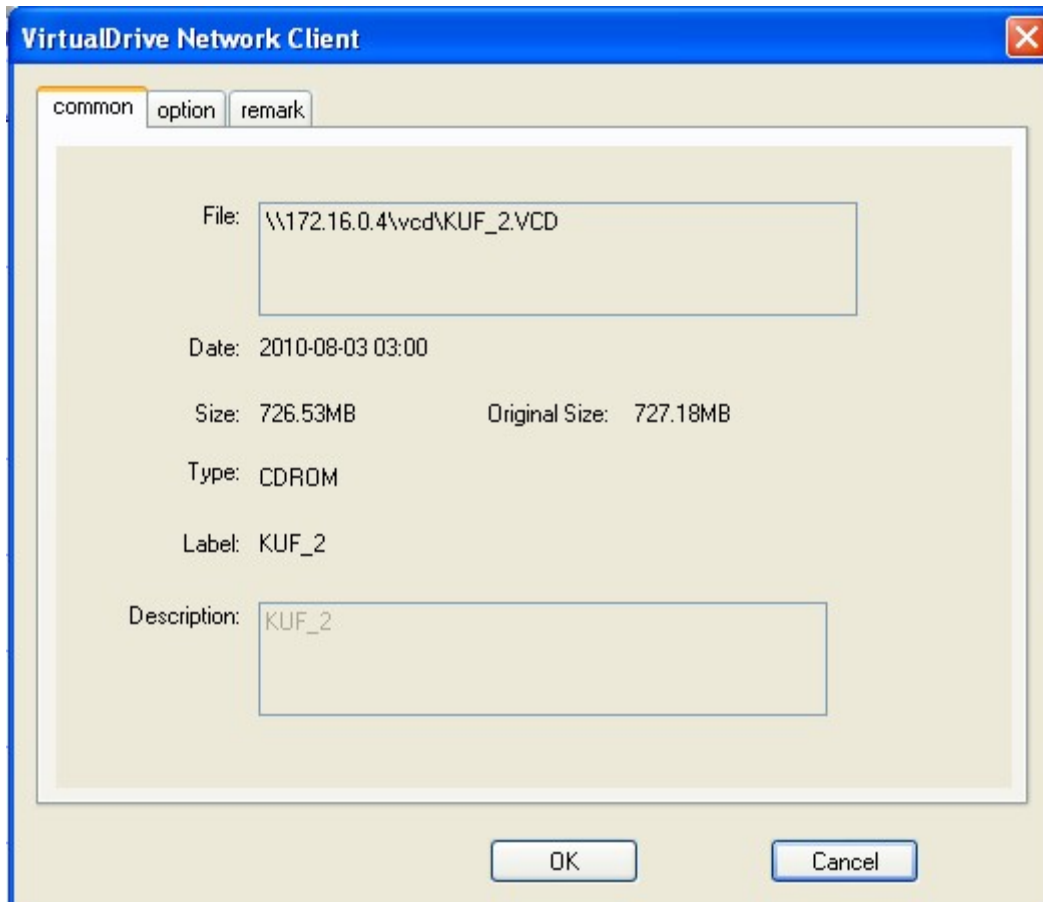
Additionally, VDN provides a comprehensive way to startup VCDs created from CD-ROMs with no built-in Autorun feature.

To set up an Autorun function for a VCD, simply follow these steps:

**Step 1** Check the "Run the command listed below when VCD is inserted"

**Step 2** Fill out the command line to include the path and the name of the program file to be run.

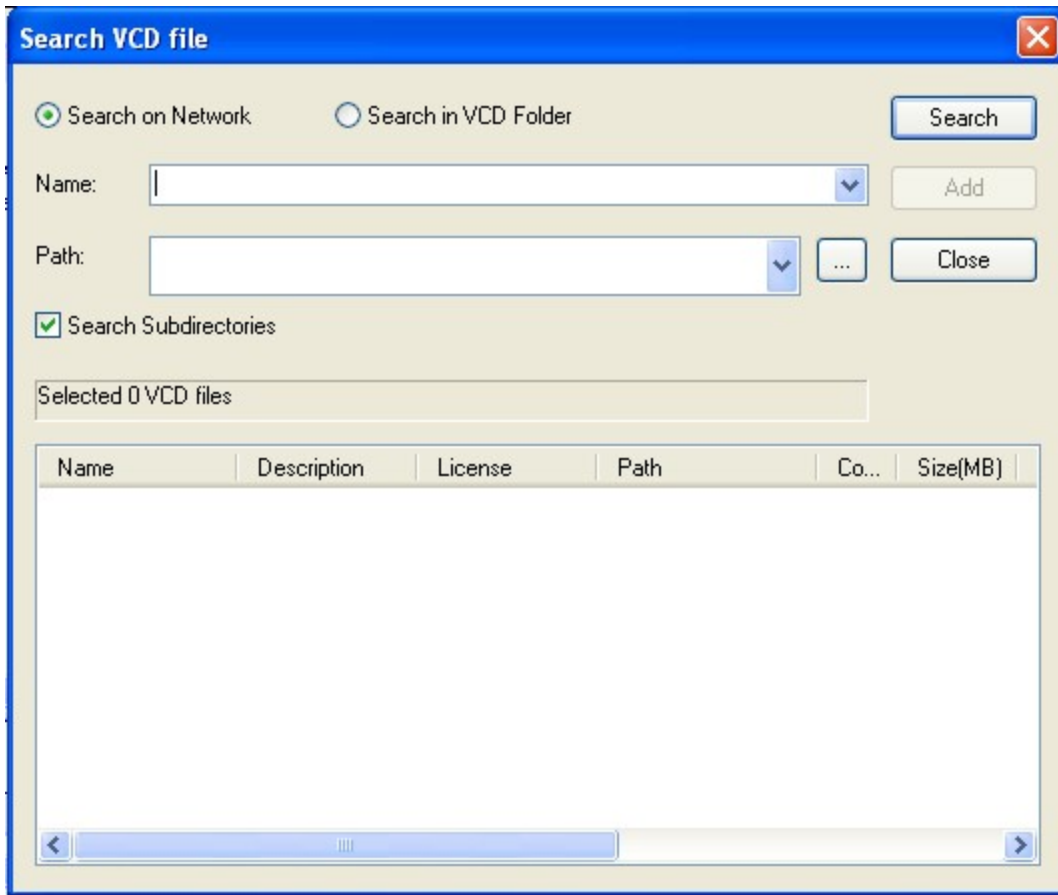
e.g. "\\setup.exe" or "\\mydocFolder1\myFile.doc" or "\\mydocFolder1\myPage.htm"

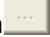


### 3.5.6 Searching VCD

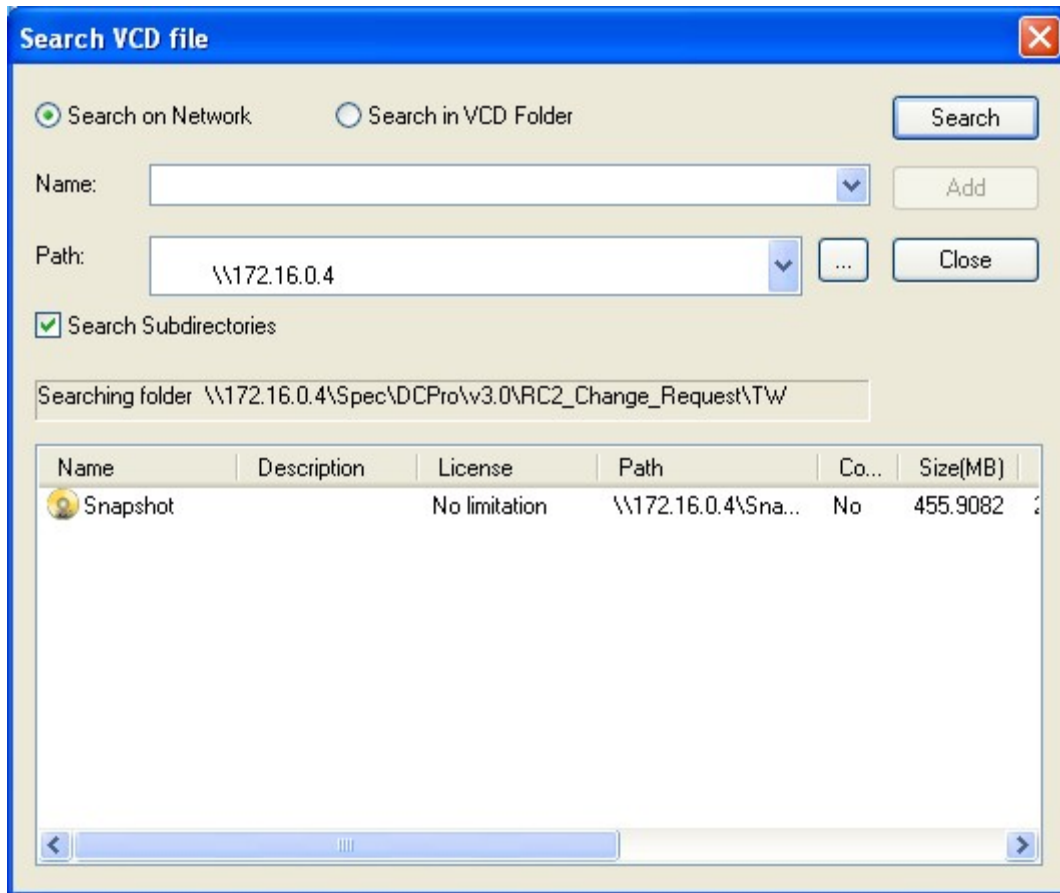


**Step1** Select **Search** button or select **File** from menu bar, then Search VCD from the drop menu to open Search VCD Box.



Select VCD folder in **Path** drop menu or browse for folders by clicking on  button.

Click on **Search**, the files are being searched will be displayed in the window. Select a certain file or multiple files (by holding down CTRL) you have found, and click **Add** to put them into a folder (figure below).



**Path:** If "**Search in VCD folder**" radio box is selected, you can select a CD folder by clicking on  button or in search path box (figure 3-4-6a); you may browse for folder from network drives by selecting "**Search on Network**" (figure 3-4-6b).

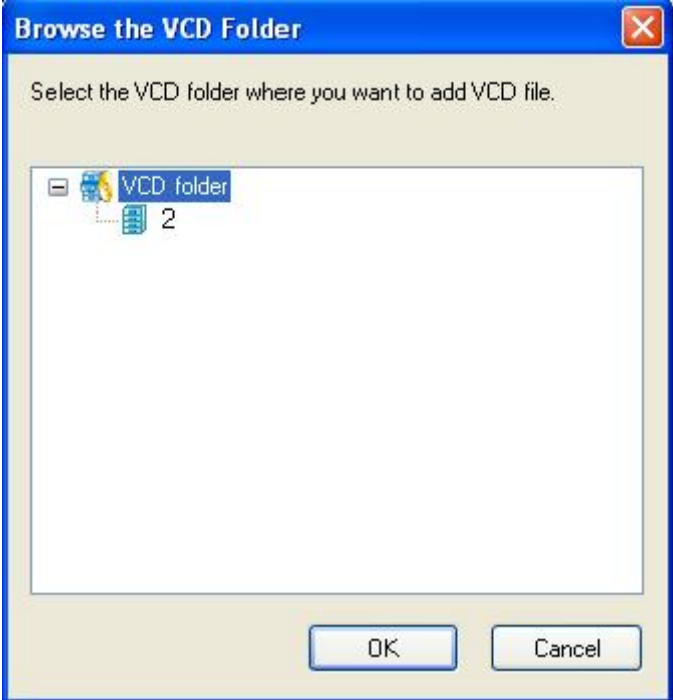


figure 3-4-6a



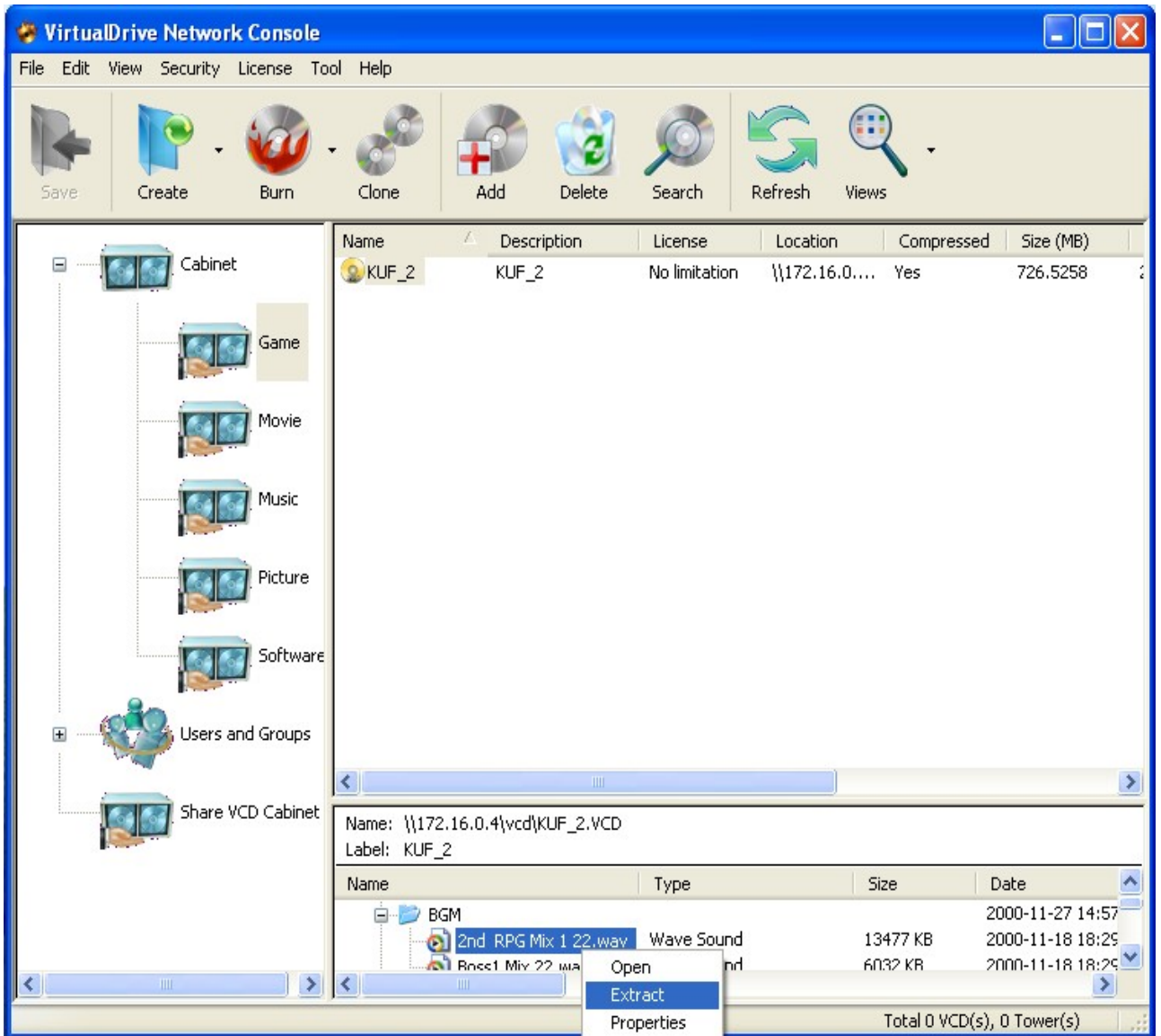
figure 3-4-6b

### 3.5.7 Software information

Select **Help** and then **About VirtualDrive Network Console** from the drop menu, the popup window will display the information about software license and version.

### 3.5.8 Extracting files from VCD

Users can access files from the VCDs without inserting them into the virtual drive. Click on a VCD icon in VirtualDrive™ tray, all its contents will be displayed in the bottom-right frame. Right click on the selected file and select **Extract** from the drop down menu.



Specify a folder to save the extracted file.



## 3.6 Viewing Client VCD Usage

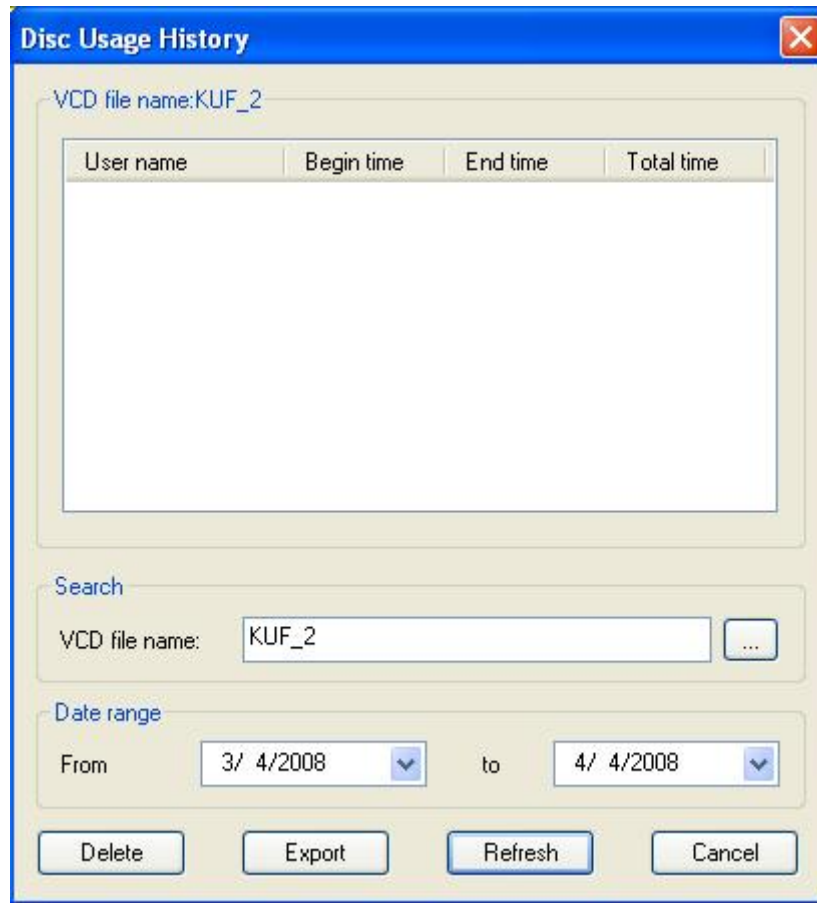
### 3.6.1 Viewing VCD Usage

To view the usage of any particular VCD, click on the VCD name to select it then right-click and select **Disc Usage History** or click on **File-> Disc Usage History** to open the Statistic dialog. (shown below)



#### Note

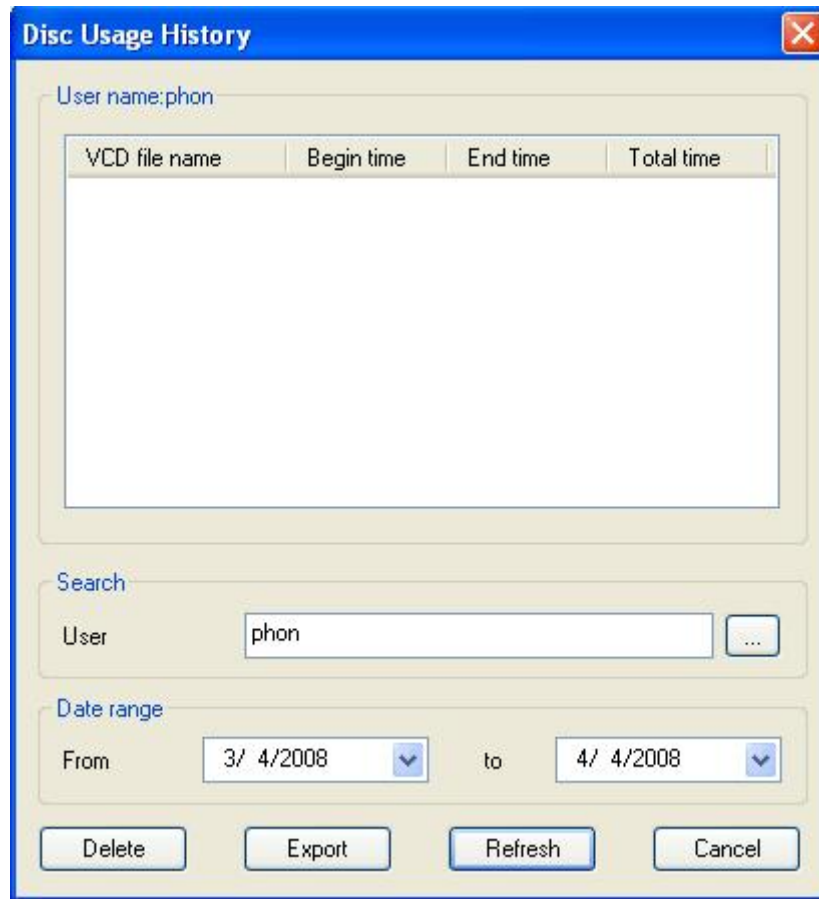
Statistic function can take effect only after enables ->View->Settings->Other->**Verify the authority for VCD folder** in VDN Console.



Click on the **Refresh** button to Refresh the dialog and display the network usage statistics.

### 3.6.2 Viewing User Statistics

To view the statistics of any user, click on the name to select it then right-click and select **Disc Usage History** or click on **File-> Disc Usage History** to open the dialog (shown below).



You may view the usage status in a period of time by appointing the date range in the drop list.

To back up the statistic result, click on **Export** and give a path to save the backup file.

## 3.7 Backing up VCD List

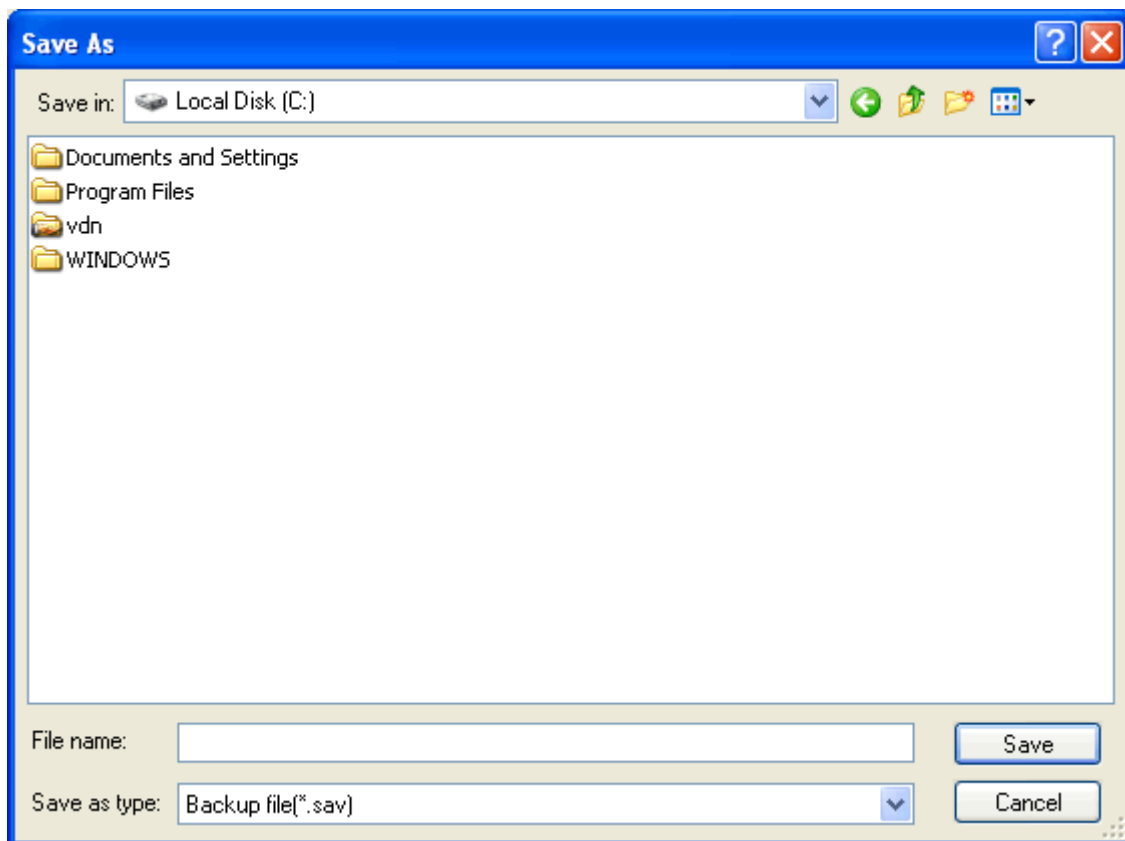
### 3.7.1 Backing Up VCD list

Using this tool you can back up the information of the current VCD list in VirtualDrive and restore it at any time you like.

Select **File** from VirtualDrive Manager menu, then **Backup** to save the VCD list in the hard disk.

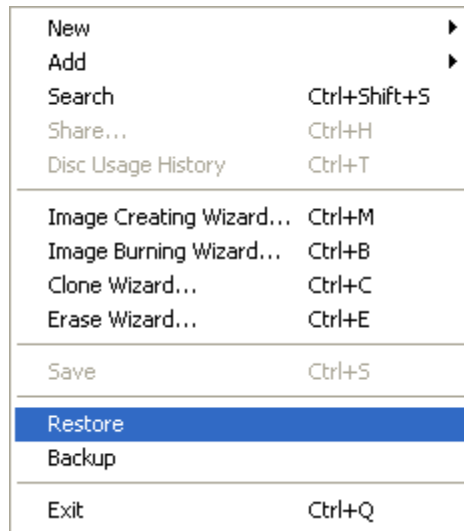
New	▶
Add	▶
Search	Ctrl+Shift+S
Share...	Ctrl+H
Disc Usage History	Ctrl+T
<hr/>	
Image Creating Wizard...	Ctrl+M
Image Burning Wizard...	Ctrl+B
Clone Wizard...	Ctrl+C
Erase Wizard...	Ctrl+E
<hr/>	
Save	Ctrl+S
<hr/>	
Restore	
Backup	
<hr/>	
Exit	Ctrl+Q

Enter a location to save the backup file (\*.vdi).

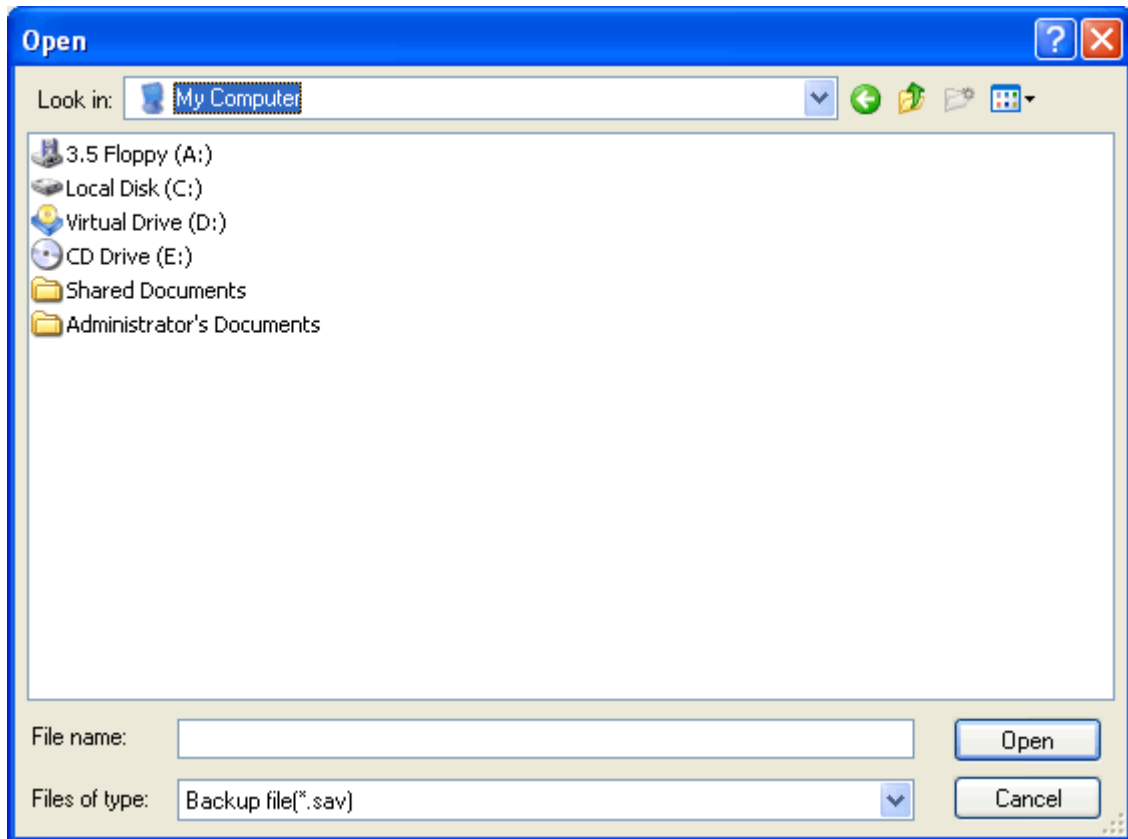


### 3.7.2 Restoring VCD List

Select **File** from VirtualDrive Manager menu, select **Restore**.



Select the VCD list you want to restore and select **Open**.



### 3.8 Cloning CD/DVD or BD

You can make an identical copy of an existing CD/DVD/BD onto another recordable disc.

In the Main Console, select **Clone CD/DVD/Blu-ray**. The way you clone your disc will depend on the number of CD/DVD/BD drives connected to your computer.

#### Cloning a Disc with Two CD/DVD or BD Drives

Insert a blank disc into one CD/DVD/BD recorder, and then insert the source disc into your other CD/DVD/BD-ROM drive.

From the drop-down menu in the dialog box, select the drive containing the source disc.

Other options in this dialog box include:

Disc Information: View disc type, number of sectors, disc size, time, sessions, tracks, start sector, and end sector of the source disc.

Read Speed: Select a read speed from the dropdown menu. It is recommended to choose the Best Speed option.

Ignore read errors: Checking this box will set the burner to ignore read errors from the source disc.

On-the-fly: Checking this option enables quick cloning.



#### Note

If the on-the-fly option is checked, data will be taken directly from the source disc and burned on the target disc.

If on-the-fly is not checked, data from the source disc will first be compressed as an Image and stored in a temporary files folder. The original contents of the source disc will then be burned to the target disc.

This option is not available if there is only one CD/DVD or BD drive in your computer.

Click **Next** to display a dialog box. Choose your burning settings and click **Burn**.

#### Cloning a Disc when there is only One CD/DVD Drive

1. Insert the source disc into your CD/DVD-ROM recorder.
2. Select the source disc from the drop-down menu in the dialog box.
3. Choose your burning settings and click **Record** in the dialog box.



#### Note

The next two steps are settings for making an Image.

4. Select a CD/DVD read method. The default read method of "Intelligent Extraction" works with most CD formats. If you know what protection type is used on the CD, you may want to select the **Other Protected CD type** option.

5. Using Data Compression will save hard disc space but will also require a longer build time.

6. Enter a description for the Image in the description field.

**Optional:** If the CD does not have an Auto-run file, you can specify for a program to run it when the Image is inserted into a virtual drive.

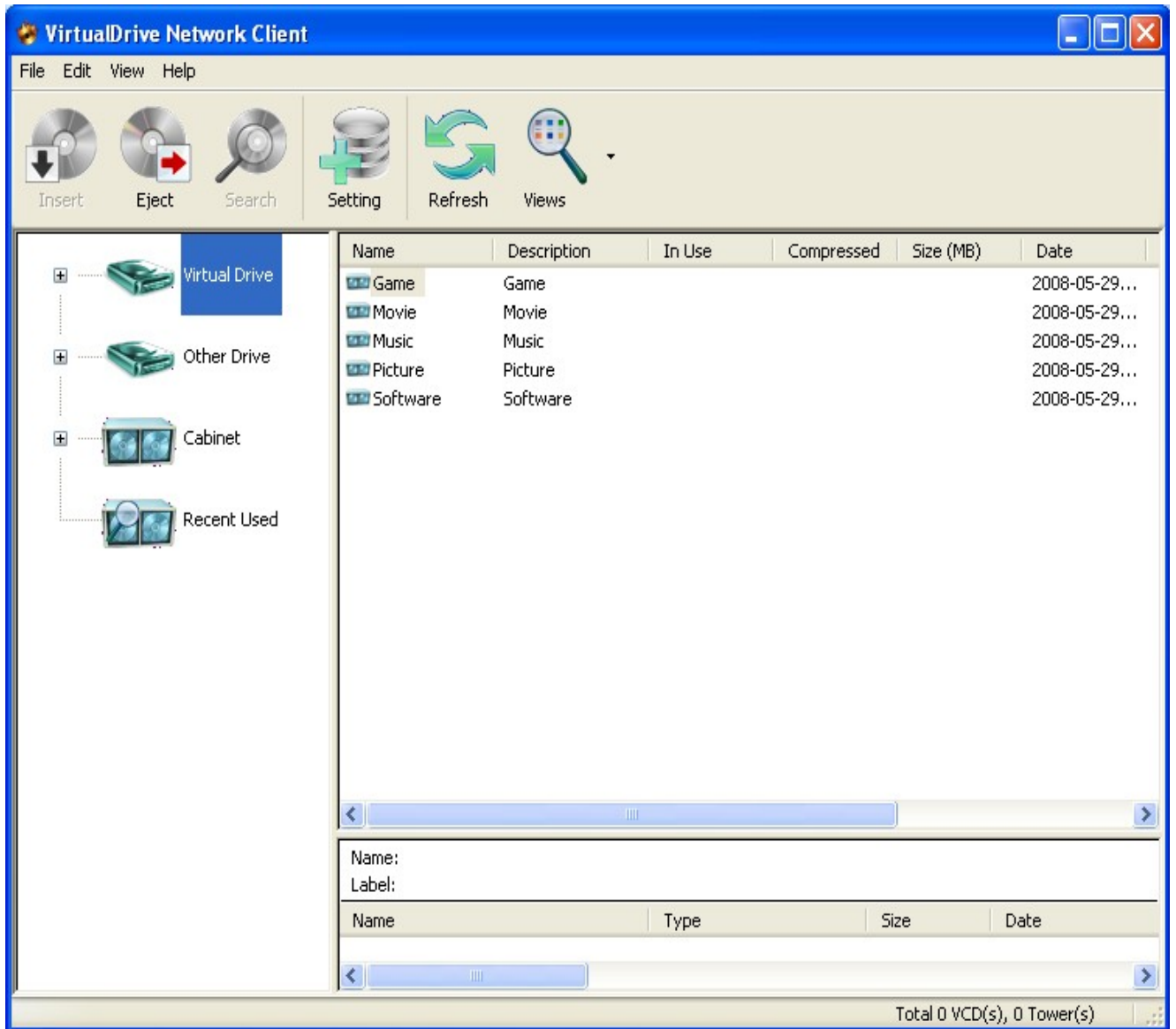
7. Click **Next**. The image of the source disc will begin creating. When complete, the disc will automatically eject.

8. Replace the source disc with a writable disc and click **OK** to continue.

## Chapter 4: Using the VDN Client Program

### 4.1 Starting the VDN Client Program

To launch VDN Client program, click on ->start->programs->VirtualDrive Network->VirtualDrive Network client.

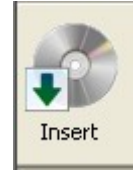


## 4.2 Running Virtual CD-ROMs (VCDs)

There are several methods of inserting a VCD file. If the VCD has Autorun this will be run when the VCD is inserted.

Click the Virtual Drive tab on the right-hand-side of the VDN window to display all Virtual Drives.

Once in this view, there are several methods for Inserting a VCD.



**Method 1** Clicking on the VCD then the "Insert" button will open a list of available drives. Select a drive to insert the VCD.

**Method 2** Double clicking on the VCD icon. will open a list of available VirtualDrives. Select a drive to load the VCD.

(note: If only one VirtualDrive has been created, double-clicking on the VCD will automatically insert the VCD into this drive.)

Note: See VDN Console VDrive.exe feature to create a custom Autorun VCD

**Method 3** Left click on the VCD and with the mouse button still de-pressed, drag the VCD icon onto a Virtual Drive icon.

**Method 4** Highlight a VCD icon and select "insert" from "edit" drop menu.

**Method 5** Select a VCD icon then press "insert" button on keyboard.

**Method 6** Right click on a VCD icon and select "insert" from the popup menu will open a list of available drives. Select a drive to insert the VCD.

## 4.3 Ejecting a VCD

Click the Virtual Drive tab on the right-hand-side of the VDN window to display all Virtual Drives.

Once in this view, there are several methods to Eject a VCD.

**Method 1** Right click on the inserted VCD and select "Eject".



**Method 2** Click on the VCD then click on the "Eject" button.

**Method 3** Click on the icon and with the mouse button still de-pressed drag the icon into the right-hand-side frame.

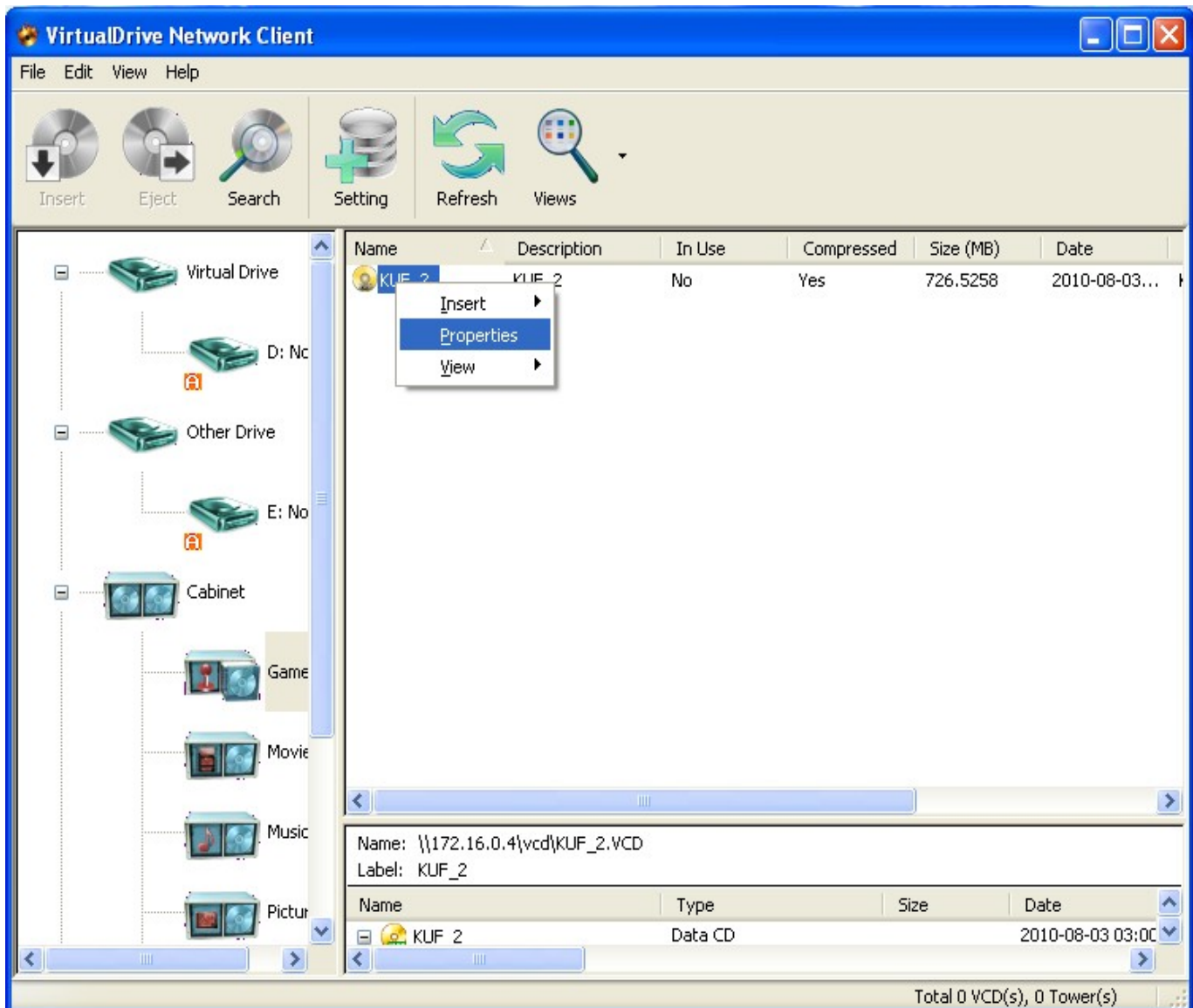
**Method 4** Click on the inserted VCD icon and press "Delete" key on the keyboard.

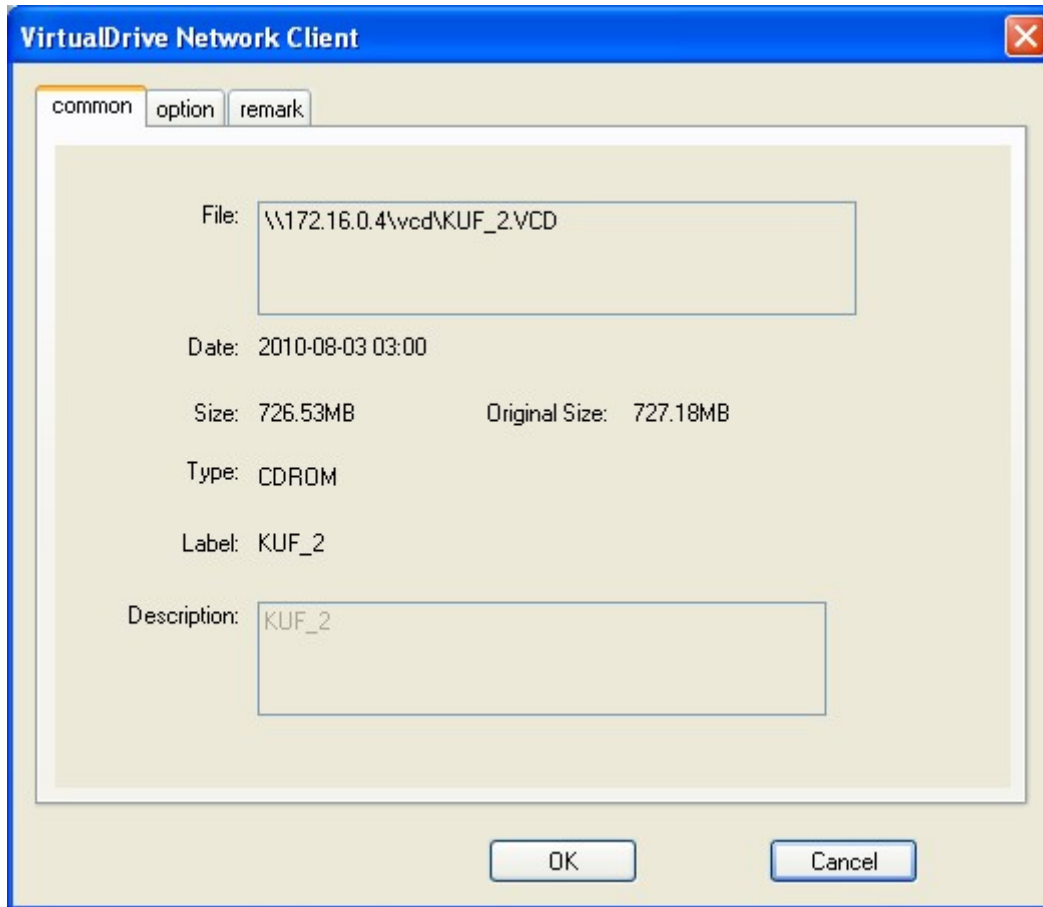
**Method 5** Highlight a inserted VCD icon and select "eject" from "edit" drop menu.

**Method 6** Right click on the VirtualDrive and select **eject** from the popup menu.

## 4.4 Viewing VCD Properties

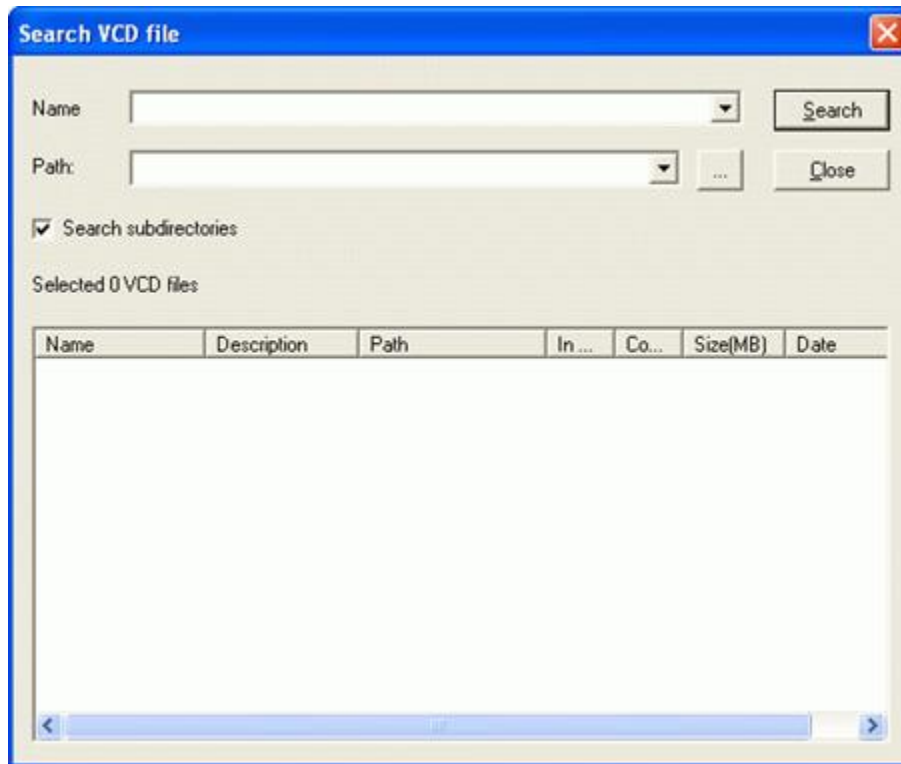
To view the VCD properties, point to a VCD icon and right click to open the VCD properties window (shown below). VCD properties cannot be edited from within the VDN Client program.

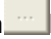




## 4.5 Searching VCD

**Search VCD** let users to search for VCDs being shared by the VDN Server. Select **File->Search** or use hot key Ctrl+F to open Search VCD File window (figure below).



Select VCD folder in **Path** drop menu or browse for folders by clicking on  button.



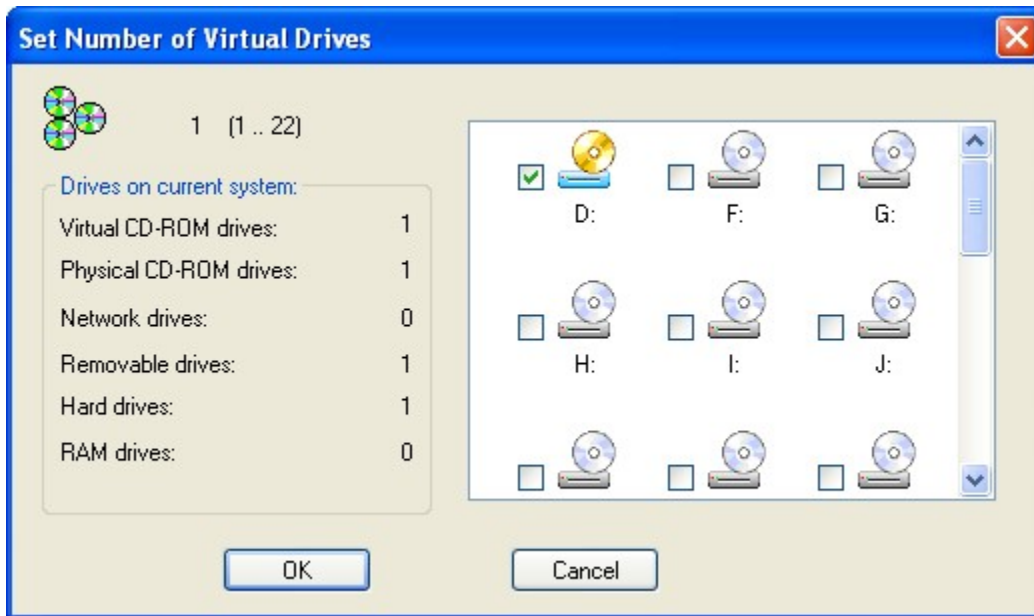
#### **Note**

You can fill the Name field to narrow the search to VCDs with similar filename. Use \* as wildcard to match a search pattern.

Select **Search**, the searched files will be displayed in the window. Right-click on the VCD file and select **Insert** to insert into a Virtual Drive.

## **4.6 Setting the Number of Virtual Drives**

To change the Virtual Drives in your system (the maximum is 23), select "**Number of Virtual Drive**" from the "**View**" menu to open the VirtualDrives dialog (Figure 5-6a). Check the drive letter for each Virtual Drive that you want to Add/Remove, and then click **OK** to finish.



**Note**

Drive letter A, B, C, and D are normally reserved for Windows to use. Check with your I.T. Console to see if any drive letter is reserved for future uses in your organization before allocating Virtual Drives.

## 4.7 Updating changes from the VDN Server

If you know that the Console has made changes to the CD Server, the VDN Client program can be updated to reflect these changes by either restarting the Client program or selecting **View** then **Refresh** on the Menu bar. Or click on the **Refresh** icon.

# Chapter 5: Uninstalling VirtualDrive Network

## 5.1 Uninstalling VirtualDrive Console

**Step 1** To uninstall VirtualDrive Network Console, select **Start/Settings/Control Panel** and double click on the **Add/Remove** Programs icon to open the Add/Remove Programs dialog, select VirtualDrive Network **Add/Move** button.

**Step 2** To confirm uninstall, click on **OK**.

**Step 3** Click on **Finish** to complete.

**Step 4** With the VirtualDrive Network program files removed, click on **Yes** to have the changes effect.

The uninstall program will purge all files created by VirtualDrive Network except files ending with the extension VCD. Your Virtual CD-ROM files can be deleted using the Windows Explorer. If you keep these files, they can be manually added to the VDN Server if you reinstall the VDN Console.

## 5.2 Uninstalling VirtualDrive Client

**Step 1** To uninstall VirtualDrive Network Console, select **Start/Settings/Control Panel** and double click on the **Add/Remove** Programs icon to open the Add/Remove Programs dialog, select VirtualDrive Network **Add/Move** button.

**Step 2** To confirm uninstall, click on **OK**.

**Step 3** Click on **Finish** to complete.

**Step 4** With the VirtualDrive Network program files removed, click on **Yes** to have the changes effect.

The uninstall program will purge all files created by VirtualDrive Network except files ending with the extension VCD. Your Virtual CD-ROM files can be deleted using the Windows Explorer. If you keep these files, they can be manually added to the VDN Server if you reinstall the VDN Console.

## 5.3 Uninstalling VirtualDrive Network Server

**Step 1** To uninstall VirtualDrive Network Server, select **Start/Settings/Control Panel** and double click on the **Add/Remove Programs** icon to open the Add/Remove Programs dialog, select VirtualDrive Network Server then click on the **Add/Remove** button.

**Step 2** To confirm uninstall, click on **OK**.

**Step 3** Click on **Finish** complete uninstall.

## Chapter 6: Appendix

### 6.1 FAQ

**Q1: Why cannot I fail to install VDN Console or VDN Client, or these two components cannot work properly?**

Please check the following three points and retry:

1. Make sure VDN Server has been installed successfully.
2. If you haven't share a file or folder before, make sure run the "Network Setup Wizard" or "Just enable file sharing".
3. Make sure the computer of VDN Server has started up.

**Q2: Why the time for building protected CD is much longer than building other sorts of CDs?**

You must build protected CDs with intelligent extraction, otherwise the building is hard to finish because it cost overmuch time or the VCD is unreadable after the building. Another reason for this phenomenon is that at the beginning of the building, VirtualDrive slows down the speed while reading data from some protected area on the CD (as laserlock, safedisk, securom), so the time estimate to finish will be prolonged. The VirtualDrive will speed up once finish the building on this area and the time remains will be reduced as well.

**Q3: Does the building time vary depending on the quality of the real CD-ROM drive?**

The reading speed of CD-ROM drives produced by different manufacturer diverse varies a lot due to their error-correction ability and other mechanisms. Therefore, the building speed mostly depends on the quality of CD-ROM drive instead of VirtualDrive program.

**Q4: Can I convert a VCD file, which is built by intelligent extraction, into a ISO file?**

The standard of the VCD file that built by using Intelligent Extraction is different from ISO file. So it cant be converted into a ISO file.

**Q5: Does VirtualDrive support IEEE1394 or USB CD-ROM?**

VirtualDrive 7.03 or later version support IEEE1394 or USB CD-ROM. If you still possess the old version, you can download the newer one from our website.

**Q6: VirtualDrive auto-plays the contents of virtual CD at system start-up. How can I stop the auto-play?**

Uncheck **Enable CD autorun** box from **View-> Settings -> Miscellaneous settings** in VirtualDrive menu bar.

**Q7: Why does the game application still ask me to insert the CD when the virtual CD is already inserted?**

You may resolve this problem by trying either of the following methods:

- a. Change a CD drive's drive letter by using "Disk Management" in Windows: right-click **My Computer->Manage->Disk Management**, right click the interested drive, select "**Change Drive Letter and Paths**" to change drive letter.
- b. Build this game CD by using intelligent extraction.

**Q8: Why does the system always prompt that "Please insert a disk into drive" after I insert a VCD (built from Mixed-Mode CD) into a virtual drive?**

The problem may be caused by the file **Filter Driver** in the application **Ahead Nero 5.5.6.4**. The **Filter drive** is not compatible with VirtualDrive, it makes VirtualDrive unable to read data on VCDs with sound tracks. You can resolve the problem by uninstalling Nero from the Computer.

**Q9: Why the maximum number of virtual drive is 23?**

There are 26 letters in alphabet. We suppose that A: and B: are floppy drives on your computer, C: is the entire hard disk, and therefore there are 23 letters left (D-Z), each one can be assigned to a drive. So you can create at most 23 virtual drives.

**Q10: Does VirtualDrive support protected game CD?**

The answer is yes, VirtualDrive supports various protected game CDs as: Mixed-Mode protected, Safedisk1, Safedisk2, Securom, Laserlock, etc.

**Q11: Why can't I hear the background music while playing game?**

The background music of some mixed-mode CD is available only if the CD is inserted in the first CD-ROM on the system.

**Q12: Some games require more than one CD for playing. How can I replace CD without interrupting the game?**

VirtualDrive enables users to use hot-key to insert a CD. Preset a hot-key and virtual drive for the CDs and you can insert them into the designated drive by using the hot-key without stopping the game.

**Q13: What sort of CD need to be built by using "Intelligent Extraction"?**

Some protected CDs as Securom should use intelligent extraction to build.

**Q14: After I set the number and position of virtual drives on WindowsXP/2003 Server, VirtualDrive regards virtual drive as real CD-ROM drive. How can I correct this?**

There are two ways to resolve this problem: (1) Restart your computer (2) Refresh in Device Manager

**Q15: The drive letter of real CD-ROM was arranged to the tail. How can I change the drive letter sequence? ( e.g. change F: to E:)**

You can assign a drive letter to a CD-ROM drive by the following steps:

*Windows 2000/XP/2003 Server only*

(1) Right click on "my computer" from desktop, select **manage --> disk management** .

(2) Make sure which one is virtual drive.

(3) Right click on virtual drive icon, select "change drive letter or paths" from the drop menu.

**Q16: Can two or more Console exist in a local area network?**

No, only one Console is allowed to exist in a local area network.

**Q17: I do not want somebody to see the shared VDN directory via My Network Places, how can I hide it?**

You can keep the directory invisible on a network by renaming the folder name as VDN\$.

## **Software License Agreement**

FARSTONE TECHNOLOGY, INC. (FARSTONE) END USER LICENSE AGREEMENT FOR VirtualDrive Network, HEREAFTER REFERRED TO AS THE "SOFTWARE"

PLEASE READ CAREFULLY: THE USE OF THIS "SOFTWARE" IS SUBJECT TO THE "SOFTWARE" LICENSE TERMS OF FARSTONE AND OTHER LICENSORS WHOSE SOFTWARE MAY BE BUNDLED WITH THIS PRODUCT.

BY YOUR USE OF THE "SOFTWARE" INCLUDED WITH THIS PRODUCT YOU AGREE TO THE LICENSE TERMS REQUIRED BY THE LICENSOR OF THE "SOFTWARE", AS SET FORTH BELOW. IF YOU DO NOT AGREE TO THE LICENSE TERMS APPLICABLE TO THE "SOFTWARE", YOU MAY RETURN THE ENTIRE UNUSED PRODUCT FOR A FULL REFUND.

**LICENSE AND WARRANTY:**

The software which accompanies this license (the "Software") is the property of FARSTONE or its licensors and is protected by copyright law. While FARSTONE continues to own the Software, you will have certain rights to use the Software after your acceptance of this license. Except as may be modified by a license addendum which accompanies this license, your rights and obligations with respect to the use of this Software are as follows:

**A. Single User License:**

(a) use the "Software" on a single computer system or network, and only by a single user at a time. If you wish to use the "Software" for more users, you will need an additional License for each user.

(b) make one copy of the "Software" in machine-readable form solely for back-up purposes, provided you reproduce FarStones copyright proprietary legends. Notwithstanding the foregoing, the "Software" may be used on the home, laptop or other secondary computer of the principal user of the "Software", and an additional copy of the "Software" may be made to support such use. As used in this License, the "Software" is "in use" when it is either loaded into RAM or installed on a hard disk or other permanent memory device. The "Software" may be "in use" on only one computer at any given time. (Different License terms and fees are applicable for networked or multiple user applications.) As a specific condition of this License, you agree to use the "Software" in compliance with all applicable laws, including copyright laws, and that you will not copy, transmit, perform or distribute any audio or other content using the "Software" without obtaining all necessary Licenses or permissions from the owner of the content.

#### **B. Multiple User License:**

Make one copy of the "Software" in machine-readable form solely for back-up purposes, provided you reproduce FarStones copyright proprietary legends.

You must acquire and dedicate a License for each separate computer on which any part or portion of the "Software" is installed or run. As used in this License, the "Software" or any part or portion of the "Software" is "in use" when it is either loaded into RAM or installed on a hard disk or other permanent memory device including any networked or shared environment where either direct or indirect connections are made through software or hardware which pools or aggregates connections.

As a specific condition of this License, you agree to use the "Software" in compliance with all applicable laws, including copyright laws, and that you will not copy, transmit, perform or distribute any audio or other content using the "Software" without obtaining all necessary Licenses or permissions from the owner of the content.

**C. Restrictions:** You may not distribute copies of the "Software" to others or electronically transfer the "Software" from one computer to another over a network. You may not post or otherwise make available the "Software", or any portion thereof, in any form, on the Internet. You may not use the "Software" in a computer service business, including in time-sharing applications. The "Software" contains trade secrets and, in order to protect them, you may not decompile, reverse engineer, disassemble, or otherwise reduce the "Software" to a human-perceivable form. YOU MAY NOT MODIFY, ADAPT, TRANSLATE, RENT, LEASE, LOAN, RESELL FOR PROFIT, DISTRIBUTE, NETWORK OR CREATE DERIVATIVE WORKS BASED UPON THE "SOFTWARE" OR ANY PART THEREOF.

#### **D. Limited Warranty:**

Farstone warrants that the media on which the Software is distributed will be free from defects for a period of thirty(30) days from the date of delivery of the Software to you. Your sole remedy in the event of a breach of this warranty will be that Farstone will, at its option, replace any defective media returned to Farstone within the warranty period or refund the money you paid for the Software. Farstone does not warrant that the Software will meet your requirements or that operation of the Software will be uninterrupted or that the Software will be error-free.

THE ABOVE WARRANTY IS EXCLUSIVE AND IN LIEU OF ALL OTHER WARRANTIES,

WHETHER EXPRESS OR IMPLIED, INCLUDING THE IMPLIED WARRANTIES OF MERCHANTABILITY, FITNESS FOR A PARTICULAR PURPOSE AND NON-INFRINGEMENT. THIS WARRANTY GIVES YOU SPECIFIC LEGAL RIGHTS. YOU MAY HAVE OTHER RIGHTS, WHICH VARY FROM STATE TO STATE.

**E. Limitation of Liability:** IN NO EVENT WILL FARSTONE OR ITS LICENSORS BE LIABLE TO YOU FOR ANY INCIDENTAL, CONSEQUENTIAL OR INDIRECT DAMAGES, INCLUDING ANY LOST PROFITS, LOST SAVINGS, OR LOSS OF DATA, EVEN IF FARSTONE OR A LICENSOR HAS BEEN ADVISED OF THE POSSIBILITY OF SUCH DAMAGES, OR FOR ANY CLAIM BY ANY OTHER PARTY. Some states do not allow the exclusion or limitation of special, incidental, or consequential damages, so the above limitation or exclusion may not apply to you.

**F. General:** You acknowledge that you have read this Agreement, understand it, and that by using the "Software" you agree to be bound by its terms and conditions. You further agree that it is the complete and exclusive statement of the agreement between FarStone and you, and supersedes any proposal or prior agreement, oral or written, and any other communication between FarStone and you relating to the subject matter of this Agreement. No additional or any different terms will be enforceable against FarStone unless FarStone gives its express consent, including an express waiver of the terms of this Agreement, in writing signed by an officer of FarStone. You assume full responsibility for the use of the "Software" and agree to use the "Software" legally and responsibly.

Should any provision of this Agreement be declared unenforceable in any jurisdiction, then such provision shall be deemed severable from this Agreement and shall not affect the remainder hereof. FarStone reserves all rights in the "Software" not specifically granted in this Agreement.

Should you have any questions concerning this Agreement, you may contact FarStone by writing to:

**FarStone Technology, Inc.**  
**10415 Slusher Drive, Unit 1,**  
**Santa Fe Springs, CA 90670, USA**