

VirtualDrive[®] Pro

Version 12.0

for Windows[®] XP, Vista, 2000 & Server 2003, Server2008,
Windows 7

User's Guide

Copyright Notice

No part of this publication may be copied, transmitted, stored in a retrieval system or translated into any language in any form or by any means without the express written permission of FarStone Technology, Inc.

FarStone grants you the right to use one copy of the enclosed software program ("SOFTWARE") on a single computer. If the SOFTWARE is installed on a network, or more than one user can run the SOFTWARE at the same time, you must purchase an additional license for each additional user or computer.

Trademark

FarStone®, VirtualDrive®, VirtualDrive Network and VirtualDrive Professional are trademarks of FarStone Technology, Inc. Microsoft®, Windows® and MS-DOS® are registered trademarks of Microsoft Corporation. Other product names mentioned in this User's Guide may be trademarks or registered trademarks of their respective companies.

FarStone Technology, Inc.

U.S. Headquarters:

350 S Hope Ave, Suite A103

Santa Barbara, CA 93105

Phone: 805 682-5678

Fax: 805 682-4561

Asia-Pacific Offices

10F-1B, No. 207, DunHua North Rd., Taipei, 105, Taiwan

Phone: 886-2-2546-9898

Fax: 886-2-2546-3838

Technical Support

Please contact your retailer or use our online support system at www.farstone.com/support. You'll find answers to frequently asked questions on our website, at www.farstone.com/support/faqs. Follow the site links to the support section or contact a technical support representative using this link: www.farstone.com/company/contact.htm.

Copyright© 2004-2009 FarStone Technology, Inc. All rights reserved.

Software License Agreement

FARSTONE TECHNOLOGY, INC. (FARSTONE) END USER LICENSE AGREEMENT FOR VIRTUALDRIVE PRO, HEREAFTER REFERRED TO AS THE "SOFTWARE"

PLEASE READ CAREFULLY: THE USE OF THIS "SOFTWARE" IS SUBJECT TO THE "SOFTWARE" LICENSE TERMS OF FARSTONE AND OTHER LICENSORS WHO'S SOFTWARE MAY BE BUNDLED WITH THIS PRODUCT.

BY YOUR USE OF THE "SOFTWARE" INCLUDED WITH THIS PRODUCT YOU AGREE TO THE LICENSE TERMS REQUIRED BY THE LICENSOR OF THE "SOFTWARE", AS SET FORTH BELOW. IF YOU DO NOT AGREE TO THE LICENSE TERMS APPLICABLE TO THE "SOFTWARE", YOU MAY RETURN THE ENTIRE UNUSED PRODUCT FOR A FULL REFUND.

LICENSE AND WARRANTY:

The software that accompanies this license (the "Software") is the property of FARSTONE or its licensors and is protected by copyright law. While FARSTONE continues to own the Software, you will have certain rights to use the Software after your acceptance of this license. Except as may be modified by a license addendum which accompanies this license, your rights and obligations with respect to the use of this Software are as follows:

A. Single User License: (a) Use the "Software" on a single computer system or network and only by a single user at a time. If you wish to use the "Software" for more users, you will need an additional License for each user.

(b) Make one copy of the "Software" in machine-readable form solely for back-up purposes provided you reproduce FarStone's copyright proprietary legends. Notwithstanding the foregoing, the "Software" may be used on the home, laptop or other secondary computer of the principal user of the "Software", and an additional copy of the "Software" may be made to support such use. As used in this License, the "Software" is "in use" when it is either loaded into RAM or installed on a hard disk or other permanent memory device. The "Software" may be "in use" on only one computer at any given time. (Different License terms and fees are applicable for networked or multiple user applications.) As a specific condition of this License, you agree to use the "Software" in compliance with all applicable laws, including copyright laws, and that you will not copy, transmit, perform or distribute any audio or other content using the "Software" without obtaining all necessary Licenses or permissions from the owner of the content.

B. Multiple User License: Make one copy of the "Software" in machine-readable form solely for back-up purposes, provided you reproduce FarStone's copyright proprietary legends.

You must acquire and dedicate a License for each separate computer on which any part or portion of the "Software" is installed or run. As used in this License, the "Software" or any part or portion of the "Software" is "in use" when it is either loaded into RAM or installed on a hard disk or other permanent memory device including any networked or shared environment where either direct or indirect connections are made through software or hardware which pools or aggregates connections.

As a specific condition of this License, you agree to use the "Software" in compliance with all applicable laws, including copyright laws, and that you will not copy, transmit, perform or distribute any audio or other content using the "Software" without obtaining all necessary Licenses or permissions from the owner of the content.

C. Restrictions: You may not distribute copies of the "Software" to others or electronically transfer

the "Software" from one computer to another over a network. You may not post or otherwise make available the "Software", or any portion thereof, in any form, on the Internet. You may not use the "Software" in a computer service business, including in time-sharing applications. The "Software" contains trade secrets and, in order to protect them, you may not decompile, reverse engineer, disassemble, or otherwise reduce the "Software" to a human-perceivable form. YOU MAY NOT MODIFY, ADAPT, TRANSLATE, RENT, LEASE, LOAN, RESELL FOR PROFIT, DISTRIBUTE, NETWORK OR CREATE DERIVATIVE WORKS BASED UPON THE "SOFTWARE" OR ANY PART THEREOF.

D. Limited Warranty: FarStone warrants that the media on which the Software is distributed will be free from defects for a period of fifteen (15) days from the date of delivery of the Software to you. Your sole remedy in the event of a breach of this warranty will be that FarStone will, at its option, replace any defective media returned to FarStone within the warranty period or refund the money you paid for the Software. FarStone does not warrant that the Software will meet your requirements or that operation of the Software will be uninterrupted or that the Software will be error-free.

THE ABOVE WARRANTY IS EXCLUSIVE AND IN LIEU OF ALL OTHER WARRANTIES, WHETHER EXPRESS OR IMPLIED, INCLUDING THE IMPLIED WARRANTIES OF MERCHANTABILITY, FITNESS FOR A PARTICULAR PURPOSE AND NONINFRINGEMENT. THIS WARRANTY GIVES YOU SPECIFIC LEGAL RIGHTS. YOU MAY HAVE OTHER RIGHTS, WHICH VARY FROM STATE TO STATE.

E. Limitation of Liability: IN NO EVENT WILL FARSTONE OR ITS LICENSORS BE LIABLE TO YOU FOR ANY INCIDENTAL, CONSEQUENTIAL OR INDIRECT DAMAGES, INCLUDING ANY LOST PROFITS, LOST SAVINGS, OR LOSS OF DATA, EVEN IF FARSTONE OR A LICENSOR HAS BEEN ADVISED OF THE POSSIBILITY OF SUCH DAMAGES, OR FOR ANY CLAIM BY ANY OTHER PARTY. Some states do not allow the exclusion or limitation of special, incidental, or consequential damages, so the above limitation or exclusion may not apply to you.

F. General: You acknowledge that you have read this Agreement, understand it, and that by using the "Software" you agree to be bound by its terms and conditions. You further agree that it is the complete and exclusive statement of the agreement between FarStone and you, and supersedes any proposal or prior agreement, oral or written, and any other communication between FarStone and you relating to the subject matter of this Agreement. No additional or any different terms will be enforceable against FarStone unless FarStone gives its express consent, including an express waiver of the terms of this Agreement, in writing signed by an officer of FarStone. You assume full responsibility for the use of the "Software" and agree to use the "Software" legally and responsibly.

Should any provision of this Agreement be declared unenforceable in any jurisdiction, and then such provision shall be deemed severable from this Agreement and shall not affect the remainder hereof. FarStone reserves all rights in the "Software" not specifically granted in this Agreement.

Should you have any questions concerning this Agreement, you may contact FarStone by writing to:

FarStone Technology, Inc.
Legal Department
350 S Hope Ave, Suite A103
Santa Barbara, CA 93105

Contents

Chapter 1: Product Overview	7
1.1 Product Features	7
Chapter 2: Installation	8
2.1 System Requirements	8
2.2 Installing VirtualDrive Pro	8
2.3 Uninstalling VirtualDrive Pro	9
Chapter 3: Getting Started in VirtualDrive Pro	10
3.1 Launching VirtualDrive Pro	10
3.2 VirtualDrive Pro Start Menu	11
3.3 VirtualDrive Pro Main Console	12
3.4 Creating a Virtual CD	13
<i>Building an Image from CD or DVD-ROM, Video CD/DVD, or Photo CD</i>	13
<i>Building an Image from Audio CD</i>	14
<i>Building an Image from a Mixed Mode CD</i>	14
3.5 Creating a Virtual Drive	15
3.6 Custom Backup	15
<i>Creating a Project</i>	15
<i>Adding Files and Folders to a Project</i>	16
<i>Working with Project Files and Folders</i>	17
<i>Setting Project Properties</i>	18
<i>Burning a Project to Disc</i>	19
<i>Using Multiple Discs for a Project</i>	19
<i>Burning a Project to Virtual CD (Image)</i>	20
3.7 Restoring a VCD to CD/DVD	20
3.8 Burning Settings	20
<i>Disabling the CD/DVD Drive Auto-run Feature</i>	20
<i>Choosing Burning Settings</i>	21
3.9 Cloning a CD/DVD	22
3.10 The VCD Manager	23
<i>Using Virtual Drives in the VCD Manager</i>	24
<i>Using Physical Drives in the VCD Manager</i>	24
<i>Adding VCDs to the VCD Manager</i>	24
<i>Organizing VCDs in Cabinets</i>	24
<i>Searching for VCDs</i>	25
<i>Extracting Files from a VCD</i>	25
<i>Inserting a VCD into a Virtual Drive</i>	25
<i>Ejecting a VCD from a Virtual Drive</i>	25
<i>Importing and Exporting a VCD List</i>	26
3.11 Enabling and Disabling Physical Drives	26
3.12 Converting VCDs and ISO 9660 Images	26
Chapter 4: Command Line Support	27
4.1 Running VCDs with Command Line Syntax	27

4.2	Creating Shortcuts to Run VCDs	27
Chapter 5: Virtual Hard Drive Pro		29
5.1	Creating a RAM Disk	29
5.2	Loading an Image as a RAM Disk	30
5.3	Saving a RAM Disk.....	30
5.4	Removing a RAM Disk	30
5.5	Exploring a RAM Disk	30
Chapter 6: Technical Support and Product Updates		31
Glossary		32

Chapter 1: Product Overview

VirtualDrive Pro is a CD emulation utility that creates disc images, or “virtual CDs” from game and application CDs and DVDs. This enables you to run games and applications without the physical disc loaded in a CD/DVD-ROM drive. Your virtual CDs (VCDs) run in any one of up to 23 “virtual drives” that you configure in the software and that appear as drive letters in Windows Explorer. VirtualDrive Pro also includes a full version of Virtual Hard Drive, a RAM disk drive utility that functions like an extra hard drive on your computer, only much faster and without wear and tear on physical parts.

1.1 Product Features

- **CD/DVD Support**
VirtualDrive supports the following CD/DVD formats: CD-ROM, CD Extra, CD Text, audio CD, mixed-mode CD, photo CD, video CD, DVD-ROM, multi-session CD, and unprotected DVD video.
- **Copy Protection Support**
VirtualDrive Pro is compatible with many (but not all) titles using SafeDisc, SecuROM, LaserLock, StarForce, and other protection types.
- **Full Windows Integration**
The user interface is integrated with Windows Explorer and Device Manager, so that you can insert, eject, and browse your VCDs in a familiar environment.
- **VCD Cabinet**
Sort your VCDs in your VCD library and place them in different “cabinets,” or categories.
- **Image Compression**
VirtualDrive Pro uses a high-performance compression engine when it builds VCDs. Compressed VCDs are automatically decompressed when you access them.
- **Optimized Disc Performance**
Play VCDs directly on your hard drive, or with access rates approximately 200 times faster than a CD-ROM drive.
- **Optimized Application Performance**
An included copy of Virtual Hard Drive Pro lets you run files and applications in physical memory, boosting performance by bypassing the slower, mechanical hard drive.

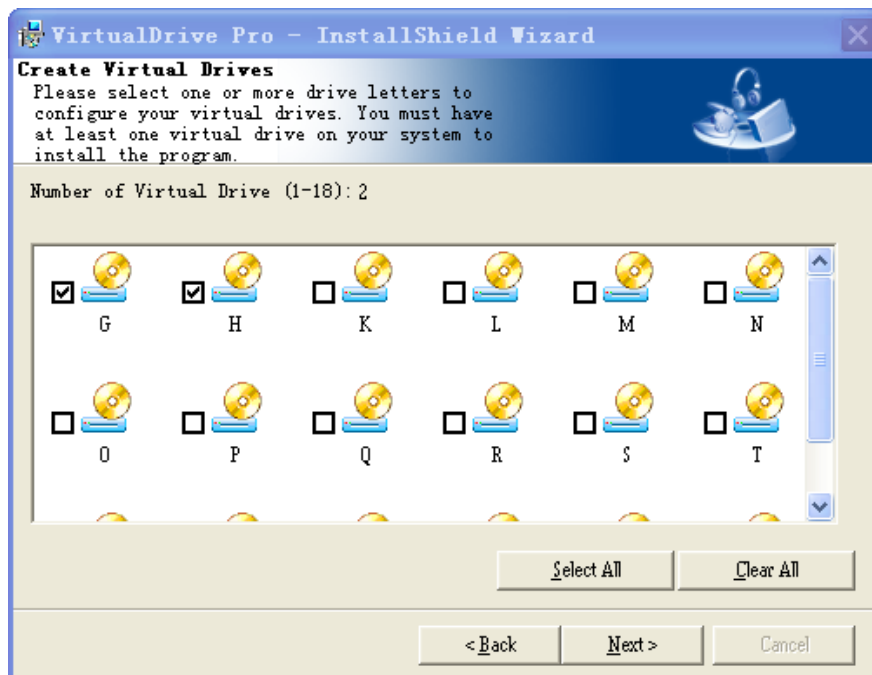
Chapter 2: Installation

2.1 System Requirements

- Windows 2000, XP (including 64-bit system), Server 2003 (including 64-bit system), Server 2008 (including 64-bit system), Vista (32-bit system and 64-bit system) or Windows 7 (including 64-bit system)
- CD/DVD drive or recorder
- 50 MB of hard drive space
- Intel Pentium (or compatible) 233MHz processor or better

2.2 Installing VirtualDrive Pro

1. Close any running applications.
2. Click on the VirtualDrive Pro executable file.
3. If you accept the terms of the license agreement, select **I Accept the License Agreement** and click **Next**.
4. Enter your Name, Organization (optional), and serial number. Click **Next**.
5. The installation wizard will recommend a default folder for VirtualDrive Pro program files. If you would like to store program files in another location, select **Change** to open the file browser and designate a new folder.
6. Confirm the setup configuration and click **Next**.
7. Choose the number of virtual drives to be configured on your system and click **Next**. You must have at least one virtual drive on your system or the program will not install.



8. Selecting the appropriate checkbox place a program shortcut on your desktop.
9. Select **Finish**. You needn't reboot your computer before you can launch VirtualDrive Pro.

2.3 Uninstalling VirtualDrive Pro

1. Close all other running programs. If the VirtualDrive Pro icon is displayed in the System Tray, right click on the icon and select **Exit** to close VirtualDrive Pro as well.
2. To launch the VirtualDrive Pro uninstall wizard:
 - a. In the Windows taskbar, select **Start → All Programs → VirtualDrive Pro → Uninstall VirtualDrive Pro**.

Or:

- b. Select **Start → Control Panel** and double click the **Add or Remove Programs** icon to open the **Add or Remove Programs** screen. Select **VirtualDrive Pro** from the list, then select **Add/Remove**.

The uninstall program will remove all files created by VirtualDrive Pro, except image files (VCDs with the "VCD" or "D00..." extension), project files ("CIF" extension) and some log files that keep a record of the VCD list in your VCD library. These files are located in the VirtualDrive Pro install path and can be accessed or deleted in Windows Explorer.




Note

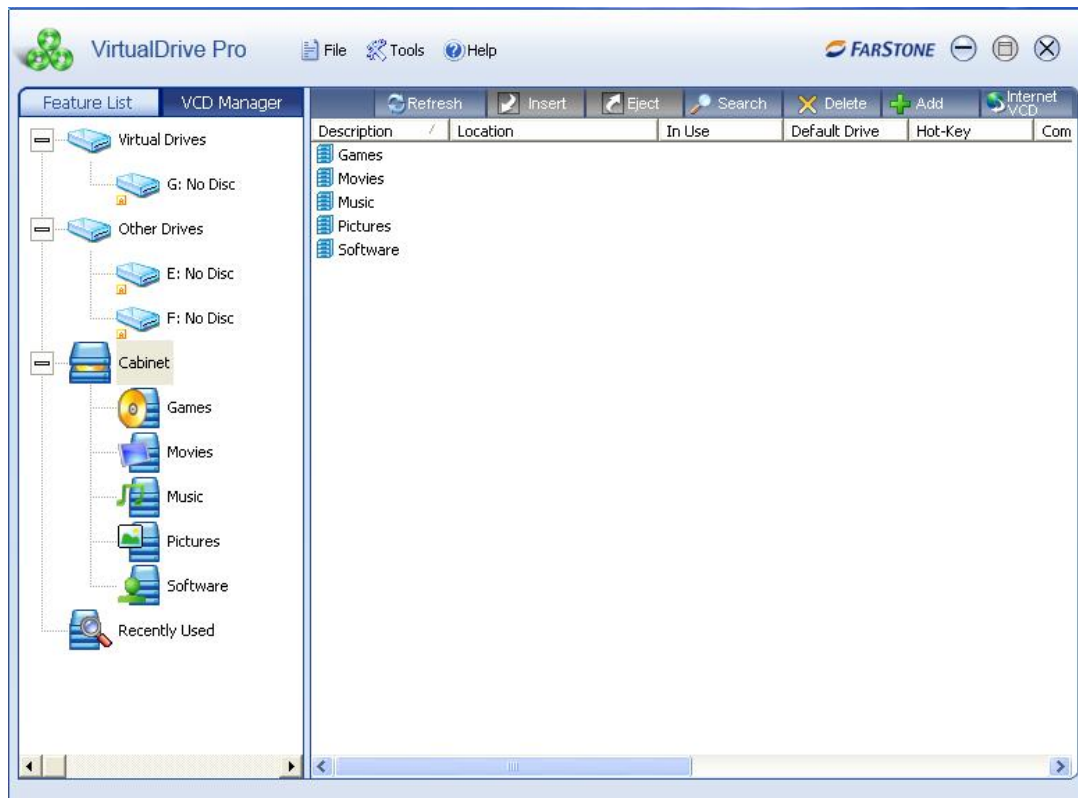
You can select the checkbox to delete VCD List or VCD files in the VCD Cabinets automatically while uninstalling VirtualDrive Pro.

Chapter 3: Getting Started in VirtualDrive Pro

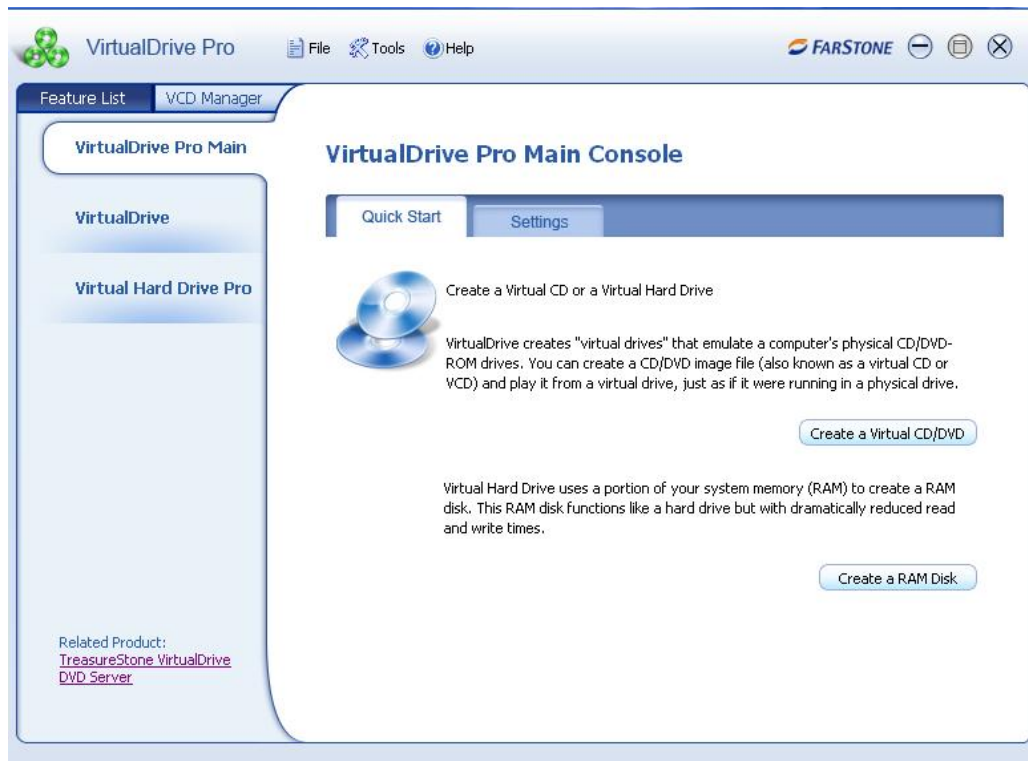
3.1 Launching VirtualDrive Pro

To launch VirtualDrive Pro, double click the program icon  on the desktop, or select **Start → All Programs → VirtualDrive Pro → VirtualDrive Pro Manager**.

The VCD Manager lets you organize your virtual discs in the VCD library, insert them into virtual drives for play, and open them up to examine their contents. You'll find more information on the VCD Manager in Chapter 3, Section 6.



To view other functions of VirtualDrive Pro, click on the **Feature List** tab (under the VirtualDrive Pro logo in the upper left-hand corner). This will launch the VirtualDrive Pro Main Console, with shortcuts to virtual CD creation, RAM disk creation, and program settings. On the left side of the Main Console are buttons to the following program components: A) VirtualDrive; B) Virtual Hard Drive Pro; and C) Live Update.



A. VirtualDrive: Software that emulates your computer's CD/DVD-ROM drive, enabling you to run converted CD/DVD programs directly on your hard drive. Click on the VirtualDrive tab to:

- **Create a Virtual CD**
Make an image file from a physical CD/DVD.
- **Create a Virtual Drive**
Configure up to 23 virtual drives to play your virtual CDs (limited to the number of available drive letters on your computer).

B. Virtual Hard Drive Pro: This RAM disk drive utility lets you run files and applications in non-swappable physical memory. From the Virtual Hard Drive Pro screen you can:

- Create a RAM Disk
- Load a RAM Disk
- Save a RAM Disk
- Remove a RAM Disk
- Explore a RAM Disk

C. Live Update: Use this link to check for the latest program updates.

3.2 VirtualDrive Pro Start Menu

The VirtualDrive Pro icon should be displayed in your Taskbar Notification area.



Double click on the icon to launch VirtualDrive Pro. Right click on the icon to open the VirtualDrive Pro Start Menu. The Start Menu offers a quick entry point to the most commonly used functions in VirtualDrive Pro:

- **VirtualDrive Pro:** Select this option to launch VirtualDrive Pro.
- **Insert:** Select an image to insert into a virtual drive. You can choose an image from your VCD library or from any other location on your hard drive.
- **Eject:** Click to eject a VCD from a virtual drive.
- **Browse:** View the contents of an inserted VCD via Windows Explorer.
- **Exit:** Select this option to quit VirtualDrive Pro.

3.3 VirtualDrive Pro Main Console

By default, the Main Console displays a **Quick Start** menu. Click on the **Settings** tab to change preferences in the software.

Quick Start

1. **Create a Virtual CD/DVD**
Please refer to **Creating a Virtual CD** (Section 3.4) for details.
2. **Create a RAM Disk**
Configure a virtual hard drive in a designated amount of RAM.

Settings

1. **Global Settings**
 - a. **Show Animation when you insert or eject a VCD:** Select this checkbox to display the action of inserting or ejecting a VCD.
 - b. **Keep VCDs loaded upon system reboot:** Select this checkbox to keep VCDs loaded in VirtualDrive Pro when you restart your system.
2. **Virtual Drive Settings**
 - a. If VirtualDrive Pro does not work with certain games or protected discs, you may want to change device information.
 - b. You can enable Autorun in all drives on your system—virtual and physical.
3. **Virtual Hard Drive Settings**
 - a. **Auto-load most recent image:** Automatically load the image that was last mounted in your RAM disk whenever you launch Virtual Hard Drive Pro.
 - b. **Save image upon restart or shutdown:** Automatically save your last image file to your hard drive whenever you turn off or reboot your computer.
 - c. **Save image during hibernation:** Automatically save your image whenever your computer goes into sleep mode.
 - d. **Back up image before saving it:** Virtual Hard Drive Pro can automatically back up your RAM disk data so that it is not lost in the event of power loss or a system crash.
 - e. **Save the image every "N":** This setting will automatically save your RAM disk at specified intervals.

Serial Numbers and Support

To activate a full version of VirtualDrive Pro, click **Help** → select **Buy Full Version** and enter your serial number. A serial number can be used on only one computer system on any given LAN. FarStone posts game and disc support information at www.farstone.com/gamecenter. The Game Center link is also available from the VirtualDrive Pro Help menu.

Should you experience a problem with your software, FarStone encourages you to submit a support ticket at www.farstone.com/support.


3.4 Creating a Virtual CD

A virtual CD or VCD (.VCD extension) is an image file created from a physical disc. VirtualDrive Pro lets you build VCDs from the following disc types:

- CD-ROM
- DVD-ROM
- Mixed-mode CD
- Video CD
- Unprotected (non-CSS) video DVD
- CD Extra
- CD-Cops
- Audio CD
- Photo CD
- Multi-Session CD
- CD-Text


VirtualDrive Pro supports many (but not all) DVD-ROM games, encyclopedias, multimedia content, and other large file formats.

Building an Image from CD or DVD-ROM, Video CD/DVD, or Photo CD

1. Insert the application disc. In the VirtualDrive Pro Main Console, select **VirtualDrive** → **Create Virtual CD**.
2. Select the physical drive from which you will build an image and click **Next**.
3. If wish to change the default path for saving your VCD, click the  button, browse the directory structure to select a location, enter a name for your VCD, and click **Next**.
4. You can change the default settings for your VCD build. For instance, you can use CD read method, data compression, Intelligent Extraction, and designate a protection type.
 - a. If you don't know what type of protection is on your CD/DVD, choose **Intelligent Extraction** to build your VCDs.
 - b. Select **Other Protection Type** if you would like to select a known protection type from the dropdown list.
 - c. Select **Use Data compression** to save hard drive space; however, this option will prolong the time it takes to build a VCD.
5. Click **Advanced** to change the default file name of your VCD and enter a password, description, etc.
 - a. **CD Label**: Show the name of your VCD.
 - b. **Description**: Add a description for your VCD.

- c. **Author:** Enter the name of the CD's publisher or author (i.e., FarStone Technology).
- d. **Comments:** Add other comments to your VCD.

(Optional) You can set a password for VCDs. This password will be required whenever you decide to access VCD.

(Optional) If the source CD does not have an Auto-run file, you can specify a program to run your VCD when you insert it in a virtual drive. Click the  button to browse for the program you would like to use.


6. Once you have modified the properties of the VCD you are about to create, click **Next** to begin the build process.



Note

In order for your VCD to work, you may still have to install the game or supplemental software that is currently required to run the disk-based application that you have converted into a VCD.

Building an Image from Audio CD

1. Insert the application disc. In the VirtualDrive Pro Main Console, select **VirtualDrive** → **Create Virtual CD**.
2. Select the physical drive from which you will build an image and click **Next**.
3. If you wish to change the default path for saving your VCD, click the  button, browse the directory structure to select a location, enter a name for your VCD, and click **Next**.
4. Select the tracks you want to include in your audio VCD by checking the appropriate boxes.




Note

If your CD player is running, the Select Tracks window will not be able to show the tracks list.

Select the Preview Track **Play** button  to listen to the track.


5. Click **Next** to begin building your audio VCD.

Building an Image from a Mixed Mode CD

1. Insert the application disc. In the VirtualDrive Pro Main Console, select **VirtualDrive** → **Create Virtual CD**.
2. Select the physical drive from which you will build an image and click **Next**.
3. If you wish to change the default path for saving your VCD, click the  button, browse the directory structure to select a location, enter a name for your VCD, and click **Next**.
4. You can change the default settings for your VCD build. For instance, you can use CD read method, data compression, Intelligent Extraction, and designate a protection type.
 - a. If you don't know what type of protection is on your CD/DVD, choose **Intelligent Extraction**.
 - b. Select **Other Protection Type** if you would like to select a known protection type from the dropdown list.

- c. Select **Use Data Compression** to save hard drive space; however, this option will prolong the build process.
5. Click **Advanced** to change the default file name of your VCD and enter a password, description, etc.
 - a. **CD Label:** Show the name of your VCD.
 - b. **Description:** Add a description for your VCD.
 - c. **Author:** Enter the name of the CD's publisher or author (i.e., FarStone Technology).
 - d. **Comments:** Add other comments to your VCD.

(Optional) You can set a password for VCDs. This password will be required whenever you decide to access the VCD.


(Optional) If the source CD does not have an Auto-run file, you can specify a program to run your VCD when you insert it in a virtual drive. Click the  button to browse for the program you would like to use.

6. You can select the audio tracks you want to include in your VCD by checking the appropriate boxes in the tracks list.



Note

If your CD player is running, the Select Tracks window will not display the track list.

Select the Preview Track 'Play' button  to listen to the track.

7. Click **Next** to begin the build process.

3.5 Creating a Virtual Drive

A virtual drive emulates the functionality of a physical drive and appears as a drive letter in Windows Explorer. To create a virtual drive:

1. In the Main Console, select **VirtualDrive** → **Create a Virtual Drive**.
2. Select one or more available drive letters and click **Start**.

Note

You can create up to 23 virtual drives, depending on available drive letters.

3.6 Custom Backup

VirtualDrive Pro lets you create a custom data and UDF virtual CDs.

Creating a Project

You can burn a project of selected files to CD/DVD or save it as a virtual CD (VirtualDrive Image file). Because disc types are created using the same method, here we describe how to make a data CD/DVD only.

To start a new Data CD/DVD project, select any of the following options from the CD/DVD Burning Manager:

1. **File** → **New** → **Data CD/Data DVD**, or;
2. Click the small triangle to the right of the **New** button, then select **Data CD/Data DVD**, or;
3. Right-click in the Project Pane and select **New** → **Data CD/Data DVD**.

For more information on disc types, please refer to the appendix *Definitions*.



Note

If you are burning a UDF CD, CD/DVD Burning uses Unicode in the file name and supports only 127 characters.

An unclosed CD cannot be used for a multi-session disc.

Tip: Windows Explorer lets you view only the last session of a multi-session disc. With VirtualDrive Pro, you can view the contents of all sessions through **CD/DVD Burning Manager** → **Tools** → **Device Info** → **Disc Contents**.

Adding Files and Folders to a Project

You can now add files and folders to your project using any of the following methods:

- Drag files and folders from the Source Pane or from Windows Explorer to the Current Project Pane.
- Copy and paste files and folders from the Source Pane or Windows Explorer to the Current Project Pane.
- Select files and folders from the Source Pane, right-click on the selected objects, and click **Add**.
- Select files and folders from the Source Pane and choose **Edit** → **Add to Project**.
- Select **Edit** → **Add File** to display the Open dialog box, then select your files and folders.
- Right-click the Destination Project (to which the file will be added) or a destination folder from the Project Pane and choose **Add File**. This will display the Open dialog box, where you can select your files and folders.
- Right-click on any blank area of the Current Project Pane and select **Add File** to display the Open dialog box, then select your files and folders.




Note

As you add files to your project, you can preview documents, photos, videos, and audio files by double-clicking on their icons in the Source Pane.

You can also view the contents of a folder by right-clicking on the folder and selecting **Open**.

**Note**

The horizontal scale bar at the bottom of the Project Pane displays the total size of the project. The default scale is set automatically according to the project type you are creating. You can change the scale by clicking the  icon in the left corner of the toolbar.

Working with Project Files and Folders

Once you have added one or more files to your project, you can complete the following operations:

1. **Create a new folder**
 - a. Click anywhere in the Current Project Pane and choose **Edit → New Folder**, or;
 - b. Right-click on any blank area of the Current Project Pane and select **New Folder**.
2. **Delete files and folders:** You can add or remove any files and folders from your project.
 - a. Select a file or folder and choose **Edit → Delete** from the menu bar, or;
 - b. Right-click on the file or folder select **Delete**, or;
 - c. Select the file or folder in the project and press the **Delete** key.
3. **Rename files and folders**
 - a. Select a file or folder and choose **Edit → Rename** from the menu bar, or;
 - b. Right-click the file or folder in the project and select **Rename**.
4. **View File Properties**
 - a. Right-click on a file or folder anywhere in the CD/DVD Burning Manager and select **Properties**. A dialog box will show general information about the file, including type, location, size, time created, and attributes.

Saving a Project

1. Choose **File → Save As** from the menu bar.
2. Type in a file name and select a location for the file.
3. Click **Save**.

Opening a Project

1. Click **File → Open** from the menu bar, and browse for the project you want to open, or;
2. Right-click anywhere in the Project Pane and click **Open**.

Renaming or Deleting a Project

You can rename a project in the Project Pane. This will be your CD label when you burn the project to CD/DVD.

1. Select the project, and click **Edit → Rename** from the menu bar, or;
2. Right-click on the project and select **Rename**.

To delete a project from the Project Pane (this does NOT remove the file from your hard drive):

1. Select the project and click **Edit → Delete Project** from the menu bar, or;

2. Right-click on the project and select **Delete Project**.

Setting Project Properties

The project properties dialog box displays the general, file system, CD archives, and audio properties of a project.

To view project properties:

1. Select the project, and then click **File → Properties** from the menu bar, or;
2. Right-click on the project and select **Properties**.

Property Types

1. **General**

Edit the CD Label and view the type, location, size, and attributes of the project, the number of files and folders it contains, etc.

2. **File System**

Set the file system of the disc as UDF, ISO9660, or ISO9660+Joliet, edit Volumes, Serial Number, CD Publisher, etc.



Note

1. If you choose ISO9660 (+Joliet), please note the following limitations of a ISO9660 disc:
 - The maximum interleaf depth is restricted to 8 levels (including root directory).
 - ISO9660 supports file names in 8.3 format (8 characters for the file name and 3 characters for the file extension).

An ISO9660 disc has the best compatibility with other operating systems and devices, and can be read from all operating systems.
2. If you choose UDF, the burned disc can only be used on operating systems with a UDF file system reader installed. Currently, Microsoft Windows 2000 (SP3), Windows XP and later versions support UDF discs.

3. **Advanced**

Set the disc format and times.

Format

CD-ROM Mode 1: Data is stored in sectors with each sector holding 2,352 bytes of data. For Mode 1 CD-ROM data storage, the sectors are further broken down. 2,048 bytes are used for the expected data, while the other 304 bytes are devoted to Sync, Header, EDC (Error Detection Code) and ECC (Error Correction Code). CD-ROM Mode 1 is used for error-intolerant discs such as software, game discs and documentation discs.

Create Time

Use the date and time of the original file: Sets the date and time stamps of the files and folders on the burned disc as the date when the source files or folders were created.

Use the current data and time: Sets the date and time stamps of the files and folders on the burned disc as the date and time when the disc was burned.

Use this time: Lets you specify a date and time stamp for the files and folders on the burned disc.

Burning a Project to Disc

1. Set the Default Recorder to a physical CD/DVD recorder in your computer.
2. Choose either of the following methods to launch the Burning Setup window:
 - a. Select **File → Burn** from the menu bar, or;
 - b. Click the **Burn** icon.
3. A Burning Setup dialog box will display. Choose your burning settings and click **Record**.

Note

If the Auto-run function of your recorder is enabled, an Auto-run warning dialog box will appear before the Burning Setup dialog box is displayed.

4. Click **OK** to end the burning process.

Using Multiple Discs for a Project

Burning Data onto Multiple Discs

VirtualDrive Pro supports split-volume. When your data exceeds disc capacity, VirtualDrive Pro can burn the project onto multiple discs. Later, you will need to insert only the first volume of a multiple disc set to view and retrieve data.

1. Create a Data CD/DVD project in CD/DVD Burning or Easy Backup.
2. When you burn the project to disc, VirtualDrive Pro will automatically divide the data and prompts you to tag each volume.
3. Once the first volume has been burned, VirtualDrive Pro will prompt you to insert more discs, as needed.

Note: Only **DATA CD/DVD** projects can be burned onto multiple discs and only when the file system of the disc is set as an ISO 9660 disc. You can set the disc file system in the **Disc properties / File System** area.

Retrieving Data from Multiple Discs

1. When you insert the first volume of a multiple disc set, the integrated tool Retriever will run automatically. If the Retriever does not run automatically, you can run it manually launching START.EXE on the disc.
2. Clicking on the disc entry in the left pane will display all disc data in the right pane, including data from other discs in the set.
3. Select the file(s) or folder(s) to be retrieved by checking the corresponding check boxes.
4. Click the **Retrieve** button to launch the Data Retrieve window. Select a location to save the retrieved data.


Searching for Files on Multiple Disc Sets

1. Click the **Search** button to launch the search window.
2. Enter a file name in the search box. You should enter a full file name with its file extension, but can use "*" as the extension to search for all type of files.
3. Choose a search mode and click **Search**.
4. Once the search results are displayed, select the file and click **Retrieve** to save it back to your hard drive.

Using a Virtual Drive to Retrieve Data on Multiple Disc Sets

1. Copy the image file on each disc to the same location on your hard drive. Typically, the first volume of the entire image (the image file copied from the first disc) is named as "DATA_CD.VCD.000", and the second as "DATA_CD.VCD.001".
2. Insert the first volume into a virtual drive. You can now work with the image as you would with any image created in VirtualDrive Pro.

Burning a Project to Virtual CD (Image)

1. To create an Image from the selected files, set the default recorder to the Imager Recorder.
2. Select **File → Burn**.
3. Click the browse button  to select a location to save the new Image file. Name the Image file a name and click **Next**.
4. Enter a description of the new Image in the description box.
5. (Optional) You can set a password for Image files. The password will be required if you attempt to insert the Image or view the content of the Image.
6. (Optional) If the CD does not have an Auto-run file, you can specify a program to run it when the Image is inserted.
7. Using data compression will save hard drive space but will also require a more time to build the Image.
8. A dialog box will display the attributes of the Image about to be created. Select **Burn** to begin building the Image.

3.7 Restoring a VCD to CD/DVD

You can restore an Image by burning its contents back to disc. This will recreate the original files you used to build the Image.

1. From the VirtualDrive Pro Main Console, select **Image to Disc**.
2. Select the Image file you want to burn and click **Open**. Only one Image can be selected at a time.
3. The selected Image and its relevant information will be displayed in a dialog box. You can also replace the selected Image with another one by right clicking in the dialog box and selecting **Add**.
4. Click **Next** and choose your burning settings, then click **Burn**.

3.8 Burning Settings

Disabling the CD/DVD Drive Auto-run Feature

If the Auto-run function of your CD/DVD disc drive is enabled, a warning dialog will appear before you choose Burning Setup, and can sometimes cause an error when you try to erase or burn a disc.

You can disable the auto insert notification by clicking the first radio button in this dialog box. **Note:** This will log you off of Windows, so be sure to save your open documents and close all applications before proceeding.

You can select **Cancel** and manually disable the Auto-run function by choosing **Tools → Options → General → Disable CD-ROM drive Auto-run function** from the CD/DVD Burning Manager.

Choosing Burning Settings

Before your burn a disc from a project, an Image, or from another disc, you must first choose your burning settings.

- **Recorder:** Shows the recorder to be used to burn the disc. Click the **Device Info** button to view information about the recorder.
- **Write Method:** Available write methods include: DAO, SAO, TAO, and Raw; available methods may differ depending on the operation you wish to perform.

Tips

- ★ **Disc-at-Once (DAO):** This method writes all data onto a CD in a single operation, starting from lead-in and ending at lead-out (start and end zone) without switching off the laser writer. Because there is no gap between tracks, a disc cloned using this method is exactly the same size as the source disc. If you cancel this operation after the lead-out has been recorded, you will not be able to use the disc again.
 - ★ **Track-at-Once (TAO):** This method writes data to disc in multiple passes and allows you to record a single track (data or music) at a time. The lead-in and lead-out are written after all tracks have been recorded. Tracks recorded in Track-at-Once mode are separated by gaps. If a data track is followed by a music track, the gap is two or three seconds. The gap between two music tracks is usually two seconds.
 - ★ **Session-at-Once (SAO):** This method writes data to the disc in a single operation and finalizes the session at the end of the process. A Session-at-Once recording is similar to Disc-at-Once, the only difference being that the disc is not closed after a Session-at-Once recording, allowing you to write another session on the disc at a later date. SAO is typically used to make a multi-session disc. If you are making a music CD, this option eliminates the two-second gap between tracks and write-protects the CD.
-
- **Write Speed:** We recommend that you choose the Best Speed option.
 - **Number of Copies:** Select the number of discs to be burned.
 - **Buffer Under-Run Protection:** Select this option to reduce buffer under-run errors during the recording process.

Tip

- ★ **Buffer Under-Run** is an error that occurs when the data transfer rate is slower than the write speed to a CD/DVD. The CD/DVD recorder has a buffer that is constantly filled with data in the event of a system slowdown or interruption. If the buffer is emptied before the system can recover, a buffer under-run occurs. Buffer-under-run technology allows the laser of a recorder

to be stopped temporarily after a buffer under-run without damaging the CD/DVD.

- **Close CD:** Check this box to close the disc after recording. (Note: No track or session can be added to the disc once it is closed. A closed disc has better compatibility between different computers and devices, and can be read on most CD/DVD drives.
- **Verify Data after Recording:** Check this box to allow recorded data to be verified for accuracy. This option is not available for a music CD.
- **Burn Mode:**
 - **Test:** No physical disc is needed for this test, which will check for errors that might occur during the burning process. Choose this mode when:
 - You are not sure whether the disc and the recorder are compatible, or;
 - You are not sure if the burning settings are correct.
 - **Test+Burn:** First simulates the burning process and, if no errors occur, proceeds to burn data to disc.
 - **Burn:** Burns data to disc immediately.

3.9 Cloning a CD/DVD

You can make an exact copy of an existing CD/DVD on another recordable disc.

1. In the Main Console, select **Clone CD/DVD**. The way you clone your disc will depend on the number of CD/DVD drives connected to your computer.

Cloning a Disc with Two CD/DVD-ROM Drives

1. Insert a blank disc into one CD/DVD recorder, and then insert the source disc into your other CD/DVD-ROM drive.
2. From the drop-down menu in the dialog box, select the drive containing the source disc.
3. Other options in this dialog box include:
 - **Disc Information:** View disc type, number of sectors, disc size, time and sessions, tracks, start sector, and end sector of the source disc.
 - **Read Speed:** Select a read speed from the dropdown menu. For best results, choose the Best Speed option.
 - **Ignore read errors:** Checking this box will set the burner to ignore read errors from the source disc.
 - **On-the-fly:** Checking this option enables quick cloning.



Note

If the on-the-fly option is checked, data will be taken directly from the source disc and burned on the target disc.

If on-the-fly is not checked, data from the source disc will first be compressed as an Image and stored in a temporary files folder. The original contents of the source disc will then be burned to the target disc.

This option is not available if there is only one CD/DVD-ROM drive in your computer.

- Click **Next** to display a dialog box. Choose your burning settings and click **Burn**.

Cloning a Disc with Using One CD/DVD-ROM Drive

- Insert a blank disc into one CD/DVD recorder, and then insert the source disc into your other CD/DVD-ROM drive.
- From the drop-down menu in the dialog box, select the drive containing the source disc.
- In the dialog box, choose your burning settings and click **Record**.



Note

The next two steps are settings for making an Image.

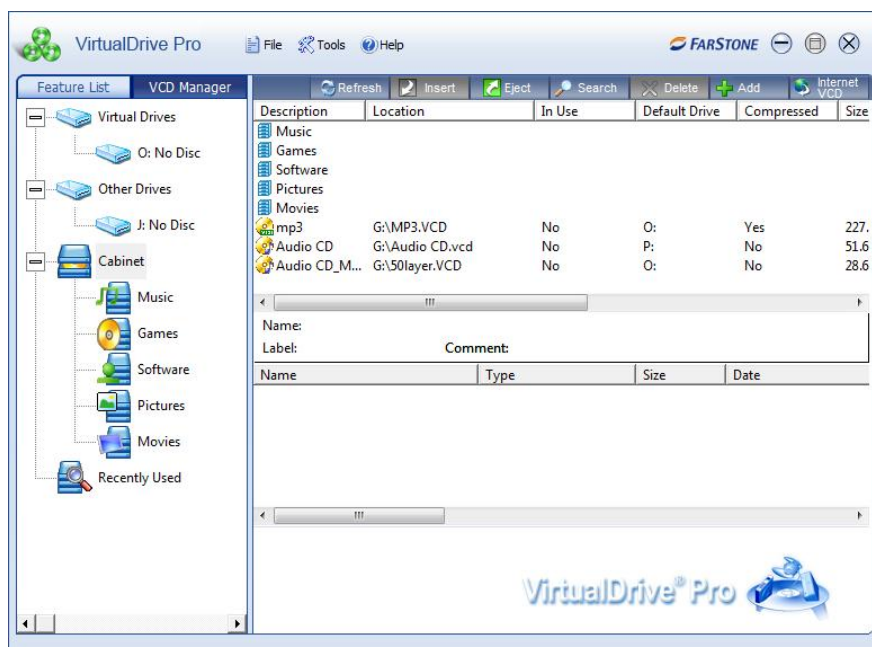
- Select a CD/DVD read method. The default read method of "Intelligent Extraction" works with most CD formats. If you know what protection type is used on the CD, you may want to select the **Other Protected CD type** option.
- Using Data Compression will save hard disk space but will also require a longer build time.
- Enter a description for the Image in the description field.

Optional: If the CD does not have an Auto-run file, you can specify a program to run it when the Image is inserted into a virtual drive.

- Select **Next**. When the Image of the source disk has been created, the disc will eject automatically.
- Replace the source disc with a writable disk and click **OK** to continue.

3.10 The VCD Manager

To launch the VCD Manager, click the **VCD Manager** tab in the upper left-hand corner of the software interface.



The left window will display a directory tree of:

- All CD/DVD drives on your system, physical and virtual
- All VCD cabinets, in which you can organize your virtual CDs

Select a VCD to view its contents in the bottom window. Right click on a VCD to view its properties, password information, to rename a VCD, etc.

Using Virtual Drives in the VCD Manager

You can access your virtual drives in the left window of the VCD Manager. Right click on a Virtual Drive icon to view the following options:

- **Eject All:** From the top-level **Virtual Drives** icon, you can eject all VCDs from all your virtual drives.
- **Eject:** Eject an inserted VCD from the selected virtual drive.
- **Browse:** View the contents of an inserted VCD.
- **Auto-run:** Play an inserted VCD automatically from the selected virtual drive.
- **Edit Drive:** Change the drive letter of the selected virtual drive.



Using Physical Drives in the VCD Manager

You can access your physical CD/DVD-ROM drives in the left window of the VCD Manager. Right-clicking on a CD/DVD-ROM drive will present you with the following options.

- **Eject All:** From the top-level **Other Drives** icon, you can eject all physical discs from all your CD/DVD-ROM drives.
- **Eject:** Eject a CD or DVD from a select CD/DVD-ROM drive.
- **Close:** Close a select CD/DVD-ROM drive.
- **Auto-run:** Play an inserted CD or DVD automatically from the selected CD/DVD-ROM drive.
- **Edit Drive:** Change the drive letter of a select CD/DVD-ROM drive.
- **Build:** Enter the Create Virtual CD interface.

Adding VCDs to the VCD Manager

Before you play a VCD, you must first add it to the VCD Manager.

1. Click the **Add VCD** button  to import a VCD from your hard drive, another computer, or from a local network; or
2. Right click in the upper right window of the VCD Manager. Select **Add** to open the **Add VCD** dialog box and browse for an image; or
3. Click the **Internet VCD** button  to open the **Add Internet VCD** dialog box. Type in or paste in the URL of the image. You must first make sure the VCD is a shared file.

Organizing VCDs in Cabinets

A cabinet is similar to a folder in Windows Explorer and stores multiple images by category. As your library grows, organizing your images in cabinets will reduce the time it takes to locate your VCDs.

VirtualDrive Pro creates several default cabinets: **Music**, **Games**, **Software**, **Photos**, **Movies**, and **Most Recently Used**.

To add a new cabinet category:

- Select any cabinet icon in the left window of the VCD Manager. At the bottom of the left window, click **Add** to create a new cabinet. Enter a name for your new cabinet.


Or:

- Right click on any cabinet icon in the left window of the VCD Manager and select **New Cabinet** to open the New Cabinet window.

You cannot create a new cabinet within a sub-cabinet. To add a VCD to a cabinet, please refer to the methods described in the preceding section.

You can delete a cabinet by right clicking on it and selecting **Delete**, or selecting a cabinet and clicking the delete button at the bottom of the left window. Deleting a cabinet will remove all image icons and sub-cabinets. It will not delete VCD files from their physical locations

Searching for VCDs

1. Click the **Search** button to open the **Search VCD** dialog box.
2. In the **Path** field, specify a drive to search. To select a custom path, click the **Browse** button  and click **Search**.
3. Located files will be displayed in the right bottom window.

Extracting Files from a VCD

In the VCD Manager, click on a VCD icon to view its contents in the bottom right window. In the bottom right window, right click on the file you wish to extract.

Inserting a VCD into a Virtual Drive

In the VCD Manager:

1. Select a VCD icon in the upper right window and drag it to an available virtual drive; or
2. Double click a VCD icon in the upper right window. This will insert your VCD into the default virtual drive, or the first available virtual drive; or
3. Select a VCD icon in the upper right window and click the **Insert** button; or
4. Open Windows Explorer, right click on a virtual drive, and choose **Insert** from the popup menu.
5. Open the VCD Manager, right click on a virtual CD, and select **Shortcut** to create a desktop shortcut. Double-click the desktop shortcut to insert the virtual CD into the first Virtual Drive listed.

Ejecting a VCD from a Virtual Drive

In the VCD Manager:

1. Click the **Eject** button on the menu bar. From the dropdown menu, select the VCD you wish to eject; or
2. In the left window, right click on a loaded virtual drive and select **Eject**; or
3. Open Windows Explorer, right click on a loaded virtual drive and select **Eject** from the popup menu.

Importing and Exporting a VCD List

To export a VCD list:

1. From the menu bar, select **File → Export VCD List**.
2. Select a location to save the VCD list and enter a name for it. Click **Save**.

Importing a VCD List

1. From the top menu bar, select **File → Import VCD List**.
2. Browse to select any saved VCD list you wish to import. Click **Open**.

3.11 Enabling and Disabling Physical Drives

You may need to disable your physical drives to play certain games as VCDs.

1. Select **Tool** from VCD Manager menu bar
2. Click **Disable IDE CD/DVD ROMs** to disengage your physical drive
3. Click **Enable IDE CD/DVD ROMs** when you wish to re-engage your physical drive

3.12 Converting VCDs and ISO 9660 Images

You can convert an ISO 9660 image file into a VCD file, or conversely convert a VCD file into an ISO 9660 CD file.

1. From the top menu bar, select **Tools → Convert VCD/ISO**.
2. Click **Browse** to locate the ISO or VCD file.
3. Select the VCD or ISO 9660 image you would like to convert and click **OK**.
4. Click **Convert** to start the conversion process.



Note

Audio, DVD, and compressed VCD files cannot be converted into ISO files.

Chapter 4: Command Line Support

4.1 Running VCDs with Command Line Syntax

Command line syntax is a powerful way of automating repetitious tasks in VirtualDrive Pro.

The basic syntax is as follows:

Each command starts with the term "VDrive." A virtual drive can be referenced by its drive letter (e.g., E:, F:, G:) or by a number corresponding to the position of the virtual drive. For example, if drives E, F and G are virtual drives, then drive F can be referred to as "2." Once a virtual drive is referenced, you can then issue a command telling VirtualDrive Pro what to do next.

Available commands are:

1. Vdrive <drive letter:> <VCDfilename> /I [@cmd] [/M] [/NA] => **Insert VCD**
2. Vdrive <drive letter:> /E [/M] => **Eject VCD.**
If successful, returns 0, otherwise 1
3. VDrive /drive: **Returns the number of virtual drives available**
4. /I **Insert a VCD**
5. /E **Eject a VCD**
6. [/M] **Show message**
7. [@<path><filename>] **Run a program on the VCD.** To use this, you must include the full path showing the location of the program to be run and the name of the executable file.

Note: Commands shown in square brackets [] are optional.

4.2 Creating Shortcuts to Run VCDs

You can use command line instructions to create custom shortcuts to your VCDs.

1. Write down what you want the shortcut to do, e.g. Vdrive •E:• "C:\VCDCollection\Age of Kings"• /I •@E:\Age.exe

Note: • The dot shows where a blank space must be inserted.

The above example, read from left to right, works as follows:

Vdrive -- Tells Windows that the following commands will be executed by the Vdrive program.

E: -- selects virtual drive E:

"C:\VCDCollection\Age of Kings" -- Adds the path and the name of the VCD to load.

Note: Any spaces in the character string must be replaced by quotation marks.

/I -- Tells Vdrive to insert the VCD

@ -- Tells Vdrive to execute a program

E:\Age.exe -- Tells Vdrive where the program is by specifying the drive (E :) and the name of

the file to run (Age.exe).

2. Create a shortcut by right-clicking on an empty space on the Windows desktop and selecting **New → Shortcut**.
3. In the "Create Shortcut" window, enter the command line from Step 1.

Example: Vdrive E: "C:\VCDCollection\Age of Kings" /I @E:\Age.exe

Chapter 5: Virtual Hard Drive Pro

5.1 Creating a RAM Disk

Virtual Hard Drive Pro creates a RAM disk, or “virtual hard drive,” that runs in your computer’s physical memory. This RAM disk has read and write times more than 300 times faster than your physical hard drive. It creates no wear and tear on your computer’s mechanical parts. In VirtualDrive Pro 12.0, the included Virtual Hard Drive component lets you make a RAM disk that is limited only by the amount of physical memory on your system.

Please note that to run games and disk-based applications in your RAM disk, you must first install the program to that RAM disk. In this respect, you must treat your virtual hard drive exactly as you would treat a physical hard drive.

1. In the Main Console, select **Virtual Hard Drive Pro → Create a RAM Disk**.



Note

If a RAM Disk is already running in your system, you can not create a new Virtual Hard Drive. The functions of Create a Ram Disk and Load a Ram Disk image file will be disabled.

2. Select the following three parameters for your RAM disk (explained below). Click **Next**.

File system: Virtual Hard Drive Pro supports FAT, FAT32, and NTFS file systems. You must select one of these systems for your RAM disk

The file system is an operating system’s structure for naming, storing, and organizing files. The size of your RAM disk will dictate which file system you are able to use:

File System	RAM Disk Size	
	Minimum	Maximum
FAT	1 MB	2048 MB
FAT32	33 MB	4 GB
NTFS	3 MB	Maximum memory size supported by operating system

Drive letter: Assign a drive letter for your RAM Disk.



Note

Only the drive letters that are not used by other drives, including virtual drives, can be assigned. For example, you can set yours to G: if A:, B:, C:, D:, E: and F: are already being used.

Size: Determine the amount of physical memory you would like to allocate for your RAM disk. Your RAM disk is limited only by the amount of physical memory on your computer system and by the constraints of your operating system.



Note

Some programs might not work properly if there is not enough available memory on your PC. We recommend that you allocate no more than 70% of your physical memory to a RAM disk.

3. Click **Next** to open a dialog box where you can change the default location of your RAM disk and add a description. If you would like Virtual Hard Drive Pro to automatically save your Ram disk as an image, be sure to check the box next to this option.

5.2 Loading an Image as a RAM Disk

You can load a previously created image file on your hard drive as a Ram Disk (Virtual Hard Drive).

1. In the Virtual Hard Drive Pro console, select **Load a RAM Disk image file**.
2. Select the image you want to load and click **Finish**.

5.3 Saving a RAM Disk

Due to the nature of physical memory, the data in the memory-based RAM Disk will be lost when you shut down your computer, unless you save the data as an image.

1. In the Virtual Hard Drive Pro Console, select **Save a RAM Disk**.
2. Click **Save Now**.

5.4 Removing a RAM Disk

If you would like to free up the memory used by your RAM disk or modify the file system, drive letter, and disk space of your RAM disk, you will need to remove the RAM disk in use.

1. In the Virtual Hard Drive Pro Console, select **Remove a RAM Disk**.
2. Click **Delete Now**.

5.5 Exploring a RAM Disk

1. In the Virtual Hard Drive Pro Console, select **Explore a RAM Disk**. You can then explore the contents of the virtual hard drive you created.

Chapter 6: Technical Support and Product Updates

Should you encounter a technical issue with our products, please contact your vendor or use the FarStone online support system at www.farstone.com/support.

Answers to frequently asked questions (FAQs) about FarStone products are posted on the corporate web site at www.farstone.com/support/faqs.

FarStone Technology, Inc.
350 S Hope Ave, Suite A103
Santa Barbara, CA 93105
Phone: 805 682-5678
Email: information@farstone.com

Glossary

CD Emulator: A program that imitates a physical CD-ROM device, creating MP3-like files out of game, application, and data discs.

CD Extra: A multi-session disc containing both music tracks and computer data.

CD-ROM: A disc format that holds text, graphics, and hi-fidelity stereo sound. It uses a different format for recording data than the audio CD (CD-DA) from which it evolved. An audio CD player cannot play CD-ROMs, but CD-ROM players can play audio discs.

CD-Text: The extra information added to a disc, like CD-Text for audio discs. It is stored in the disc subchannel.

Data CD/DVD: A CD/ DVD containing all types of files, including data files and audio files.

ISO 9660: A file system standard for discs which can be read on all operating systems. ISO9660 supports file names in 8.3 format (8 characters for the file name and 3 characters for the file extension).

Mixed-Mode CD: A single-session CD containing both computer data and music tracks. It is typically used for entertainment and educational programs.

Multi-session CD: A CD containing several sessions with a 30MB space between two successive sessions. Each session has a table of contents linking to the next free area of the disc until the final track is closed. If a CD-R/CD-RW disc is left unclosed, you can append data to it.

RAM Disk: A hard drive emulation device that functions like a physical hard drive but runs in a computer's memory, allowing it to access information much faster than a mechanical hard drive.

Virtual CD/DVD: An image file created from the digital contents of a physical CD or DVD. A virtual CD runs directly on a computer's hard drive, but must be inserted into a virtual drive created by your CD emulation software.

Virtual Drive: A CD emulation device that emulates the functionality of a CD/DVD-ROM drive, and appears as a drive letter in Windows Explorer.